

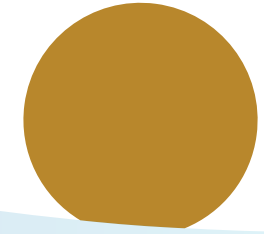


☎ 022 6232 8450



The project has been registered via MahaRERA registration number- P51700056121, P51700033799, P51700046298 & is available on the website <https://maharera.mahaonline.gov.in>
Site address: Runwal Lands End, Opp Kia Service Center, Kolshet, Thane West, Maharashtra 400607.

RUNWAL LANDS END KOLSHET, THANE



Disclaimer: The images and other details herein are only indicative. The Promoter reserves the right to change any or all of these in the interest of the development, as per provision of law. Artist's impressions are used to illustrate amenities, specifications, images, and other details. Tolerance of +/- 3% is possible in the unit areas on account of design and construction variances. All brands stated are subject to final decision of the project architect. This electronic / printed material does not constitute an offer and/or contract of any type between the Promoter and the recipient. No booking or allotment shall be deemed to have been made on the basis of this electronic / printed material. Any Purchaser / Lessee of this development shall be governed by the terms and conditions of the agreement for sale / lease entered into between the parties, and no details mentioned in this electronic / printed material shall in any way govern such transactions unless as may be otherwise expressly provided in the agreement for sale/lease by the Promoter. The Promoter does not warrant or assume any liability or responsibility for the accuracy or completeness of any information contained herein. This electronic / printed material has been created keeping in mind the provisions of the Real Estate (Regulation and Development) Act, 2016 (RERA) applicable for projects in Maharashtra. You are required to verify all the details, including area, amenities, services, terms of sales and payments and other relevant terms independently with the Promoter's sales team only, by physically visiting the project site and the authorized website of RERA. You are requested NOT to visit any unauthorized or unverified website/broker (online / offline) to receive any information about any projects of the Promoter and/or its sister concerns. *Terms & Conditions Apply.



WHERE LAND, WATER AND SKY UNITE,
AND LIFE MEETS ITS FINEST EXPERIENCES.



WHERE LAND ENDS.
AND LIFE BEGINS.



REPRESENTATIONAL IMAGE

KOLSHET:

A GROWTH STORY.

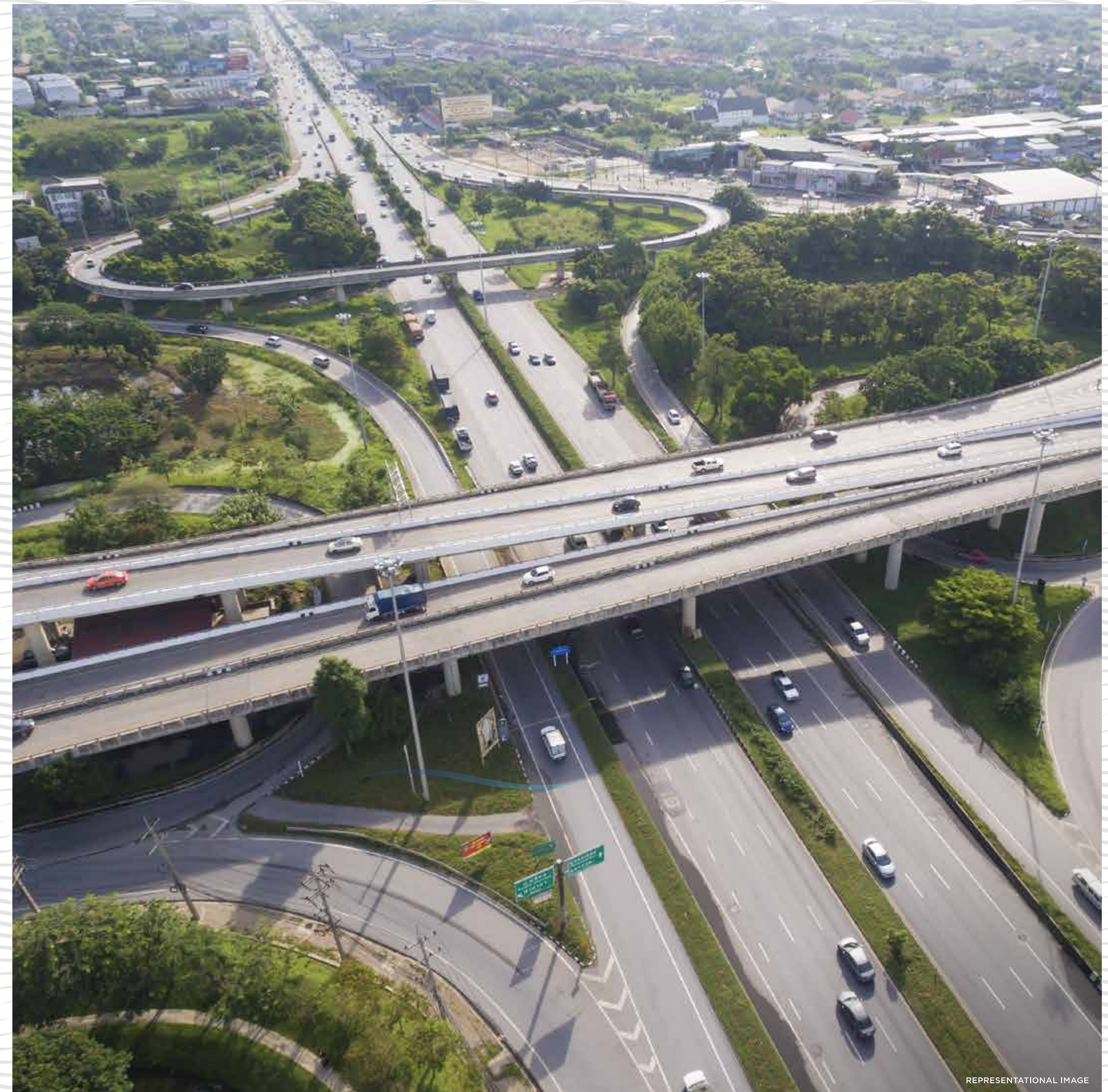

Discover abundant social amenities and thriving commercial hubs, ensuring vibrant community life and endless opportunities. With ample business prospects, Kolshet emerges as the ideal residential destination, offering connectivity to Mumbai, Bhiwandi, and the bustling western suburbs, including Borivali and Mira Bhayander. Join a community of over 8 million+ residents and find your perfect home sweet home.

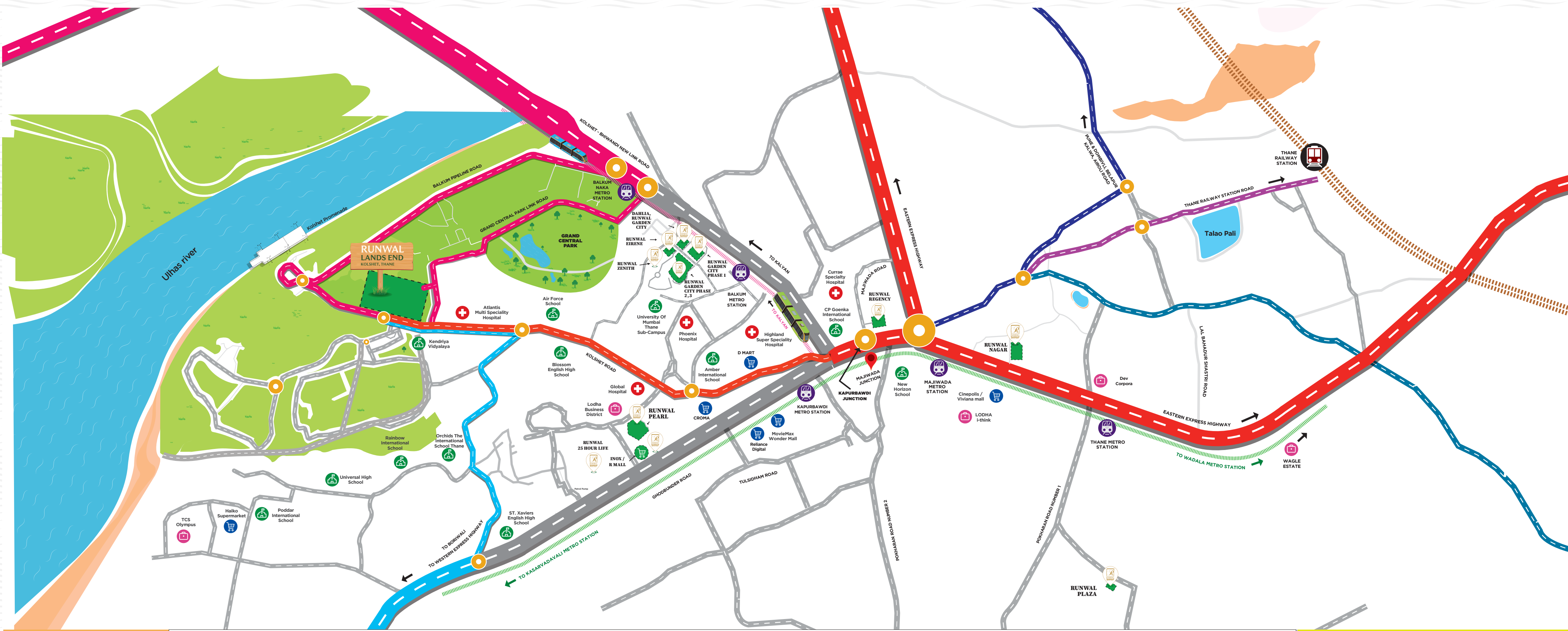




JUST THE LAND
ALONE BRINGS
YOU UNLIMITED LIFE
CHOICES.

Life is more than just a daily routine. To live our lives to the fullest we need more than just connectivity. All essential infrastructure like schools, hospitals, dining, entertainment, and retail options are vital. Thane has experienced significant growth in these areas, boasting top-notch malls, schools, and medical facilities endorsed by MMRDA. With all this it also offers a vibrant cultural scene, recreational parks, green spaces, and community events, enriching the overall quality of life for residents.





RUNWAL PROJECTS IN THANE

- DELIVERED PROJECTS**
- RUNWAL GARDEN CITY PHASE 1
 - RUNWAL GARDEN CITY PHASE 2
 - RUNWAL GARDEN CITY PHASE 3
 - RUNWAL ESTATE PHASE 1
 - DAHLIA, RUNWAL GARDEN CITY
 - RUNWAL REGENCY
 - RUNWAL NAGAR
 - RUNWAL PLAZA
 - RUNWAL PEARL
 - RUNWAL ESTATE PHASE 2
 - R MALL

- ONGOING PROJECTS**
- RUNWAL 25 HOUR LIFE
 - RUNWAL ZENITH
 - RUNWAL EIRENE

- HOSPITAL**
- ATLANTIS MULTI SPECIALITY HOSPITAL
 - GLOBAL HOSPITAL
 - PHOENIX HOSPITAL
 - HIGHLAND SUPER SPECIALITY HOSPITAL
 - CURRAE SPECIALTY HOSPITAL

- SCHOOLS**
- AIR FORCE SCHOOL
 - BLOSSOM ENGLISH HIGH SCHOOL
 - UNIVERSAL HIGH SCHOOL
 - AMBER INTERNATIONAL SCHOOL
 - ORCHIDS THE INTERNATIONAL SCHOOL
 - NEW HORIZON SCHOOL
 - CP GOENKA INTERNATIONAL SCHOOL
 - PODDAR INTERNATIONAL SCHOOL
 - RAINBOW INTERNATIONAL SCHOOL
 - ST. XAVIERS ENGLISH HIGH SCHOOL
 - KENDRIYA VIDYALAYA
 - UNIVERSITY OF MUMBAI

- BUSINESS PARKS**
- LODHA BUSINESS DISTRICT
 - TCS OLYMPUS
 - DELOITTE I-THINK LODHA
 - GODREJ ASCEND
 - DEV CORPORA
 - LODHA I-THINK
 - WAGLE ESTATE

- MARKETS**
- HAIKO SUPERMARKET
 - INOX / R MALL
 - MOVIE MAX WONDER MALL
 - D MART
 - CROMA
 - RELIANCE DIGITAL
 - CINEPOLIS / VIVIANA MALL
 - KORUM MALL

METRO LINE 4
(UPCOMING)
WADALA TO KASARVADEVALI
CLOSEST STATION : KAPURBAWDI
2KM - 7MIN

METRO LINE 5
(UPCOMING)
THANE - BHIWANDI - KALYAN
CLOSEST STATION : KAPURBAWDI
2KM - 7MIN

CONNECTIVITY

- TO BHIWANDI & KALYAN
- FROM DEVASHAREE PARK BACK SIDE OF LODHA/KALPATARU WHICH OPEN TO DOSTI WEST COUNTY WHICH ENSURES CONNECTIVITY INTO BHIWANDI
- BALKUM PIPELINE ROAD IS ALSO ACTIVATED WHICH HAS ACCESS TO BHIWANDI
- TO WESTERN EXPRESS WAY AND BORIVALI
- RIGHT FROM LODHA STERLING GHODBUNDER ROAD WHICH CONNECTS FURTHER TO BORIVALI
- TO EASTERN EXPRESS WAY KALYAN AND THANE
- KOLSHEET ROAD, CONNECTIVITY TO KAPURBAWDI

LAND WATER SKY HOMES WITH BEST CONNECTIVITY

With Thane's immense infrastructural development in place, Kolshet is set to become one of the most well connected location.



MUMBAI METRO
LINE 4



A fully elevated 30 station metro line starting from Wadala to Kasarvadavli - Thane covering Ghatkopar, Mulund and other major points will make every day travel comforting and secure.

MUMBAI METRO
LINE 5



Connecting Thane-Bhiwandi-Kalyan altogether this metro line will be the smartest way to travel from northern parts of Thane.

BORIVALI - THANE
TUNNEL



Connecting Drastically cutting down the Thane-Borivali distance to just 15 mins, this twin tunnel will be the easiest and most affordable way to commute in future.

KOLSHET -
SOUTH MUMBAI - VASAI
WATERWAY



Thane-Mumbai and Thane-Vasai will be the first intra-city water service in Mumbai which will connect Kalyan-Thane-Vasai-Mumbai and Navi-Mumbai.

HI-SPEED
THANE ROAD



MMRDA plans a massive 6-lane high speed Thane road cutting down travel time from 1.5 hours to just 10 mins. With 11 Km stretch, this marvellous route will start from Northern most tip of Mulund and end at Gaimukh, Thane.

CENTRAL PARK ROAD
LINKING KOLSHET
& BHIWANDI



A proposed link road project between Kolshet and Bhiwandi Naka through Grand Central Park road will let you cover 17 kms in just 10 mins.

UNDERGROUND
RAILWAY LINE CONNECTING
CST-THANE



A 34 km underground corridor is in process which will connect Thane to CSMT in just 21 mins which is half the current duration taken.

2 NEW BRIDGES OVER
THANE CREEK
SPEEDING UP
MUMBAI-NASHIK TRAVEL



Thane creek to get 2 new over-bridges to push traffic from Mumbai to Nashik & Gujarat with ease. With the length of 2-4 km each, these links will connect Bhiwandi-Paygaon and Kharbao with Gaimukh and Kasarwadavli in no time.

All image are for representational purposes only.

Disclaimer: Road and infrastrucre facilities to be provided by appropriate authorities.



A HOME WHERE NATURE IS
YOUR CLOSEST NEIGHBOUR.



ARTIST'S IMPRESSION

10 ACRES OF
LAND.
INNUMERABLE SHADES OF
GREEN. AND EVEN MORE
WAYS TO UNWIND.

Immerse yourself in a lifestyle that beckons you to unwind amidst nature's unaltered hideaway.

- ◆ Surrounded by approx. 1600 acres of lush greenery.
- ◆ Homes that have a 270° view of never-ending enchanting green vistas
- ◆ Hundreds of trees added to the lush green surrounding.
- ◆ Around 1 lac sq. ft., vehicle-free podium area.
- ◆ Low density project with just 7 towers spread across 10 acres..

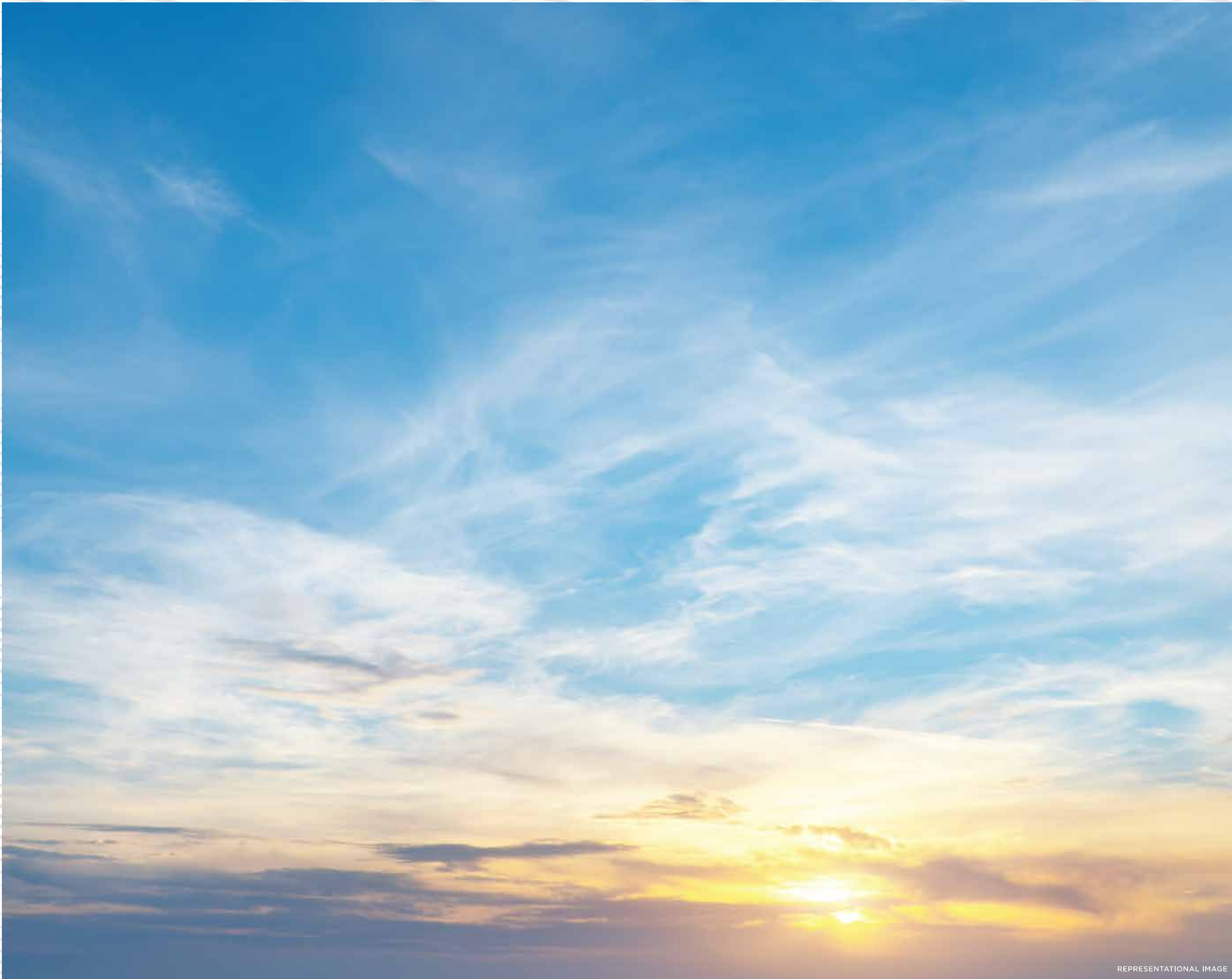




CALM
WATER.
TAKE A BREAK FROM YOUR
DAILY HUSTLE BUSTLE.

Water not only revitalizes the body but also rejuvenates the soul. Imagine residing by the Ulhas River, where every day offers breathtaking views and the joy of spotting countless bird species.





REPRESENTATIONAL IMAGE



LIMITLESS
SKY,
WHERE THE HORIZON
IS JUST ANOTHER
BEGINNING.

A new day begins with a view of the infinite sky extending as far as the horizon. You are the first to see the sunrise. The sun, moon and stars: your personal pictures on the canvas of the sky. Scenic nature vistas for your viewing pleasure.





NATURE'S MASTERPIECE : A BREATHTAKING LANDSCAPE.

Enrich your day with 75% of open space in the lap of nature. Beautiful gardens and seating spaces designed to flow like water will make your life a joy. Experience counting butterflies, listening to birds, watching sunlight dance on the water, inhaling fresh and natural fragrances amongst your activities. The lush surroundings will make green and blue your favorite colours.





WHEN THE SKY SEEMS TO GO ON FOREVER,
THE AMENITIES UNDER IT SHOULD TOO.



BUILD A HEALTHY LIFESTYLE.

Your home gives you much peace and serenity with some indulging activities to lead a sumptuous & luxuriant lifestyle. On the podium level you will find a resort-style clubhouse, spanning 40,000 sq. ft. (approx.) - one of Kolshet's largest. It's a place where you can entertain & be entertained while enjoying a luxurious lifestyle.

And that's not all though. Apart from the clubhouse, there are amenities designed and spread across 6 acres of nature that you can use whenever you feel like it.





GRAND PODIUM OF AROUND 1 LAKH SQ.FT.

ARTIST'S IMPRESSION



BEACH POOL

ARTIST'S IMPRESSION



PUTTING GREENS

REPRESENTATIONAL IMAGE



BADMINTON

REPRESENTATIONAL IMAGE



EXPERIENCE VACATION, FOR LIFE.

Enjoy vacation-like amenities such as an Aromatic Garden, a Beach Pool or even a Sand Castle for the children. We have a long list of such leisures especially curated for you.

- URBAN FARMING
- VIEWING GALLERY
- COCOON SEATING/PICNIC CORN
- FRUIT ORCHARD
- AROMATIC GROVE
- PUTTING GOLF
- CELEBRATION PLAZA
- SELFIE POINT

- SAND PIT
- LILY POND
- REFLEXOLOGY PATH
- RIVER GAZING DECK
- SAND BEACH



ARTIST'S IMPRESSION





ARTIST'S IMPRESSION

LAND, SKY AND WATER: ESSENTIAL INGREDIENTS FOR HEALTHY LIVING.

We've added to the land, sky and water, privileges that will allow you to destress the mind, body and soul. These are features which take away the pressure of day-to-day living and allow for wellness to become a way of life.

- PLANTATION AREA
- MEDITATION CIRCLE
- YOGA ZONE
- HERB GARDEN
- FLOWER TUNNEL CIRCLE
- TREE LINE AVENUE PARK
- REFLECTING WATER BODY
- SENIOR CITIZEN'S CORNER
- ZEN GARDEN
- CHESS
- JOGGING/CYCLING TRACK





YOGA ZONE

REPRESENTATIONAL IMAGE



HERB GARDEN

REPRESENTATIONAL IMAGE



JOGGING / CYCLING TRACK

REPRESENTATIONAL IMAGE



ZEN GARDEN

REPRESENTATIONAL IMAGE

UNWRAP NATURE AT ITS BEST.

Entertainment means different things to different people. A quiet moment. A party with friends. Or just getting into a hobby. That's why we've created a host of features that allow for every individual's unique taste.

BUTTERFLY DOME
TREE HOUSE
YOUTH SIT-OUT
SUNSHINE / SUNRISE GAZEBO
KIDS' PLAY AREA
AMPHITHEATER
DANCE ARENA
CRAFT WALL
BARBEQUE ZONE
BANQUET LAWN
SKATEBOARDING
SIT-OUT





BARBEQUE ZONE

REPRESENTATIONAL IMAGE



SKATEBOARDING

REPRESENTATIONAL IMAGE



AMPHITHEATRE

ARTIST'S IMPRESSION



TREE HOUSE

REPRESENTATIONAL IMAGE



ARTIST'S IMPRESSION

REDEFINE IMAGINATION.

When your sports grounds and courts and tracks are situated amidst the splendours of nature, you are inspired to do a little more. Another 15 mins of cycling. Another five baskets. Or one more set of tennis.

ROCK-CLIMBING WALL

PET TRAIL

JUNGLE ADVENTURE & GYM

FOOTBALL COURT

CRICKET GROUND

SWIMMING POOL

KIDS' POOL

TENNIS COURT

MULTIPURPOSE COURT





TENNIS COURT

REPRESENTATIONAL IMAGE



CRICKET GROUND

ARTIST'S IMPRESSION



SWIMMING POOL

ARTIST'S IMPRESSION



ROCK-CLIMBING WALL

REPRESENTATIONAL IMAGE

THE INSIDE IS AS GRAND AS THE NATURE OUTSIDE.

When the outside is so beautiful and luxurious, could your home be left behind? The spacious and efficiently designed residences at Runwal Land's End are constructed with the finest materials and fittings available to let you enjoy the life of luxury you so truly deserve. The sublime thought of this elevated lifestyle is also supported by the fact that the first residential floor is the 9th in every tower.

LIVING, DINING, BEDROOM & LOBBY AREA

- Solid core flush door with laminate on both sides for main door and bedroom doors.
- Acrylic emulsion on walls and ceilings.
- Wall finish in gypsum plaster.

FLOORING

- Vitrified tiles in living area, dining area, bedrooms, and kitchen.
- Vitrified tiles in passage and balcony.
- Neat cement finish on staircase.
- Large balconies designed to let in natural light & ventilation.

KITCHEN

- Dado tiling 600 mm above the counter, 2nd quality tiles below counter.
- Granite counter with single bowl sink.
- CP/ sanitary fittings of Jaquar / equivalent.

BATHROOMS

- Vitrified tiles for walls and floors.
- 6 mm PVC false ceilings.
- CP / sanitary fittings of Jaquar / equivalent.





RESORT LIVING REDEFINED:
≈10-ACRE PARADISE AWAITS

MASTER LAYOUT PLAN



AMENITIES

GROUND FLOOR

1. PLANTATION AREA
2. GARDEN LOUNGE
3. ROCK CLIMBING WALL
4. VIEWING GALLERY
5. MEDITATION CIRCLE
6. COCOON SEATING
7. YOGA ZONE.
8. PET TRAIL.
9. HERB GARDEN
10. BUTTERFLY DOME
11. FRUIT ORCHARD
12. JUNGLE ADEVENTURE & GYM
13. TREE HOUSE
14. FLOWER TUNNEL CIRCLE
15. AROMATIC GROVE
16. PUTTING GOLF
17. TREE LINE AVENUE WALK
18. CELEBRATION PLAZA
19. REFLECTING WATER BODY
20. FOOTBALL COURT
21. BANQUET LAWN
22. TOWER DROP OFF AT GROUND LEVEL
23. CYCLING ZONE
24. JOGGING

PODIUM LEVEL

25. SITOUT AREAS.
26. SUNSHINE/SUNRISE GAZEBO
27. SELFIE POINT
28. KID'S PLAY AREA
29. SAND PIT
30. LILY POND
31. AMPHITHEATER
32. DANCE ARENA
33. CRICKET GROUND
34. REFLEXOLOGY PATH
35. SENIOR CITIZEN'S CORNER
36. CRAFT WALL
37. ZEN GARDEN
38. CHESS
39. RIVER GAZING DECK
40. BARBEQUE ZONE
41. SAND BEACH
42. SWIMMING POOL
43. KID'S POOL
44. SKATEBOARDING
45. TENNIS COURT
46. MULTIPURPOSE COURT

TYPICAL FLOOR PLAN





THE PIONEERS OF LUXURY DEVELOPMENTS
NOW INTRODUCES
LAND, WATER, SKY, HOMES.



REPRESENTATIONAL IMAGE



THE NEXUS OF COMMITMENT, QUALITY AND TRUST.

Established in 1968, over four decades Runwal has become a synonym of trust & commitment in the realty world. Quality construction, a commitment to customer happiness and on-time delivery have brought our customers to a point where trust us implicitly to deliver the lifestyles and homes they desire.

45 + YEARS OF LEGACY

50 + PROJECTS DELIVERED

48 K HAPPY FAMILIES

51 + AWARDS AND ACCOLADES





ADORNING THE CITY SKYLINE WITH SERENE VIEWS OF NATURE

The brand Runwal is one of the most trusted developers in Mumbai. It is also a matter of pride, that we have built some of the finest landmarks dotting the city.

We also own and manage the largest retail mall chain in Mumbai with over 2 million sq.ft. of GLA that includes R City-Ghatkopar (W), one of Mumbai's largest malls, R Mall-Mulund, R Mall-Thane and R Odeon-Ghatkopar (E) are among the other retail development in the city.





TURNING DREAMS INTO REALITY

Every Runwal home delivers smiles to the faces of happy and satisfied customers.

ONGOING PROJECTS



RUNWAL 25 HOUR LIFE
THANE



RUNWAL LANDS END
THANE



RUNWAL ZENITH,
THANE



RUNWAL EIRENE,
THANE



RUNWAL SANCTUARY,
MULUND



RUNWAL TIMELESS,
WADALA



RUNWAL RARE,
OFF JUHU CIRCLE ANDHERI (W)



RUNWAL NIRVANA,
PAREL



RUNWAL THE CENTRAL PARK,
PUNE