

WELCOME TO THE
— *place of bliss* —

PRESENTING



NIRVANA
TRANQUIL RESIDENCES
BY RUNWAL



ARTIST'S IMPRESSION

Legacy of 4 Decades.

Established in 1978, Runwal is one of Mumbai's premier real estate developers, operating in the residential, commercial and organized retail vertical. With a robust track record of 51 delivered projects with over 20 thousand happy families, Runwal Group has continuously striven to keep the 'customer' as a focal point for all its projects.

Operating in the Luxury, Premium and Large-Format Township categories in residential development, Runwal today also owns and manages the largest retail mall chain in Mumbai with over 2 million sq ft of GLA that includes RCity, Ghatkopar (W) – which is one of Mumbai's Biggest Mall; R Mall, Mulund; R Mall, Thane and R Odeon, Ghatkopar (E). It currently manages a portfolio of 14 ongoing projects with almost 11 mn sq.ft under development across Mumbai and the MMRDA region. One of the fastest growing entities in the real estate sector, Runwal Group claims to have operated with excellent customer care levels and the highest standards for the welfare of society and the environment since the last 4 decades.



**WE PROMISED. YOU TRUSTED.
WE DELIVERED.**

51+ | Delivered
Projects

30 | Million Sq. Ft.
Delivered

25+ | Thousand
Happy Families

04 | A Four Decade
Legacy

14 | Projects
Under Development

South Mumbai gets a new landmark at Parel.

Top-of-the-line amenities, excellent connectivity,
posh location, and peaceful homes, Nirvana has it all.

At Nirvana, all the amenities come together to provide the residents with a blissful
experience and an extraordinary lifestyle.

P R E S E N T I N G



NIRVANA
TRANQUIL RESIDENCES
BY RUNWAL



NIRVANA

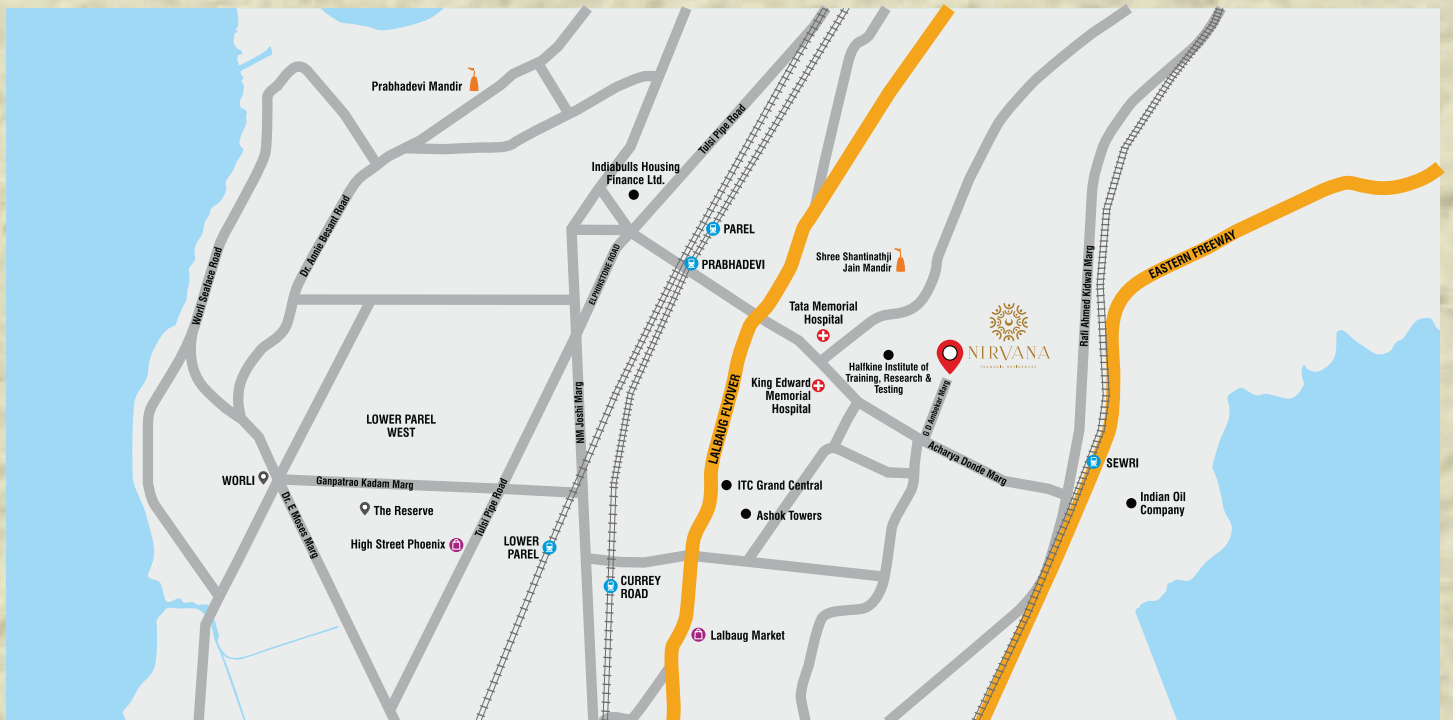
Imagine for a moment, what living amidst tranquility feels like. A serene, enchanting world away from the chaos of city life, yet nestled in the very heart of the city.

Thanks to the proximity to Arabian Sea, just 1.5 kms to the West and 3.7 kms to the East, as well as residences beginning from an elevation of 90 feet, you can enjoy breathtaking views of the glistening sea and the spectacular sunsets that come with it. The blanket of surrounding greenery will forever offer the much-needed respite for your eyes. You can enjoy the stellar night sky from your perch on top or a bird's eye view of the twinkling city lights mirrored down below.



Heart of the city, with great connectivity.

Strategically placed in the heart of Parel, with immediate access to the Eastern Express Highway, you'll end your search for a home at Nirvana.



Map used for representational purpose

Lower Parel: 3.6 kms

Worli: 4.7 kms

Mahalaxmi Race Course: 6.7 kms

Bandra-Kurla Complex: 10.1 kms

Nariman Point: 10.8 kms

Parel Station: 2.7 kms

Eastern Express Highway:
2.5 kms approx.

Eastern Freeway: 7 kms approx.

International Airport: 13.6 kms

Excellent connectivity via (Dadar / Mint Colony)
monorail to Jacob Circle

Hotels



ITC Grand Central - 1.6 kms
The St. Regis - 4.7 kms
Four Seasons - 5.5 kms

Malls



Palladium - 4.8 kms
Atria - 5.6 kms

Hospitals



KEM Hospital - 1.2 kms
Tata Memorial Hospital - 2.6 kms
Global Hospital - 1.4 kms

Commercial Spaces



Kamala Mills Compound - 3.6 kms
Marathon Next Gen - 4 kms
Indiabulls Finance Centre - 2.4 kms
Raghuvanshi Mills - 4.6 kms



Plethora of amenities.

A place that will make you believe that there's more to life than your ordinary day to day sustenance with its state-of-the-art amenities.



Swimming Pool



Yoga Pavilion



Indoor Games



Library



Clubhouse



Grand Entrance Lobby



Steam Room



Party Space



Multipurpose Court



Multistorey Parking



A new lifestyle awaits.

Homes that surpass your expectations and a lifestyle that you were waiting to be upgraded to. Be close to all that you love with your home in the heart of Parel, and delight in the open greens right outside your window.



TOWER FLOOR PLAN



MahaRERA Registration No.: NIRVANA PART 1 : P51900010100

Available at <http://maharera.mahaonline.gov.in>

The images and other details herein are only indicative. The Developer / Owner reserves the right to change any or all of these in the interest of the development, as per provision of law. Artist's impressions are used to illustrate amenities, specifications, images and other details. Tolerance of +/- 3% is possible in the unit areas on account of design and construction variances. All brands stated are subject to final decision of the project architect. This electronic / printed material does not constitute an offer and/or contract of any type between the Developer / Owner and the recipient. No booking or allotment shall be deemed to have been made on the basis of this electronic / printed material. Any Purchaser / Lessee of this development shall be governed by the terms and conditions of the agreement for sale / lease entered into between the parties, and no details mentioned in this electronic / printed material shall in any way govern such transactions unless as may be otherwise expressly provided in the agreement for sale/lease by the Developer / Owner. The Developer / Owner does not warrant or assume any liability or responsibility for the accuracy or

completeness of any information contained herein. Project presently financed by ICICI Bank Ltd. and NOC / permission of ICICI Bank Ltd. will be obtained for sale of property, if required. This electronic / printed material has been created keeping in mind the provisions of the Real Estate (Regulation and Development) Act, 2016 (RERA) applicable for projects in Maharashtra. You are required to verify all the details, including area, amenities, services, terms of sales and payments and other relevant terms independently with the Developer sales team only, by physically visiting the project site and the authorised website of RERA. You are requested NOT to visit any unauthorized or unverified website/broker (online / offline) to receive any information about any projects of the Developer and/or its sister concerns

2BHK (B)



MahaRERA Registration No.: NIRVANA PART 1 : P51900010100 Available at <http://maharera.mahaonline.gov.in>



The images and other details herein are only indicative. The Developer / Owner reserves the right to change any or all of these in the interest of the development, as per provision of law. Artist's impressions are used to illustrate amenities, specifications, images and other details. Tolerance of +/- 3% is possible in the unit areas on account of design and construction variances. All brands stated are subject to final decision of the project architect. This electronic / printed material does not constitute an offer and/or contract of any type between the Developer / Owner and the recipient. No booking or allotment shall be deemed to have been made on the basis of this electronic / printed material. Any Purchaser / Lessee of this development shall be governed by the terms and conditions of the agreement for sale / lease entered into between the parties, and no details mentioned in this electronic / printed material shall in any way govern such transactions unless as may be otherwise expressly provided in the agreement for sale/lease by the Developer / Owner. The Developer / Owner does not warrant or assume any liability or responsibility for the accuracy or completeness of any information contained herein. Project presently financed by ICICI Bank Ltd. and NOC / permission of ICICI Bank Ltd. will be obtained for sale of property, if required. This electronic / printed material has been created keeping in mind the provisions of the Real Estate (Regulation and Development) Act, 2016 (RERA) applicable for projects in Maharashtra. You are required to verify all the details, including area, amenities, services, terms of sales and payments and other relevant terms independently with the Developer sales team only, by physically visiting the project site and the authorised website of RERA. You are requested NOT to visit any unauthorized or unverified website/broker (online / offline) to receive any information about any projects of the Developer and/or its sister concerns

2BHK (C)

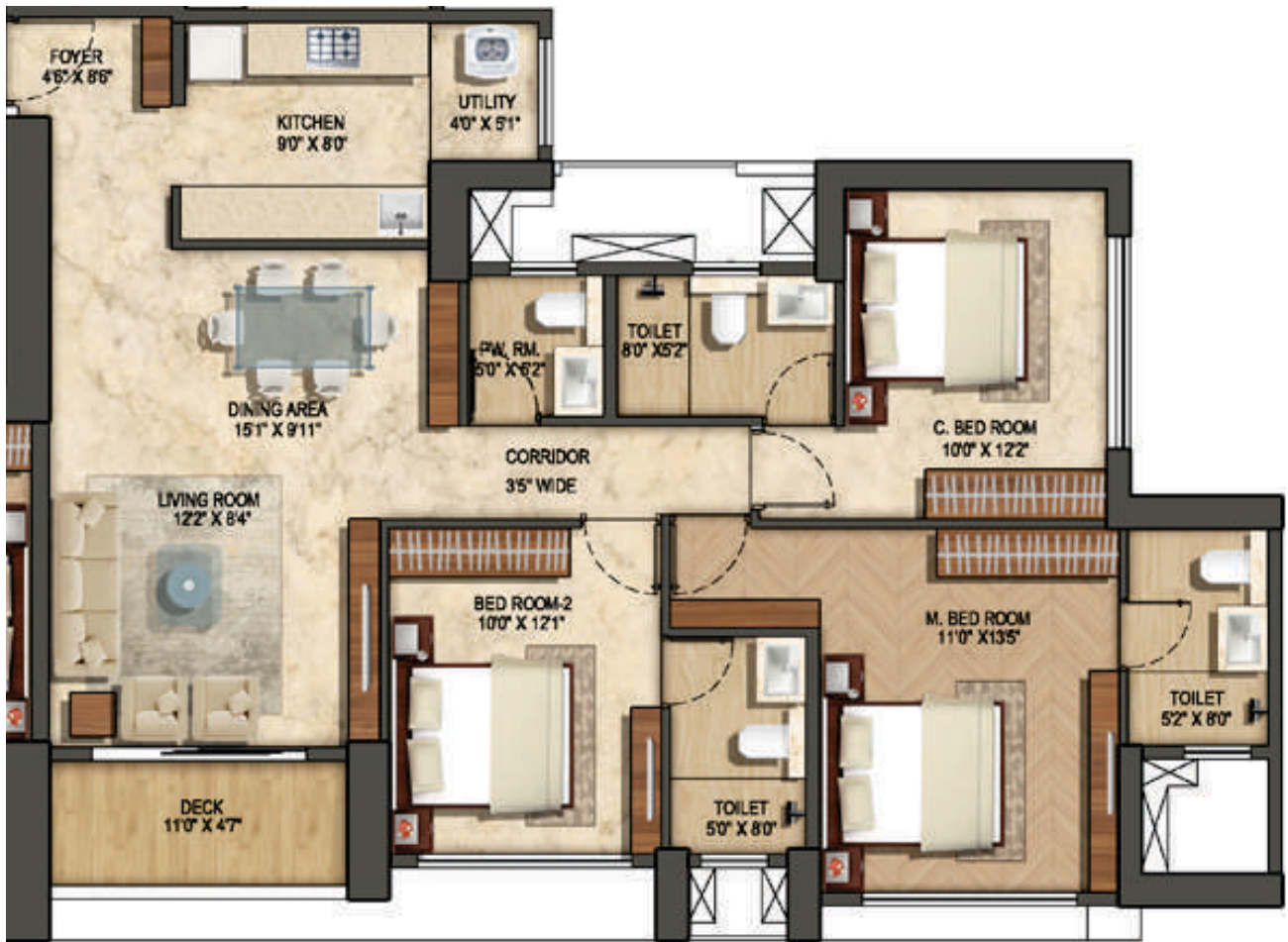


MahaRERA Registration No.: NIRVANA PART 1 : P51900010100 Available at <http://maharera.mahaonline.gov.in>



The images and other details herein are only indicative. The Developer / Owner reserves the right to change any or all of these in the interest of the development, as per provision of law. Artist's impressions are used to illustrate amenities, specifications, images and other details. Tolerance of +/- 3% is possible in the unit areas on account of design and construction variances. All brands stated are subject to final decision of the project architect. This electronic / printed material does not constitute an offer and/or contract of any type between the Developer / Owner and the recipient. No booking or allotment shall be deemed to have been made on the basis of this electronic / printed material. Any Purchaser / Lessee of this development shall be governed by the terms and conditions of the agreement for sale / lease entered into between the parties, and no details mentioned in this electronic / printed material shall in any way govern such transactions unless as may be otherwise expressly provided in the agreement for sale/lease by the Developer / Owner. The Developer / Owner does not warrant or assume any liability or responsibility for the accuracy or completeness of any information contained herein. Project presently financed by ICICI Bank Ltd. and NOC / permission of ICICI Bank Ltd. will be obtained for sale of property, if required. This electronic / printed material has been created keeping in mind the provisions of the Real Estate (Regulation and Development) Act, 2016 (RERA) applicable for projects in Maharashtra. You are required to verify all the details, including area, amenities, services, terms of sales and payments and other relevant terms independently with the Developer sales team only, by physically visiting the project site and the authorised website of RERA. You are requested NOT to visit any unauthorized or unverified website/broker (online / offline) to receive any information about any projects of the Developer and/or its sister concerns

3BHK (A)



MahaRERA Registration No.: NIRVANA PART 1 : P51900010100 Available at <http://maharera.mahaonline.gov.in>



The images and other details herein are only indicative. The Developer / Owner reserves the right to change any or all of these in the interest of the development, as per provision of law. Artist's impressions are used to illustrate amenities, specifications, images and other details. Tolerance of +/- 3% is possible in the unit areas on account of design and construction variances. All brands stated are subject to final decision of the project architect. This electronic / printed material does not constitute an offer and/or contract of any type between the Developer / Owner and the recipient. No booking or allotment shall be deemed to have been made on the basis of this electronic / printed material. Any Purchaser / Lessee of this development shall be governed by the terms and conditions of the agreement for sale / lease entered into between the parties, and no details mentioned in this electronic / printed material shall in any way govern such transactions unless as may be otherwise expressly provided in the agreement for sale/lease by the Developer / Owner. The Developer / Owner does not warrant or assume any liability or responsibility for the accuracy or completeness of any information contained herein. Project presently financed by ICICI Bank Ltd. and NOC / permission of ICICI Bank Ltd. will be obtained for sale of property, if required. This electronic / printed material has been created keeping in mind the provisions of the Real Estate (Regulation and Development) Act, 2016 (RERA) applicable for projects in Maharashtra. You are required to verify all the details, including area, amenities, services, terms of sales and payments and other relevant terms independently with the Developer sales team only, by physically visiting the project site and the authorised website of RERA. You are requested NOT to visit any unauthorized or unverified website/broker (online / offline) to receive any information about any projects of the Developer and/or its sister concerns

3BHK (B)



MahaRERA Registration No.: NIRVANA PART 1 : P51900010100 Available at <http://maharera.mahaonline.gov.in>



The images and other details herein are only indicative. The Developer / Owner reserves the right to change any or all of these in the interest of the development, as per provision of law. Artist's impressions are used to illustrate amenities, specifications, images and other details. Tolerance of +/- 3% is possible in the unit areas on account of design and construction variances. All brands stated are subject to final decision of the project architect. This electronic / printed material does not constitute an offer and/or contract of any type between the Developer / Owner and the recipient. No booking or allotment shall be deemed to have been made on the basis of this electronic / printed material. Any Purchaser / Lessee of this development shall be governed by the terms and conditions of the agreement for sale / lease entered into between the parties, and no details mentioned in this electronic / printed material shall in any way govern such transactions unless as may be otherwise expressly provided in the agreement for sale/lease by the Developer / Owner. The Developer / Owner does not warrant or assume any liability or responsibility for the accuracy or completeness of any information contained herein. Project presently financed by ICICI Bank Ltd. and NOC / permission of ICICI Bank Ltd. will be obtained for sale of property, if required. This electronic / printed material has been created keeping in mind the provisions of the Real Estate (Regulation and Development) Act, 2016 (RERA) applicable for projects in Maharashtra. You are required to verify all the details, including area, amenities, services, terms of sales and payments and other relevant terms independently with the Developer sales team only, by physically visiting the project site and the authorised website of RERA. You are requested NOT to visit any unauthorized or unverified website/broker (online / offline) to receive any information about any projects of the Developer and/or its sister concerns

*A joint venture between Runwal Developers Pvt. Ltd.
& Accord Estates Pvt. Ltd.*



☎ 022 6281 0373

Site: 6, GD Ambekar Road, Bhoiwada, Parel, Mumbai - 400012.

**At Project Nirvana | MahaRERA Registration No.: NIRVANA PART 1 : P51900010100. Available at <http://maharera.mahaonline.gov.in>*

The images and other details herein are only indicative. The Developer / Owner reserves the right to change any or all of these in the interest of the development, as per provision of law. Artist's impressions are used to illustrate amenities, specifications, images and other details. Tolerance of +/- 3% is possible in the unit areas on account of design and construction variances. All brands stated are subject to final decision of the project architect. This electronic / printed material does not constitute an offer and/or contract of any type between the Developer / Owner and the recipient. No booking or allotment shall be deemed to have been made on the basis of this electronic / printed material. Any Purchaser / Lessee of this development shall be governed by the terms and conditions of the agreement for sale / lease entered into between the parties, and no details mentioned in this electronic / printed material shall in any way govern such transactions unless as may be otherwise expressly provided in the agreement for sale/lease by the Developer / Owner. The Developer / Owner does not warrant or assume any liability or responsibility for the accuracy or completeness of any information contained herein. Project presently financed by ICICI Bank Ltd. and NOC / permission of ICICI Bank Ltd. will be obtained for sale of property, if required. This electronic / printed material has been created keeping in mind the provisions of the Real Estate (Regulation and Development) Act, 2016 (RERA) applicable for projects in Maharashtra. You are required to verify all the details, including area, amenities, services, terms of sales and payments and other relevant terms independently with the Developer's sales team only, by physically visiting the project site and the authorised website of RERA. You are requested NOT to visit any unauthorized or unverified website/broker (online / offline) to receive any information about any projects of the Developer and/or its sister concerns.