

www.runwal.com



www.runwal.com



# RUNWAL EIRENE

BALKUM, THANE

SPACIOUS 1 & 2 BED DECK RESIDENCES

☎ 022 62810331



**SITE: OPP. RUNWAL GARDEN CITY, BALKUM, THANE (W)**

Maha RERA No. P51700004574 for Runwal Eirene - Part 1. Available on Website: [www.maharera.mahaonline.gov.in](http://www.maharera.mahaonline.gov.in)

GET  
*Ready*

# RUNWAL EIRENE

BALKUM, THANE

SPACIOUS 1 & 2 BED DECK RESIDENCES

The images and other details of the amenities, specifications, finishes, etc. are only indicative and based on artistic imagination, which may not be exact or accurate, and the same does not form either the basis or part of the offer or contract. The Promoter reserves the right to change any or all of these in the interest of the continuous improvement and development of the Project, as per provisions of law. Tolerance of +/- 3% is possible in the unit areas on account of design and construction variances. All brands stated are subject to the final decision of the Project architect. The Promoter also reserves the right to alter the layout, plans, specifications or features without prior notice or obligation. This electronic / printed material does not constitute an offer and/or contract of any type between the Promoter and the recipient. No booking or allotment shall be deemed to have been made on the basis of this electronic / printed material. Any Purchaser / Lessee of this development shall be governed by the terms and conditions of the agreement for sale / lease entered into between the parties, and no representation, information, details mentioned in this electronic / printed material shall be construed to mean the giving of any warranty, assurance etc. and cannot be enforced against the Promoter. The same shall not in any way govern the transaction of sale of the flat/s unless as may be otherwise expressly provided in the agreement for sale/lease by the Promoter. The Promoter does not warrant or assume any liability or responsibility for the accuracy or completeness of any information contained herein. The Project presently financed by Aditya Birla Finance Limited and Aditya Birla Housing Finance Limited and NOC / permission of Aditya Birla Finance Limited and Aditya Birla Housing Finance Limited will be obtained for sale of property, if required. This electronic / printed material has been created keeping in mind the provisions of the Real Estate (Regulation and Development) Act, 2016 (RERA) applicable for projects in Maharashtra. You are required to verify all the details, including area, amenities, services, terms of sales and payments and other relevant terms independently with the Promoter's sales team only, by physically visiting the project site and the authorized website of RERA. You are requested NOT to visit any unauthorized or unverified website/broker (online / offline) to receive any information about any projects of the Promoter and/or its sister concerns. \*Terms & Conditions Apply.

*You only  
live Once*

BUT IF YOU DO IT RIGHT, ONCE IS ENOUGH.

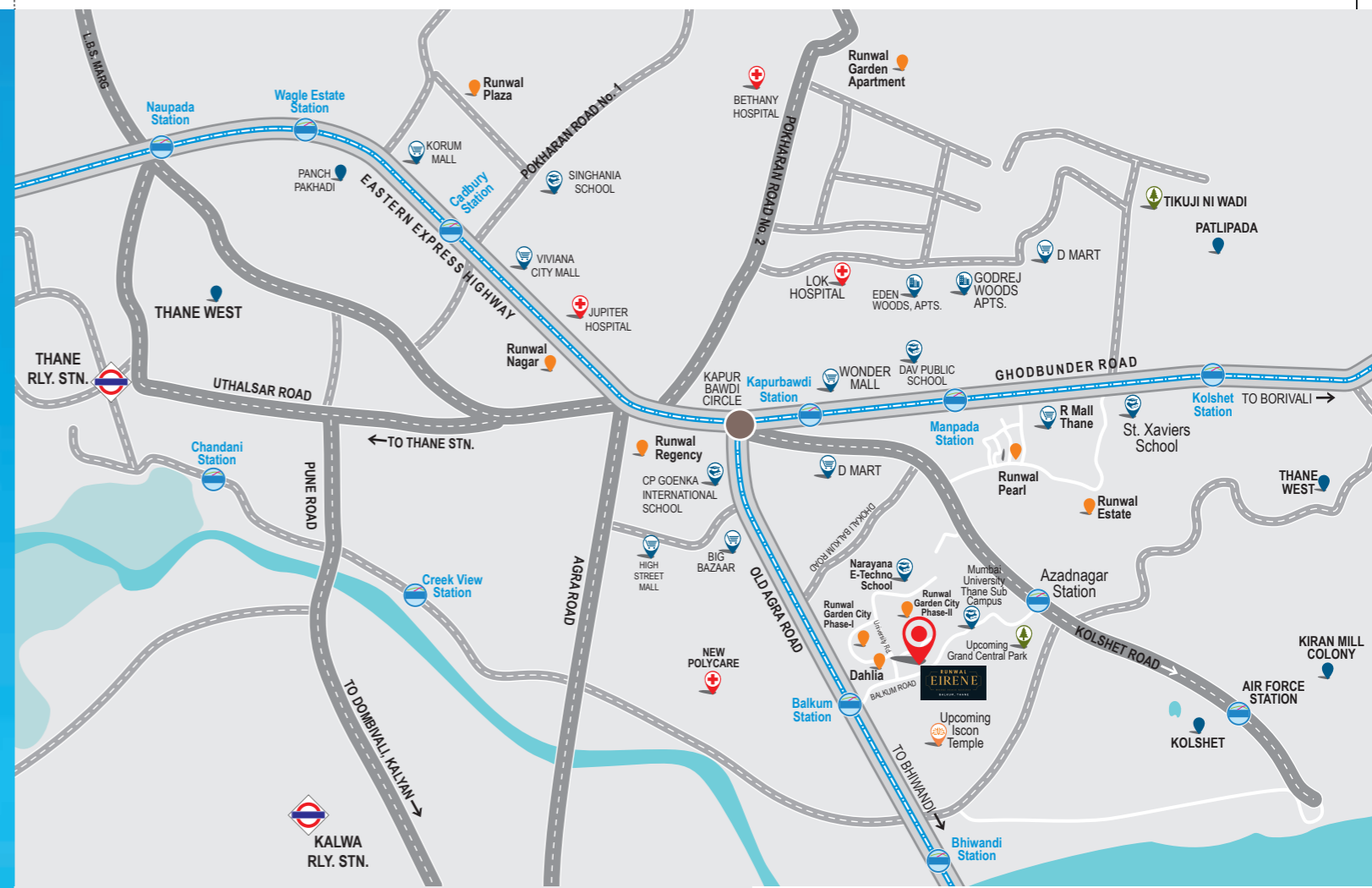


# GET READY FOR AN *Oasis of Peace*

## IN THE HEART OF THANE

Premium. Picturesque. Serene. That's Balkum, the green lungs of Thane for you. It's one of the most promising locations too since it offers an excellent connectivity. So, experience the best of both worlds.

The growing and ever-expanding suburb spreads over the lap of 30 lakes along with the lush green hills that enhance the freshness of a locality that's home to inspiring forts and beautiful churches.



● Projects by Runwal

Above map is for representation purpose only NOT TO SCALE



# Connected

One of the Thane's most picturesque locales, Balkum is on the brink of expansion. The upcoming projects and close connectivity to the major hot-spots makes it a center of all attraction. So when you think about it, Balkum really has the best of both worlds



1 hour away from business hubs of BKC, CBD Belapur, Vikhroli and Powai



45 minutes away from International airport



Proposed 24 km Metro, connecting Thane, Bhiwandi and Kalyan, all set to become the prime locales. Closest metro station Balkum Naka.



Thane station 15 minutes away



Proposed Highway plan linking Balkum, Saket and Nashik.

# RUNWAL EIRENE

WHERE PEACE RESIDES

BALKUM, THANE

GETTING

*Ready to host you!*

What happens when a name that's a paradigm of excellence chooses the most promising location of Thane to create an architectural marvel that offers avant-garde experiences to its residents at nature's backyard? Reads like a dream. Right? Not anymore.

You just need to be ready if you want to experience life at its finest with over 40 breathtaking amenities comprising a rooftop swimming pool, a massively spacious cricket ground and 4 acres of sprawling greens within the coveted residential address. The latest sensation of Balkum, Thane.

Introducing, Runwal Eirene



ARTIST'S IMPRESSION

# Planned TO PERFECTION

Providing a plethora of lifestyle amenities for all age groups



## COMMON AMENITIES

Entrance Boulevard  
Grand Entry  
Pet Park  
Multi-purpose Court  
Lobby Entrances  
Podium Driveway  
Reading Pockets  
Interactive Corners  
Garden Entry  
Kid's Zone  
Play Lawn  
Fun Walk  
Accupressure Walk  
Study Garden  
Senior's Corner

Jogging Track  
Family Picnic Area  
Fitness Zone  
Garden Lounge  
Color Court  
Football Lawn  
Cricket Lawn  
Chess Plaza  
Sitting Steps  
Orchard  
Herbal Garden  
Tree-lined Edge  
Service Entry  
Party Spillover  
Clubhouse

## CLUBHOUSE AMENITIES

Lounge Area  
Indoor Games  
Party Hall  
Gymnasium  
Mini - Theatre  
Pantry  
Rooftop Pool  
Kid's Pool  
Shaded Deck  
Steam Room  
Changing Room

# Infrastructure

FOR PROGRESSIVE FUTURE



ARTIST'S IMPRESSION

## ENHANCED CONNECTIVITY

While a lot is pegged on Thane's future, it has already set itself a firm base with a robust infrastructure.

Thane is well-linked with TMT, KDMT, MBMT and UBT.

Thane is connected to Mumbai by road via the Eastern Express Highway.

The Thane-Belapur Road connects Thane to Navi Mumbai and Panvel.

Ghodbunder Road connects the Eastern and Western Express Highways.

## UPCOMING INFRASTRUCTURE

With the government investing heavily in the area, there are several new projects that are coming up.

3,500 Cr. Kurla-Thane Railway Elevated Corridor.

Proposed metro line 4 across Wadala-Ghatkopar-Teen Hath Naka, (Thane) - Kasarvadavali.

Proposed 24 km. Metro 5 corridor connecting Thane, Bhiwandi and Kalyan.  
Closest Metro Station Balkum Naka.

An Olympic-size swimming pool.

Proposed highway plan linking Balkum, Saket, and Nashik.

Upcoming Grand Central Park and ISKCON temple.

Source: [http://thanecity.gov.in/uploadpdf/TMC\\_SCP\\_GOM\\_201512101450102667.pdf](http://thanecity.gov.in/uploadpdf/TMC_SCP_GOM_201512101450102667.pdf) • [http://indiaibusiness.nic.in/newdesign/upload/reports/CII%20-%20JLL\\_Report\\_on\\_Real\\_Estate\\_Sector.pdf](http://indiaibusiness.nic.in/newdesign/upload/reports/CII%20-%20JLL_Report_on_Real_Estate_Sector.pdf) • <http://indiaibusiness.nic.in> : Emerging investment hotspots - India in Business

# Ready

FOR LIFE



ARTIST'S IMPRESSION

# Live

SPACIOUS LIVING ROOMS



ARTIST'S IMPRESSION

# Relax

COZY BEDROOMS



ARTIST'S IMPRESSION

# Indulge

THE GRAND CLUBHOUSE





*Roll*  
SKATING RINK

STOCK IMAGE



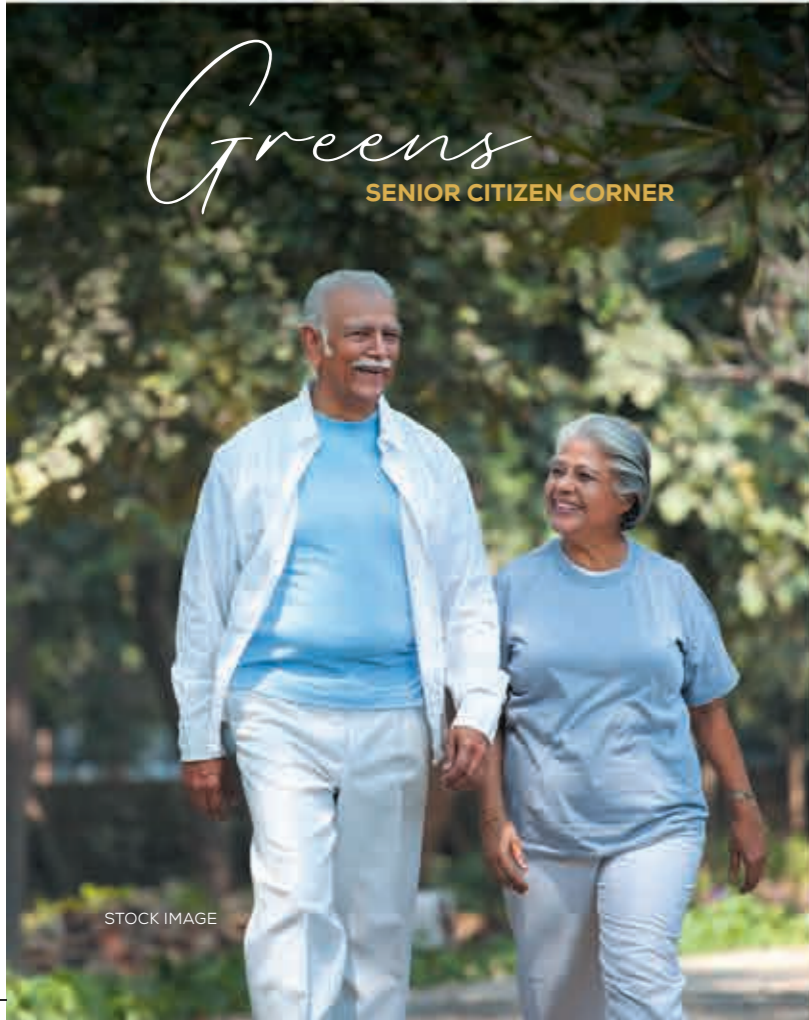
*Jog*  
THE LAP OF NATURE

STOCK IMAGE



*Celebrate*  
MULTIPURPOSE HALL

STOCK IMAGE



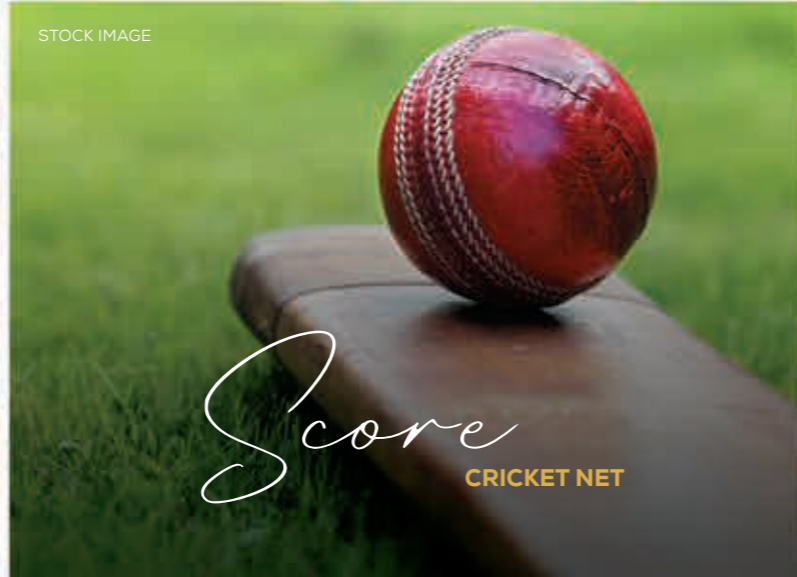
*Greens*  
SENIOR CITIZEN CORNER

STOCK IMAGE



*Stroke-Play*  
THE CRICKET LAWN

ARTIST'S IMPRESSION



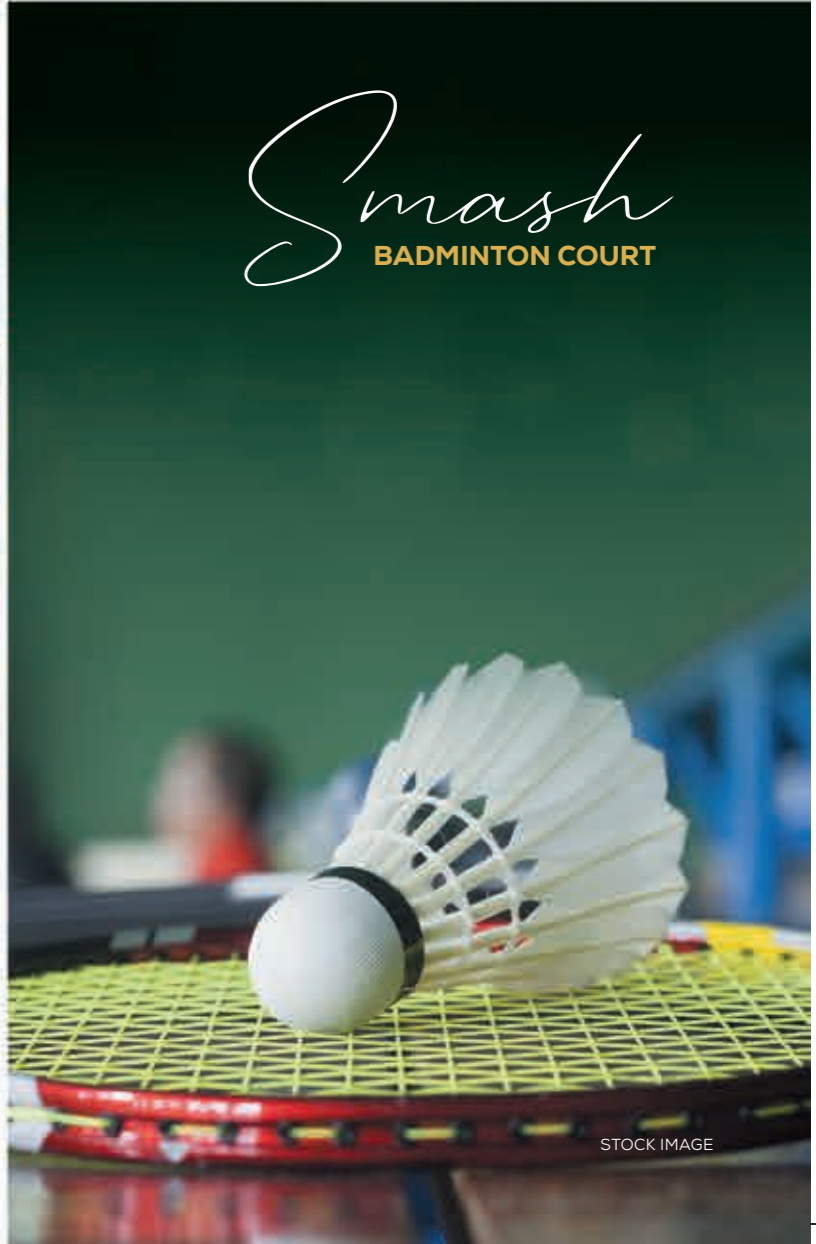
*Score*  
CRICKET NET

STOCK IMAGE



*Enter*  
THE WORLD OF PEACE

ACTUAL PHOTOGRAPH

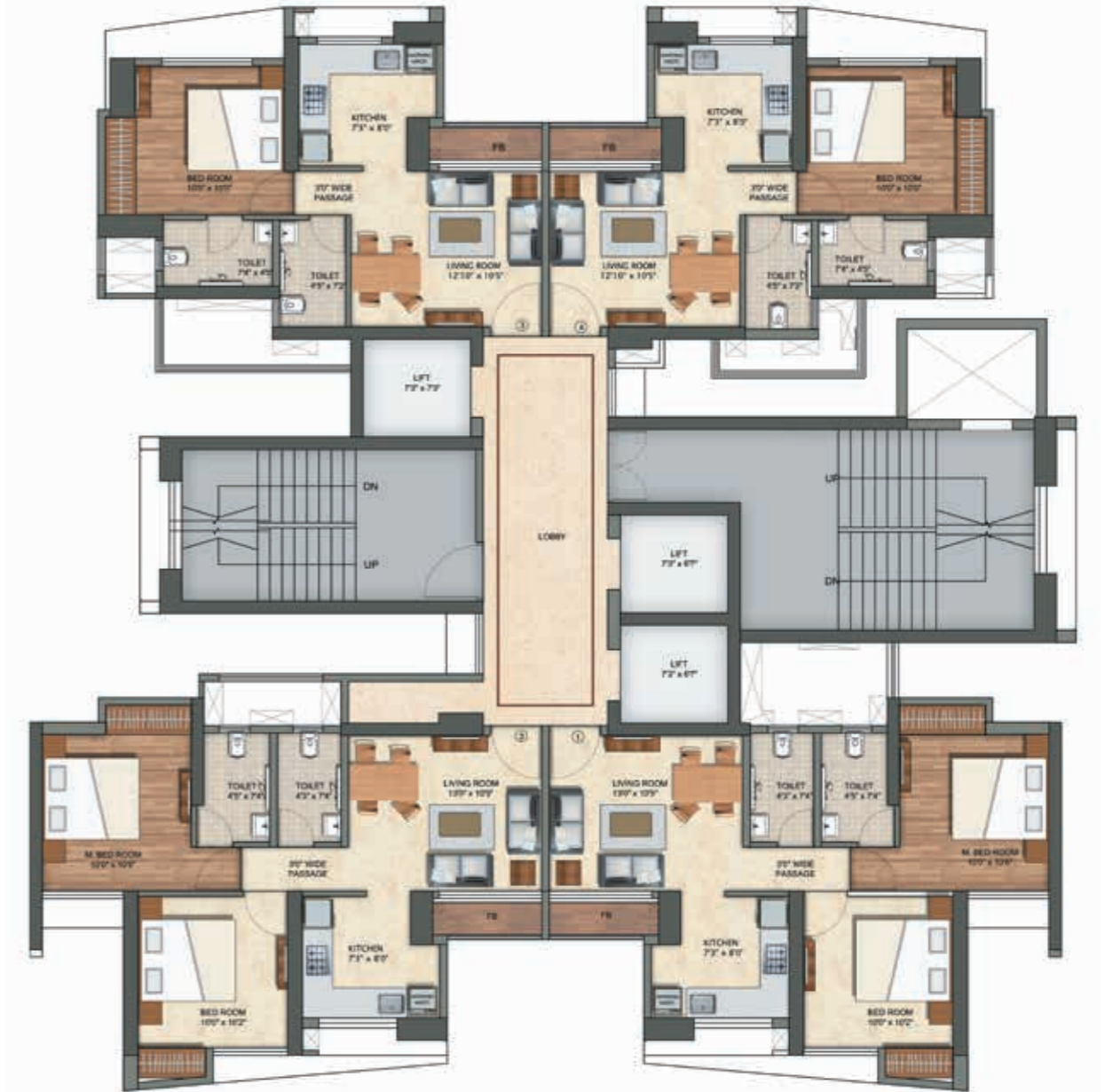
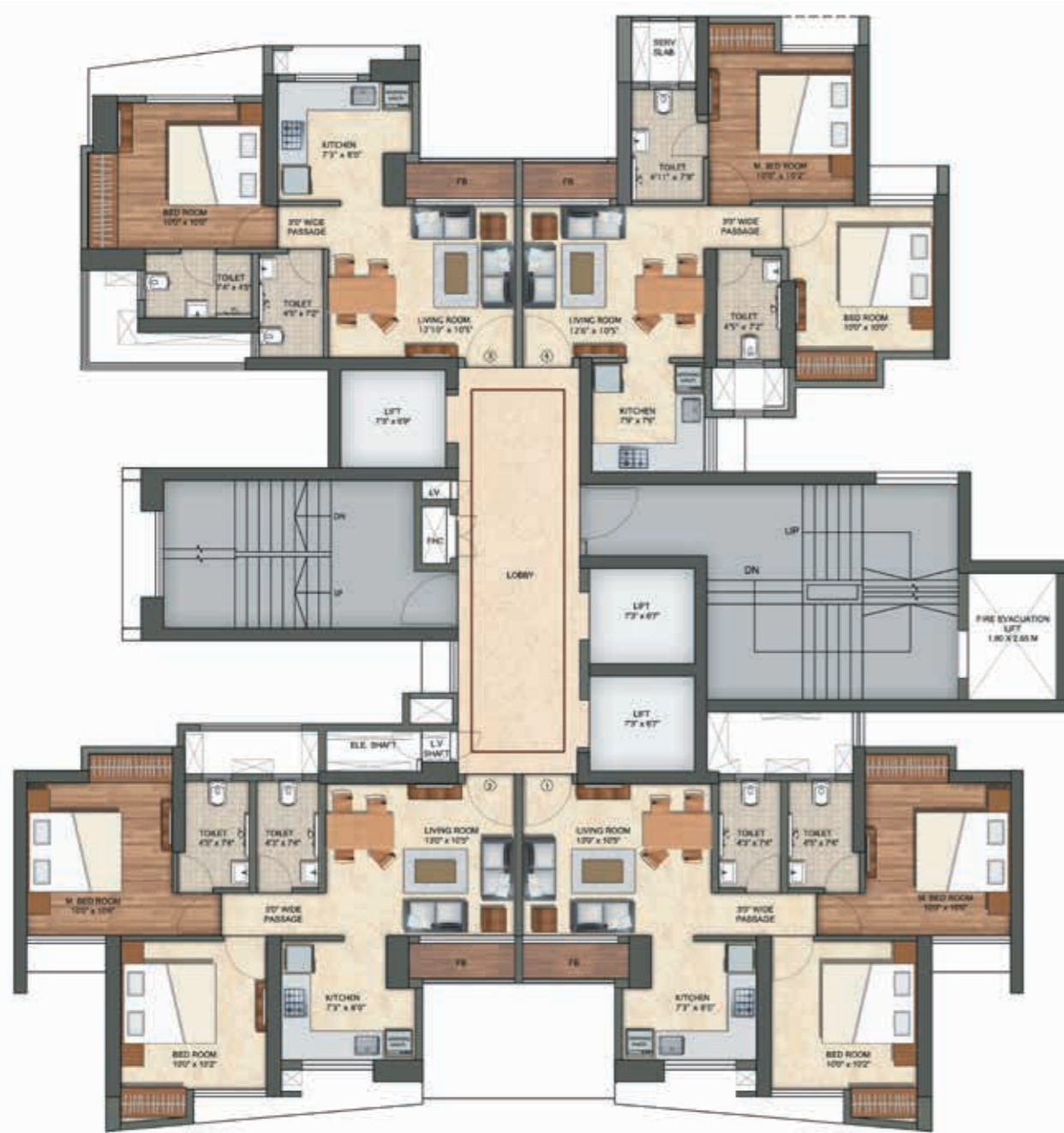


*Smash*  
BADMINTON COURT

STOCK IMAGE

## TOWER - 6A TYPICAL FLOOR PLAN

## TOWER - 6B TYPICAL FLOOR PLAN



Maha RERA No. P5170004574 for Runwal Eirene - Part 1. Available on Website: [www.maharera.mahaonline.gov.in](http://www.maharera.mahaonline.gov.in)



Disclaimer: The images and other details herein are only indicative. The Developer / Owner reserves the right to change any or all of these in the interest of the development, as per provision of law. Artist's Impressions are used to illustrate amenities, specifications, images and other details. Tolerance of +/- 3% is possible in the unit areas on account of design and construction variances. All brands stated are subject to final decision of the project architect. This electronic/printed material does not constitute an offer and/or contract of any type between the Developer/Owner and the recipient. No booking or allotment shall be deemed to have been made on the basis of this electronic/printed material. Any Purchaser / Lessee of this development shall be governed by the terms and conditions of the agreement for sale/lease entered into between the parties, and no details mentioned in this electronic / printed material shall in any way govern such transactions unless as may be otherwise expressly provided in the agreement for sale/lease by the Developer/Owner. The Developer/Owner does not warrant or assume any liability or responsibility for the accuracy or completeness of any information contained herein. Project presently financed by Aditya Birla Finance Limited (ABFL) & Aditya Birla Housing Finance Limited (ABHFL) and NOC / permission of Aditya Birla Finance Limited (ABFL) & Aditya Birla Housing Finance Limited (ABHFL) will be obtained for sale of property, if required. This electronic/printed material has been created keeping in mind the provisions of the Real Estate (Regulation and Development) Act, 2016 (RERA) applicable for projects in Maharashtra. You are required to verify all the details, including area, amenities, services, terms of sales and payments and other relevant terms independently with the Developer's sales team only, by physically visiting the project site and the authorised website of RERA. You are requested NOT to visit any unauthorized or unverified website/broker (online/offline) to receive any information about any projects of the Developer and/or its sister concerns.

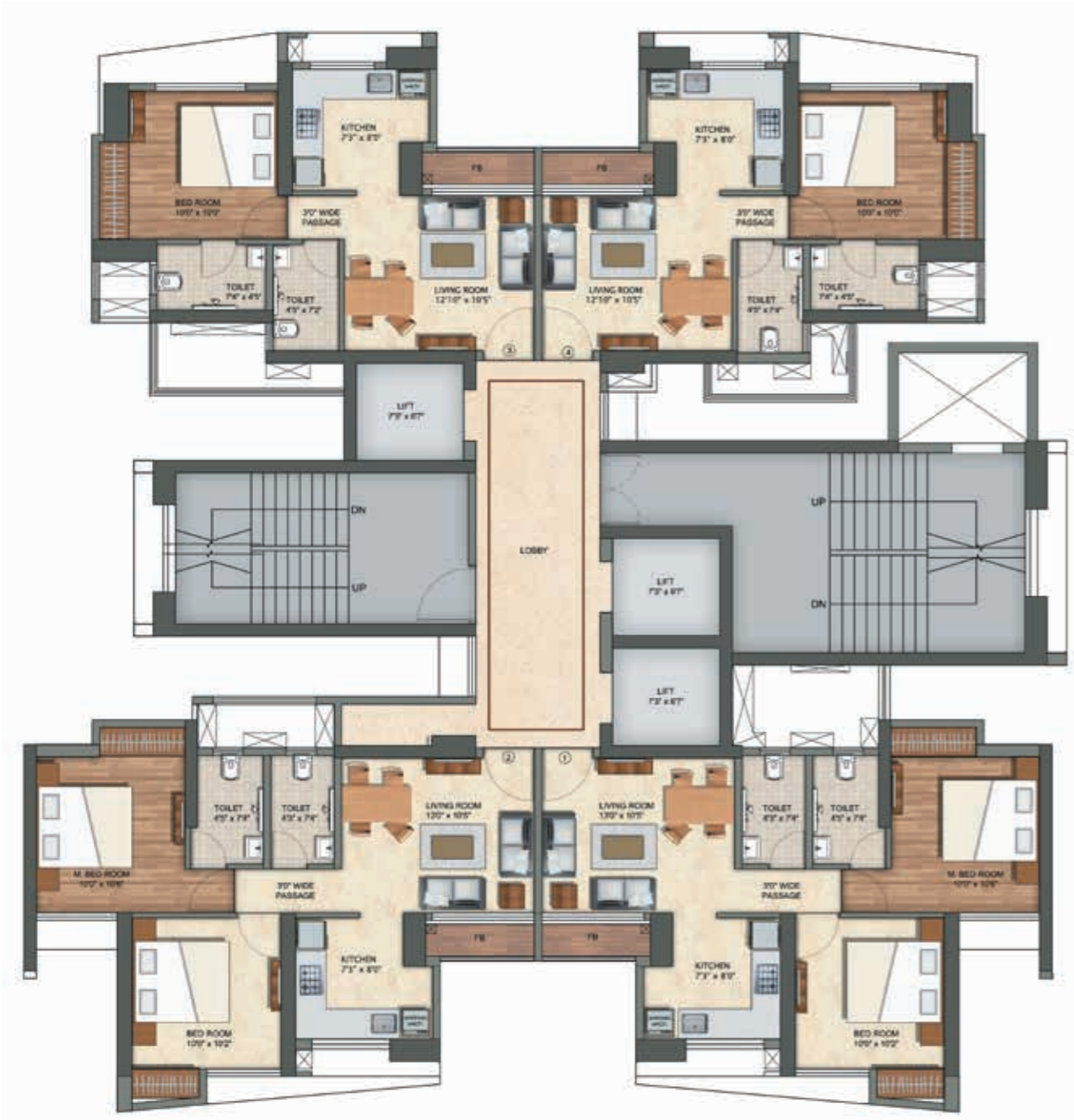
Maha RERA No. P5170004574 for Runwal Eirene - Part 1. Available on Website: [www.maharera.mahaonline.gov.in](http://www.maharera.mahaonline.gov.in)



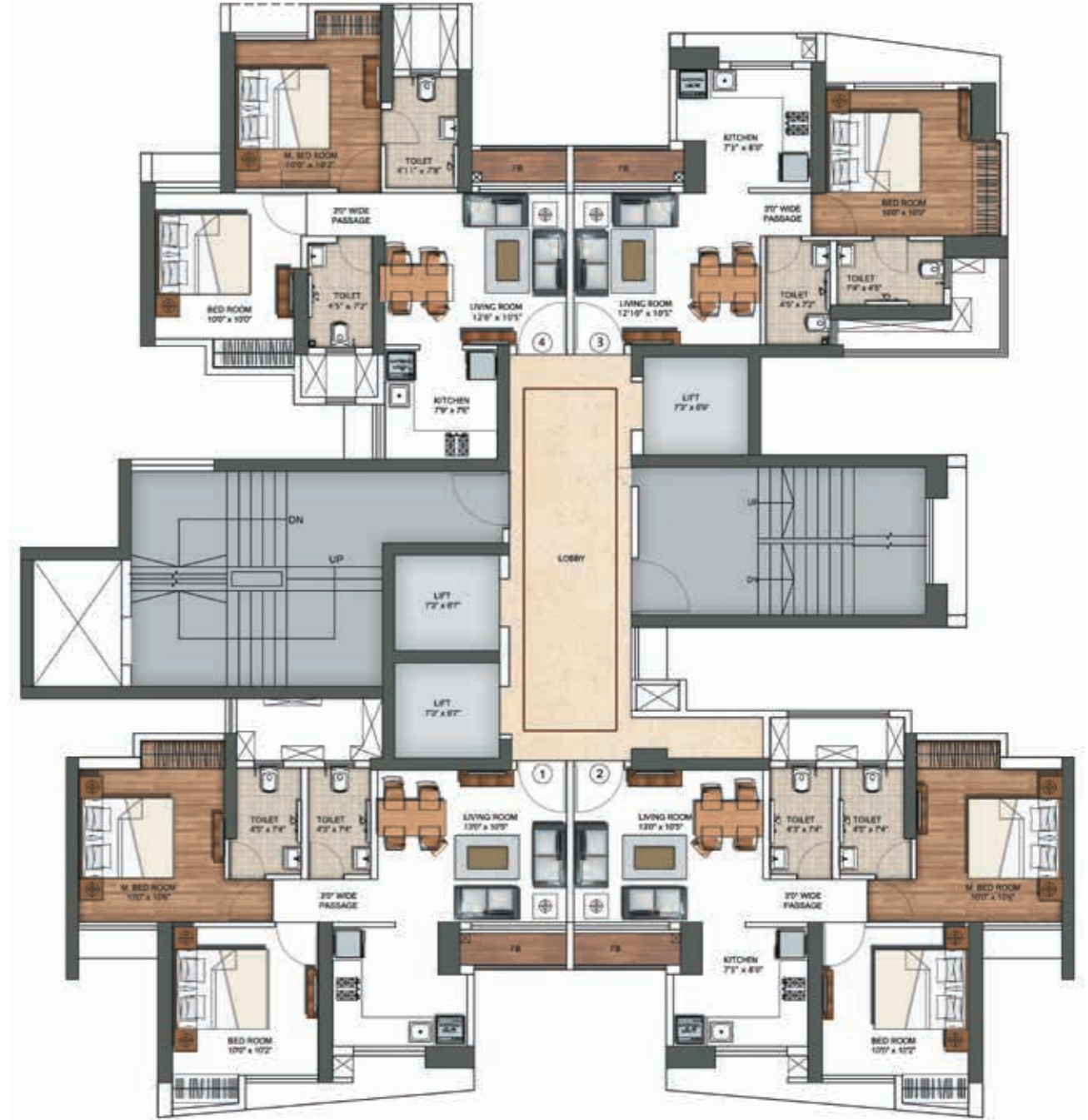
Disclaimer: The images and other details herein are only indicative. The Developer / Owner reserves the right to change any or all of these in the interest of the development, as per provision of law. Artist's Impressions are used to illustrate amenities, specifications, images and other details. Tolerance of +/- 3% is possible in the unit areas on account of design and construction variances. All brands stated are subject to final decision of the project architect. This electronic/printed material does not constitute an offer and/or contract of any type between the Developer/Owner and the recipient. No booking or allotment shall be deemed to have been made on the basis of this electronic/printed material. Any Purchaser / Lessee of this development shall be governed by the terms and conditions of the agreement for sale/lease entered into between the parties, and no details mentioned in this electronic / printed material shall in any way govern such transactions unless as may be otherwise expressly provided in the agreement for sale/lease by the Developer/Owner. The Developer/Owner does not warrant or assume any liability or responsibility for the accuracy or completeness of any information contained herein. Project presently financed by Aditya Birla Finance Limited (ABFL) & Aditya Birla Housing Finance Limited (ABHFL) and NOC / permission of Aditya Birla Finance Limited (ABFL) & Aditya Birla Housing Finance Limited (ABHFL) will be obtained for sale of property, if required. This electronic/printed material has been created keeping in mind the provisions of the Real Estate (Regulation and Development) Act, 2016 (RERA) applicable for projects in Maharashtra. You are required to verify all the details, including area, amenities, services, terms of sales and payments and other relevant terms independently with the Developer's sales team only, by physically visiting the project site and the authorised website of RERA. You are requested NOT to visit any unauthorized or unverified website/broker (online/offline) to receive any information about any projects of the Developer and/or its sister concerns.



## TOWER - 6C TYPICAL FLOOR PLAN



## TOWER - 6D TYPICAL FLOOR PLAN



Maha RERA No. P5170004574 for Runwal Eirene - Part 1. Available on Website: [www.maharera.mahaonline.gov.in](http://www.maharera.mahaonline.gov.in)



Disclaimer: The images and other details herein are only indicative. The Developer / Owner reserves the right to change any or all of these in the interest of the development, as per provision of law. Artist's Impressions are used to illustrate amenities, specifications, images and other details. Tolerance of +/- 3% is possible in the unit areas on account of design and construction variances. All brands stated are subject to final decision of the project architect. This electronic/printed material does not constitute an offer and/or contract of any type between the Developer/Owner and the recipient. No booking or allotment shall be deemed to have been made on the basis of this electronic/printed material. Any Purchaser / Lessee of this development shall be governed by the terms and conditions of the agreement for sale/lease entered into between the parties, and no details mentioned in this electronic / printed materials shall in any way govern such transactions unless as may be otherwise expressly provided in the agreement for sale/lease by the Developer/Owner. The Developer/Owner does not warrant or assume any liability or responsibility for the accuracy or completeness of any information contained herein. Project presently financed by Aditya Birla Finance Limited (ABFL) & Aditya Birla Housing Finance Limited (ABHFL) and NOC / permission of Aditya Birla Finance Limited (ABFL) & Aditya Birla Housing Finance Limited (ABHFL) will be obtained for sale of property, if required. This electronic/printed material has been created keeping in mind the provisions of the Real Estate (Regulation and Development) Act, 2016 (RERA) applicable for projects in Maharashtra. You are required to verify all the details, including area, amenities, services, terms of sales and payments and other relevant terms independently with the Developer's sales team only, by physically visiting the project site and the authorised website of RERA. You are requested NOT to visit any unauthorized or unverified website/broker (online/offline) to receive any information about any projects of the Developer and/or its sister concerns.

Maha RERA No. P5170004574 for Runwal Eirene - Part 1. Available on Website: [www.maharera.mahaonline.gov.in](http://www.maharera.mahaonline.gov.in)



Disclaimer: The images and other details herein are only indicative. The Developer / Owner reserves the right to change any or all of these in the interest of the development, as per provision of law. Artist's Impressions are used to illustrate amenities, specifications, images and other details. Tolerance of +/- 3% is possible in the unit areas on account of design and construction variances. All brands stated are subject to final decision of the project architect. This electronic/printed material does not constitute an offer and/or contract of any type between the Developer/Owner and the recipient. No booking or allotment shall be deemed to have been made on the basis of this electronic/printed material. Any Purchaser / Lessee of this development shall be governed by the terms and conditions of the agreement for sale/lease entered into between the parties, and no details mentioned in this electronic / printed materials shall in any way govern such transactions unless as may be otherwise expressly provided in the agreement for sale/lease by the Developer/Owner. The Developer/Owner does not warrant or assume any liability or responsibility for the accuracy or completeness of any information contained herein. Project presently financed by Aditya Birla Finance Limited (ABFL) & Aditya Birla Housing Finance Limited (ABHFL) and NOC / permission of Aditya Birla Finance Limited (ABFL) & Aditya Birla Housing Finance Limited (ABHFL) will be obtained for sale of property, if required. This electronic/printed material has been created keeping in mind the provisions of the Real Estate (Regulation and Development) Act, 2016 (RERA) applicable for projects in Maharashtra. You are required to verify all the details, including area, amenities, services, terms of sales and payments and other relevant terms independently with the Developer's sales team only, by physically visiting the project site and the authorised website of RERA. You are requested NOT to visit any unauthorized or unverified website/broker (online/offline) to receive any information about any projects of the Developer and/or its sister concerns.

**TOWER - 6A**  
**2 BHK UNIT PLAN (TYPE - 01)**

**TOWER - 6A**  
**2 BHK UNIT PLAN (TYPE - 02)**



Maha RERA No. P51700004574 for Runwal Eirene - Part 1. Available on Website: [www.maharera.mahaonline.gov.in](http://www.maharera.mahaonline.gov.in)



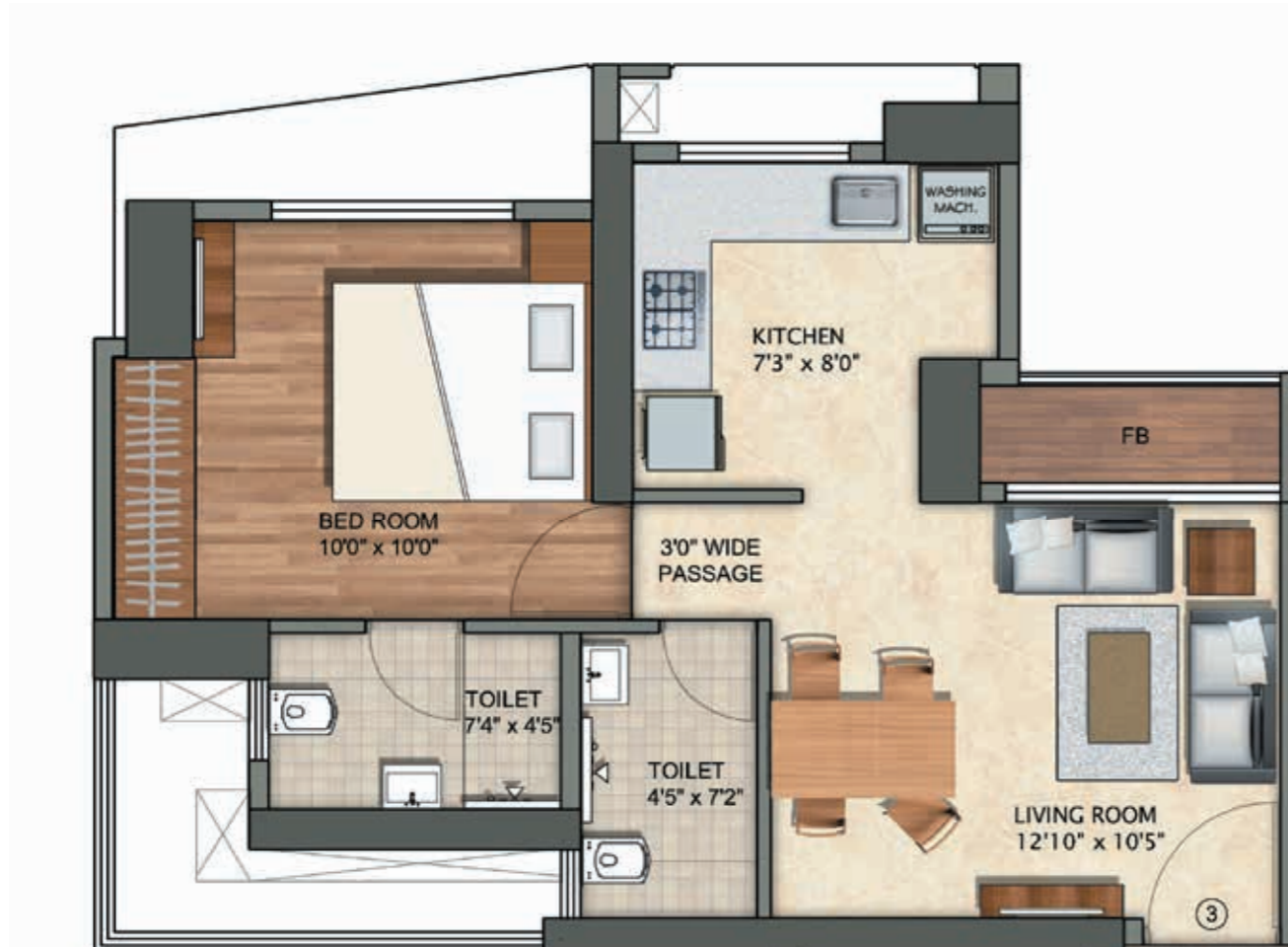
Disclaimer: The images and other details herein are only indicative. The Developer / Owner reserves the right to change any or all of these in the interest of the development, as per provision of law. Artist's Impressions are used to illustrate amenities, specifications, images and other details. Tolerance of +/- 3% is possible in the unit areas on account of design and construction variances. All brands stated are subject to final decision of the project architect. This electronic/printed material does not constitute an offer and/or contract of any type between the Developer/Owner and the recipient. No booking or allotment shall be deemed to have been made on the basis of this electronic/printed material. Any Purchaser / Lessee of this development shall be governed by the terms and conditions of the agreement for sale/lease entered into between the parties, and no details mentioned in this electronic / printed material shall in any way govern such transactions unless as may be otherwise expressly provided in the agreement for sale/lease by the Developer/Owner. The Developer/Owner does not warrant or assume any liability or responsibility for the accuracy or completeness of any information contained herein. Project presently financed by Aditya Birla Finance Limited (ABFL) & Aditya Birla Housing Finance Limited (ABHFL) and NOC / permission of Aditya Birla Finance Limited (ABFL) & Aditya Birla Housing Finance Limited (ABHFL) will be obtained for sale of property, if required. This electronic/printed material has been created keeping in mind the provisions of the Real Estate (Regulation and Development) Act, 2016 (RERA) applicable for projects in Maharashtra. You are required to verify all the details, including area, amenities, services, terms of sales and payments and other relevant terms independently with the Developer's sales team only, by physically visiting the project site and the authorised website of RERA. You are requested NOT to visit any unauthorized or unverified website/broker (online/offline) to receive any information about any projects of the Developer and/or its sister concerns.

Maha RERA No. P51700004574 for Runwal Eirene - Part 1. Available on Website: [www.maharera.mahaonline.gov.in](http://www.maharera.mahaonline.gov.in)

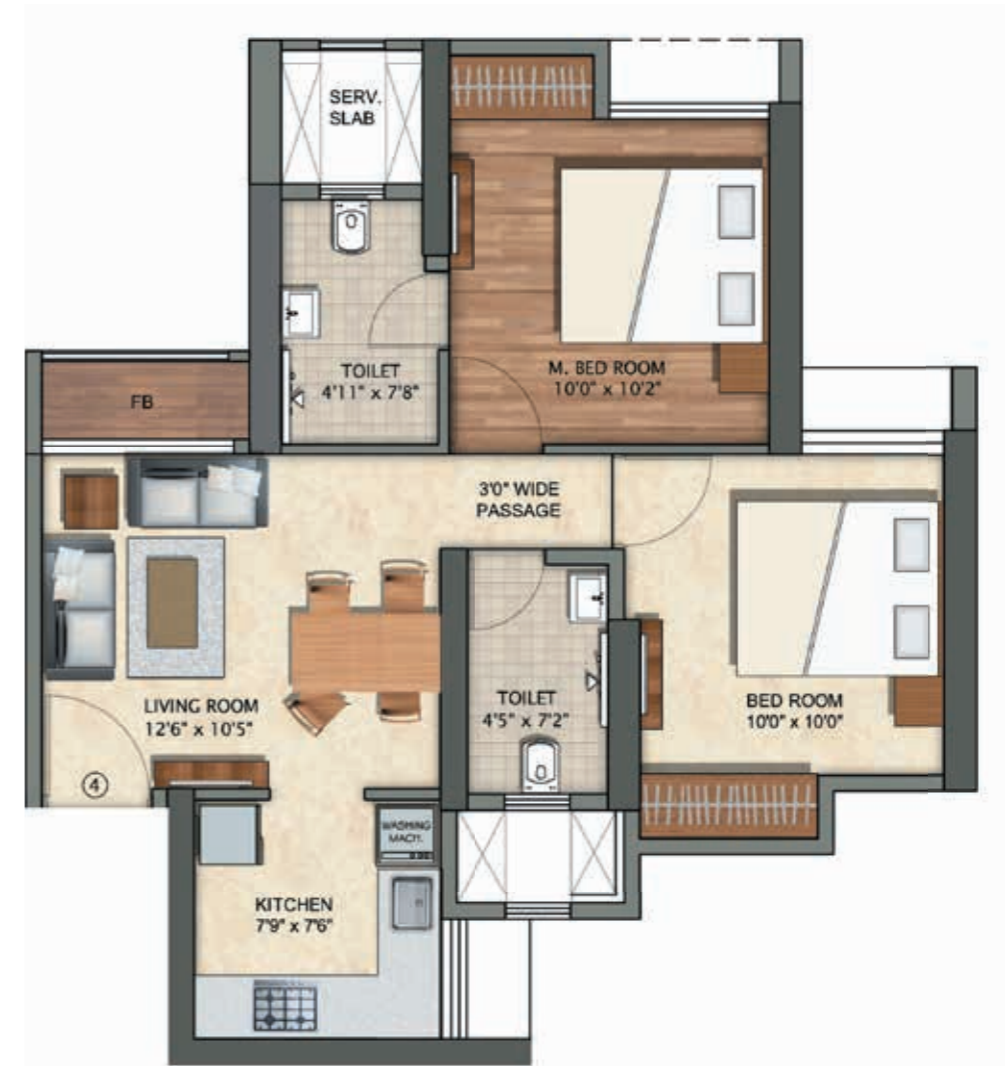


Disclaimer: The images and other details herein are only indicative. The Developer / Owner reserves the right to change any or all of these in the interest of the development, as per provision of law. Artist's Impressions are used to illustrate amenities, specifications, images and other details. Tolerance of +/- 3% is possible in the unit areas on account of design and construction variances. All brands stated are subject to final decision of the project architect. This electronic/printed material does not constitute an offer and/or contract of any type between the Developer/Owner and the recipient. No booking or allotment shall be deemed to have been made on the basis of this electronic/printed material. Any Purchaser / Lessee of this development shall be governed by the terms and conditions of the agreement for sale/lease entered into between the parties, and no details mentioned in this electronic / printed material shall in any way govern such transactions unless as may be otherwise expressly provided in the agreement for sale/lease by the Developer/Owner. The Developer/Owner does not warrant or assume any liability or responsibility for the accuracy or completeness of any information contained herein. Project presently financed by Aditya Birla Finance Limited (ABFL) & Aditya Birla Housing Finance Limited (ABHFL) and NOC / permission of Aditya Birla Finance Limited (ABFL) & Aditya Birla Housing Finance Limited (ABHFL) will be obtained for sale of property, if required. This electronic/printed material has been created keeping in mind the provisions of the Real Estate (Regulation and Development) Act, 2016 (RERA) applicable for projects in Maharashtra. You are required to verify all the details, including area, amenities, services, terms of sales and payments and other relevant terms independently with the Developer's sales team only, by physically visiting the project site and the authorised website of RERA. You are requested NOT to visit any unauthorized or unverified website/broker (online/offline) to receive any information about any projects of the Developer and/or its sister concerns.

**TOWER - 6A**  
**1 BHK UNIT PLAN (TYPE - 03)**



**TOWER - 6A**  
**2 BHK UNIT PLAN (TYPE - 04)**



Maha RERA No. P51700004574 for Runwal Eirene - Part 1. Available on Website: [www.maharera.mahaonline.gov.in](http://www.maharera.mahaonline.gov.in) 

Disclaimer: The images and other details herein are only indicative. The Developer / Owner reserves the right to change any or all of these in the interest of the development, as per provision of law. Artist's Impressions are used to illustrate amenities, specifications, images and other details. Tolerance of +/- 3% is possible in the unit areas on account of design and construction variances. All brands stated are subject to final decision of the project architect. This electronic/printed material does not constitute an offer and/or contract of any type between the Developer/Owner and the recipient. No booking or allotment shall be deemed to have been made on the basis of this electronic/printed material. Any Purchaser / Lessee of this development shall be governed by the terms and conditions of the agreement for sale/lease entered into between the parties, and no details mentioned in this electronic / printed material shall in any way govern such transactions unless as may be otherwise expressly provided in the agreement for sale/lease by the Developer/Owner. The Developer/Owner does not warrant or assume any liability or responsibility for the accuracy or completeness of any information contained herein. Project presently financed by Aditya Birla Finance Limited (ABFL) & Aditya Birla Housing Finance Limited (ABHFL) and NOC / permission of Aditya Birla Finance Limited (ABFL) & Aditya Birla Housing Finance Limited (ABHFL) will be obtained for sale of property, if required. This electronic/printed material has been created keeping in mind the provisions of the Real Estate (Regulation and Development) Act, 2016 (RERA) applicable for projects in Maharashtra. You are required to verify all the details, including area, amenities, services, terms of sales and payments and other relevant terms independently with the Developer's sales team only, by physically visiting the project site and the authorised website of RERA. You are requested NOT to visit any unauthorized or unverified website/broker (online/offline) to receive any information about any projects of the Developer and/or its sister concerns.

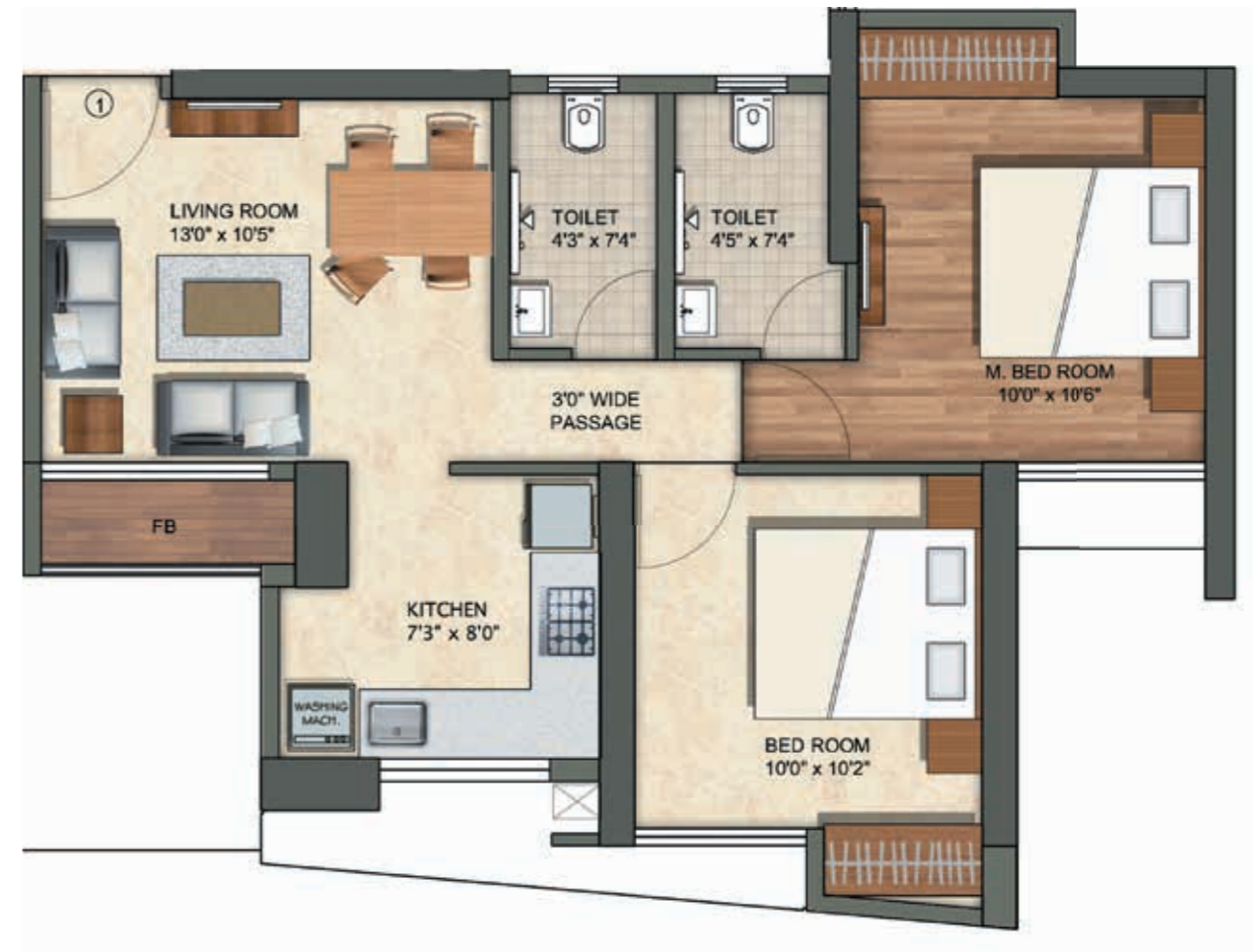
Maha RERA No. P51700004574 for Runwal Eirene - Part 1. Available on Website: [www.maharera.mahaonline.gov.in](http://www.maharera.mahaonline.gov.in) 

Disclaimer: The images and other details herein are only indicative. The Developer / Owner reserves the right to change any or all of these in the interest of the development, as per provision of law. Artist's Impressions are used to illustrate amenities, specifications, images and other details. Tolerance of +/- 3% is possible in the unit areas on account of design and construction variances. All brands stated are subject to final decision of the project architect. This electronic/printed material does not constitute an offer and/or contract of any type between the Developer/Owner and the recipient. No booking or allotment shall be deemed to have been made on the basis of this electronic/printed material. Any Purchaser / Lessee of this development shall be governed by the terms and conditions of the agreement for sale/lease entered into between the parties, and no details mentioned in this electronic / printed material shall in any way govern such transactions unless as may be otherwise expressly provided in the agreement for sale/lease by the Developer/Owner. The Developer/Owner does not warrant or assume any liability or responsibility for the accuracy or completeness of any information contained herein. Project presently financed by Aditya Birla Finance Limited (ABFL) & Aditya Birla Housing Finance Limited (ABHFL) and NOC / permission of Aditya Birla Finance Limited (ABFL) & Aditya Birla Housing Finance Limited (ABHFL) will be obtained for sale of property, if required. This electronic/printed material has been created keeping in mind the provisions of the Real Estate (Regulation and Development) Act, 2016 (RERA) applicable for projects in Maharashtra. You are required to verify all the details, including area, amenities, services, terms of sales and payments and other relevant terms independently with the Developer's sales team only, by physically visiting the project site and the authorised website of RERA. You are requested NOT to visit any unauthorized or unverified website/broker (online/offline) to receive any information about any projects of the Developer and/or its sister concerns.

**TOWER - 6A**  
**1 BHK UNIT PLAN (TYPE - 05)**



**TOWER - 6B**  
**2 BHK UNIT PLAN (TYPE - 01)**



Maha RERA No. P51700004574 for Runwal Eirene - Part 1. Available on Website: [www.maharera.mahaonline.gov.in](http://www.maharera.mahaonline.gov.in)



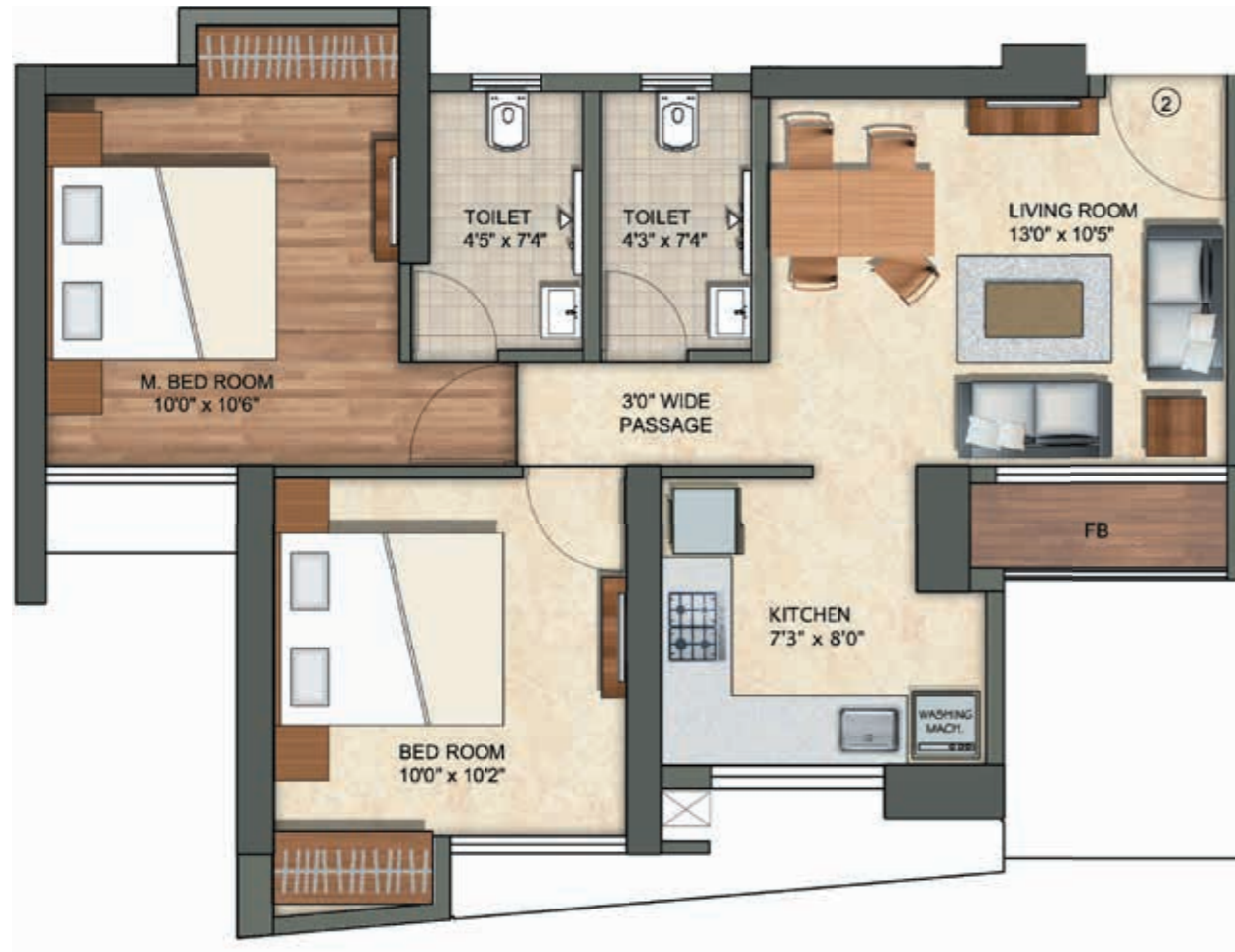
Disclaimer: The images and other details herein are only indicative. The Developer / Owner reserves the right to change any or all of these in the interest of the development, as per provision of law. Artist's Impressions are used to illustrate amenities, specifications, images and other details. Tolerance of +/- 3% is possible in the unit areas on account of design and construction variances. All brands stated are subject to final decision of the project architect. This electronic/printed material does not constitute an offer and/or contract of any type between the Developer/Owner and the recipient. No booking or allotment shall be deemed to have been made on the basis of this electronic/printed material. Any Purchaser / Lessee of this development shall be governed by the terms and conditions of the agreement for sale/lease entered into between the parties, and no details mentioned in this electronic / printed material shall in any way govern such transactions unless as may be otherwise expressly provided in the agreement for sale/lease by the Developer/Owner. The Developer/Owner does not warrant or assume any liability or responsibility for the accuracy or completeness of any information contained herein. Project presently financed by Aditya Birla Finance Limited (ABFL) & Aditya Birla Housing Finance Limited (ABHFL) and NOC / permission of Aditya Birla Finance Limited (ABFL) & Aditya Birla Housing Finance Limited (ABHFL) will be obtained for sale of property, if required. This electronic/printed material has been created keeping in mind the provisions of the Real Estate (Regulation and Development) Act, 2016 (RERA) applicable for projects in Maharashtra. You are required to verify all the details, including area, amenities, services, terms of sales and payments and other relevant terms independently with the Developer's sales team only, by physically visiting the project site and the authorised website of RERA. You are requested NOT to visit any unauthorized or unverified website/broker (online/offline) to receive any information about any projects of the Developer and/or its sister concerns.

Maha RERA No. P51700004574 for Runwal Eirene - Part 1. Available on Website: [www.maharera.mahaonline.gov.in](http://www.maharera.mahaonline.gov.in)

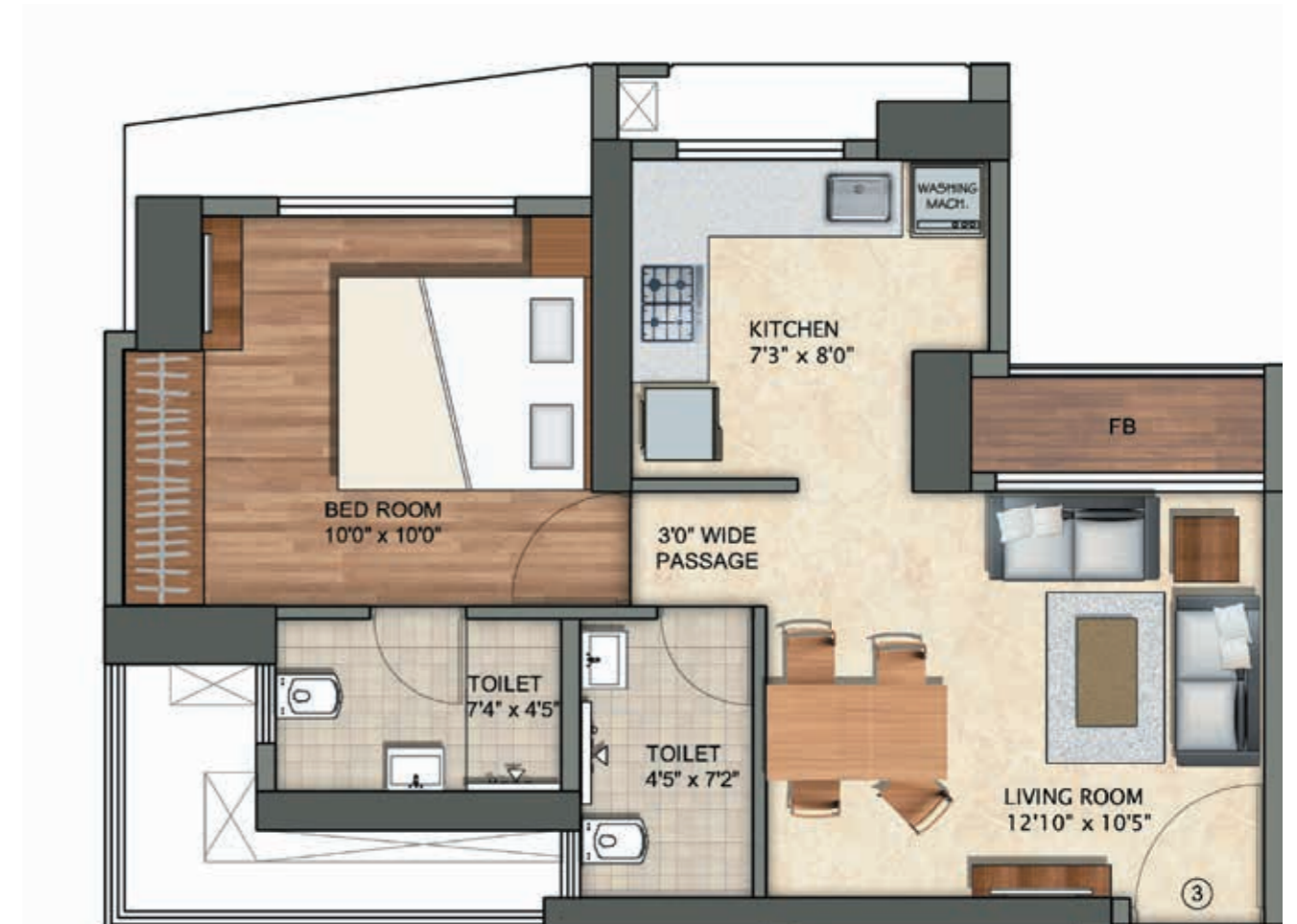


Disclaimer: The images and other details herein are only indicative. The Developer / Owner reserves the right to change any or all of these in the interest of the development, as per provision of law. Artist's Impressions are used to illustrate amenities, specifications, images and other details. Tolerance of +/- 3% is possible in the unit areas on account of design and construction variances. All brands stated are subject to final decision of the project architect. This electronic/printed material does not constitute an offer and/or contract of any type between the Developer/Owner and the recipient. No booking or allotment shall be deemed to have been made on the basis of this electronic/printed material. Any Purchaser / Lessee of this development shall be governed by the terms and conditions of the agreement for sale/lease entered into between the parties, and no details mentioned in this electronic / printed material shall in any way govern such transactions unless as may be otherwise expressly provided in the agreement for sale/lease by the Developer/Owner. The Developer/Owner does not warrant or assume any liability or responsibility for the accuracy or completeness of any information contained herein. Project presently financed by Aditya Birla Finance Limited (ABFL) & Aditya Birla Housing Finance Limited (ABHFL) and NOC / permission of Aditya Birla Finance Limited (ABFL) & Aditya Birla Housing Finance Limited (ABHFL) will be obtained for sale of property, if required. This electronic/printed material has been created keeping in mind the provisions of the Real Estate (Regulation and Development) Act, 2016 (RERA) applicable for projects in Maharashtra. You are required to verify all the details, including area, amenities, services, terms of sales and payments and other relevant terms independently with the Developer's sales team only, by physically visiting the project site and the authorised website of RERA. You are requested NOT to visit any unauthorized or unverified website/broker (online/offline) to receive any information about any projects of the Developer and/or its sister concerns.

**TOWER - 6B**  
**2 BHK UNIT PLAN (TYPE - 02)**



**TOWER - 6B**  
**1 BHK UNIT PLAN (TYPE - 03)**



Maha RERA No. P51700004574 for Runwal Eirene - Part 1. Available on Website: [www.maharera.mahaonline.gov.in](http://www.maharera.mahaonline.gov.in)



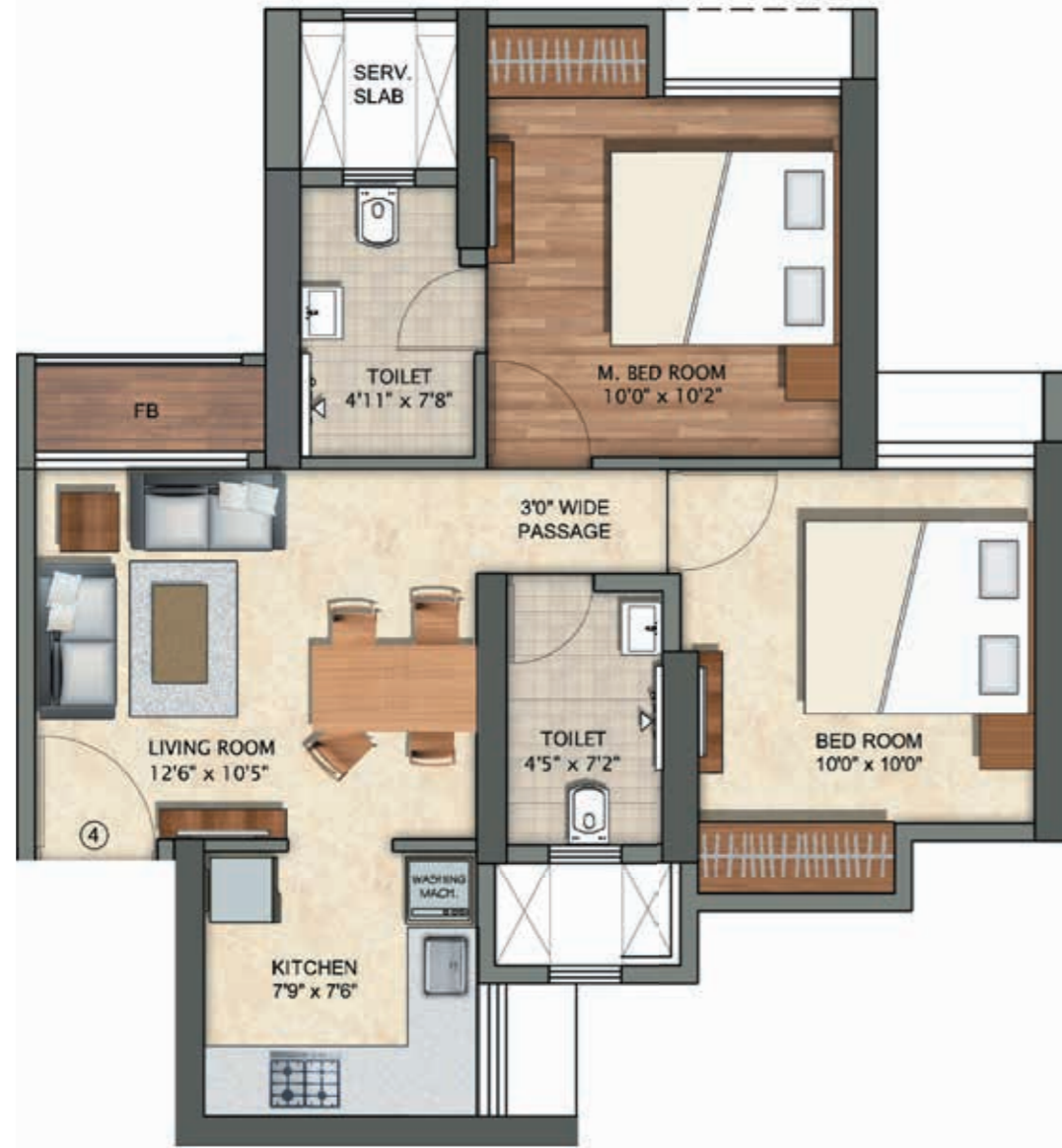
Disclaimer: The images and other details herein are only indicative. The Developer / Owner reserves the right to change any or all of these in the interest of the development, as per provision of law. Artist's Impressions are used to illustrate amenities, specifications, images and other details. Tolerance of +/- 3% is possible in the unit areas on account of design and construction variances. All brands stated are subject to final decision of the project architect. This electronic/printed material does not constitute an offer and/or contract of any type between the Developer/Owner and the recipient. No booking or allotment shall be deemed to have been made on the basis of this electronic/printed material. Any Purchaser / Lessee of this development shall be governed by the terms and conditions of the agreement for sale/lease entered into between the parties, and no details mentioned in this electronic / printed material shall in any way govern such transactions unless as may be otherwise expressly provided in the agreement for sale/lease by the Developer/Owner. The Developer/Owner does not warrant or assume any liability or responsibility for the accuracy or completeness of any information contained herein. Project presently financed by Aditya Birla Finance Limited (ABFL) & Aditya Birla Housing Finance Limited (ABHFL) and NOC / permission of Aditya Birla Finance Limited (ABFL) & Aditya Birla Housing Finance Limited (ABHFL) will be obtained for sale of property, if required. This electronic/printed material has been created keeping in mind the provisions of the Real Estate (Regulation and Development) Act, 2016 (RERA) applicable for projects in Maharashtra. You are required to verify all the details, including area, amenities, services, terms of sales and payments and other relevant terms independently with the Developer's sales team only, by physically visiting the project site and the authorised website of RERA. You are requested NOT to visit any unauthorized or unverified website/broker (online/offline) to receive any information about any projects of the Developer and/or its sister concerns.

Maha RERA No. P51700004574 for Runwal Eirene - Part 1. Available on Website: [www.maharera.mahaonline.gov.in](http://www.maharera.mahaonline.gov.in)

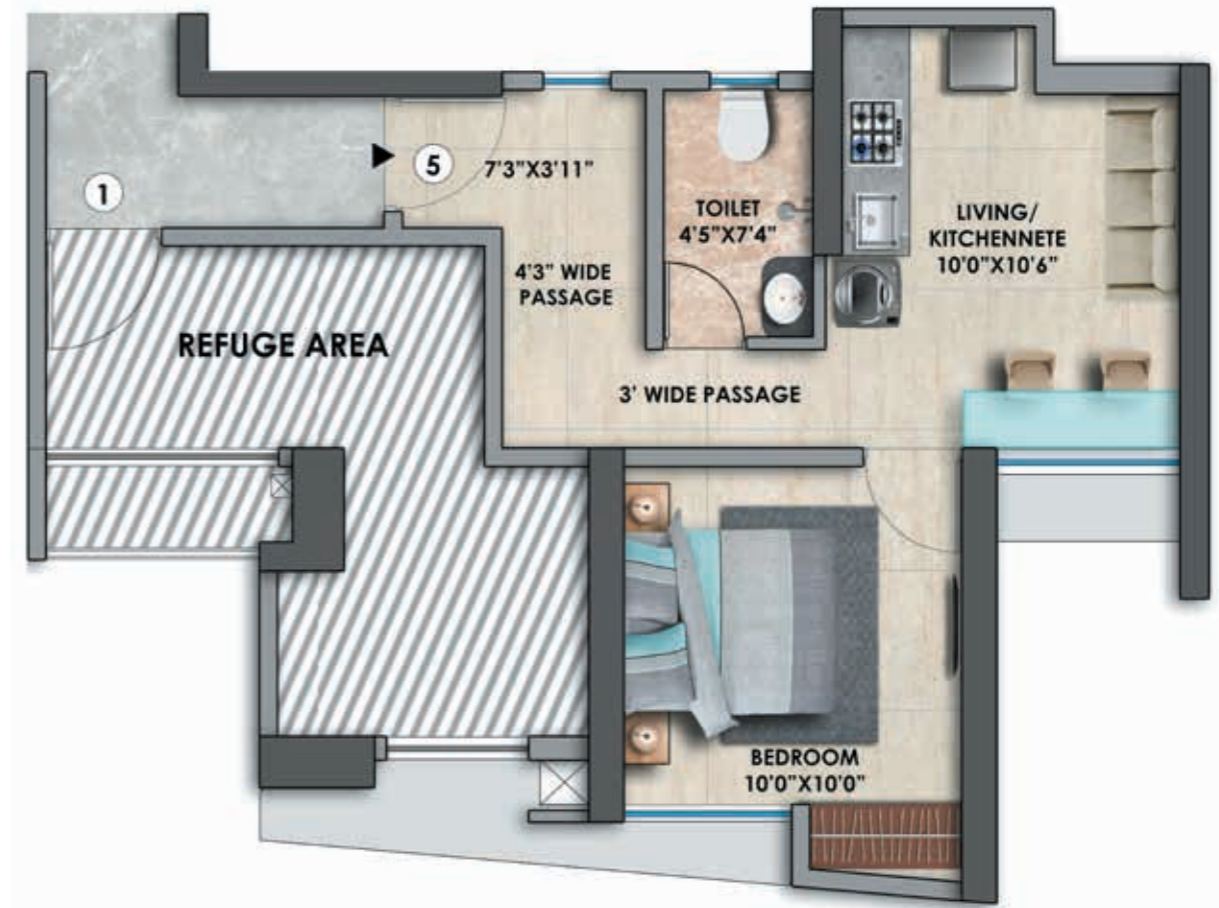


Disclaimer: The images and other details herein are only indicative. The Developer / Owner reserves the right to change any or all of these in the interest of the development, as per provision of law. Artist's Impressions are used to illustrate amenities, specifications, images and other details. Tolerance of +/- 3% is possible in the unit areas on account of design and construction variances. All brands stated are subject to final decision of the project architect. This electronic/printed material does not constitute an offer and/or contract of any type between the Developer/Owner and the recipient. No booking or allotment shall be deemed to have been made on the basis of this electronic/printed material. Any Purchaser / Lessee of this development shall be governed by the terms and conditions of the agreement for sale/lease entered into between the parties, and no details mentioned in this electronic / printed material shall in any way govern such transactions unless as may be otherwise expressly provided in the agreement for sale/lease by the Developer/Owner. The Developer/Owner does not warrant or assume any liability or responsibility for the accuracy or completeness of any information contained herein. Project presently financed by Aditya Birla Finance Limited (ABFL) & Aditya Birla Housing Finance Limited (ABHFL) and NOC / permission of Aditya Birla Finance Limited (ABFL) & Aditya Birla Housing Finance Limited (ABHFL) will be obtained for sale of property, if required. This electronic/printed material has been created keeping in mind the provisions of the Real Estate (Regulation and Development) Act, 2016 (RERA) applicable for projects in Maharashtra. You are required to verify all the details, including area, amenities, services, terms of sales and payments and other relevant terms independently with the Developer's sales team only, by physically visiting the project site and the authorised website of RERA. You are requested NOT to visit any unauthorized or unverified website/broker (online/offline) to receive any information about any projects of the Developer and/or its sister concerns.

**TOWER - 6B**  
**2 BHK UNIT PLAN (TYPE - 04)**



**TOWER - 6B**  
**1 BHK UNIT PLAN (TYPE - 05)**



Maha RERA No. P5170004574 for Runwal Eirene - Part 1. Available on Website: [www.maharera.mahaonline.gov.in](http://www.maharera.mahaonline.gov.in)



Disclaimer: The images and other details herein are only indicative. The Developer / Owner reserves the right to change any or all of these in the interest of the development, as per provision of law. Artist's Impressions are used to illustrate amenities, specifications, images and other details. Tolerance of +/- 3% is possible in the unit areas on account of design and construction variances. All brands stated are subject to final decision of the project architect. This electronic/printed material does not constitute an offer and/or contract of any type between the Developer/Owner and the recipient. No booking or allotment shall be deemed to have been made on the basis of this electronic/printed material. Any Purchaser / Lessee of this development shall be governed by the terms and conditions of the agreement for sale/lease entered into between the parties, and no details mentioned in this electronic / printed material shall in any way govern such transactions unless as may be otherwise expressly provided in the agreement for sale/lease by the Developer/Owner. The Developer/Owner does not warrant or assume any liability or responsibility for the accuracy or completeness of any information contained herein. Project presently financed by Aditya Birla Finance Limited (ABFL) & Aditya Birla Housing Finance Limited (ABHFL) and NOC / permission of Aditya Birla Finance Limited (ABFL) & Aditya Birla Housing Finance Limited (ABHFL) will be obtained for sale of property, if required. This electronic/printed material has been created keeping in mind the provisions of the Real Estate (Regulation and Development) Act, 2016 (RERA) applicable for projects in Maharashtra. You are required to verify all the details, including area, amenities, services, terms of sales and payments and other relevant terms independently with the Developer's sales team only, by physically visiting the project site and the authorised website of RERA. You are requested NOT to visit any unauthorized or unverified website/broker (online/offline) to receive any information about any projects of the Developer and/or its sister concerns.

Maha RERA No. P5170004574 for Runwal Eirene - Part 1. Available on Website: [www.maharera.mahaonline.gov.in](http://www.maharera.mahaonline.gov.in)



Disclaimer: The images and other details herein are only indicative. The Developer / Owner reserves the right to change any or all of these in the interest of the development, as per provision of law. Artist's Impressions are used to illustrate amenities, specifications, images and other details. Tolerance of +/- 3% is possible in the unit areas on account of design and construction variances. All brands stated are subject to final decision of the project architect. This electronic/printed material does not constitute an offer and/or contract of any type between the Developer/Owner and the recipient. No booking or allotment shall be deemed to have been made on the basis of this electronic/printed material. Any Purchaser / Lessee of this development shall be governed by the terms and conditions of the agreement for sale/lease entered into between the parties, and no details mentioned in this electronic / printed material shall in any way govern such transactions unless as may be otherwise expressly provided in the agreement for sale/lease by the Developer/Owner. The Developer/Owner does not warrant or assume any liability or responsibility for the accuracy or completeness of any information contained herein. Project presently financed by Aditya Birla Finance Limited (ABFL) & Aditya Birla Housing Finance Limited (ABHFL) and NOC / permission of Aditya Birla Finance Limited (ABFL) & Aditya Birla Housing Finance Limited (ABHFL) will be obtained for sale of property, if required. This electronic/printed material has been created keeping in mind the provisions of the Real Estate (Regulation and Development) Act, 2016 (RERA) applicable for projects in Maharashtra. You are required to verify all the details, including area, amenities, services, terms of sales and payments and other relevant terms independently with the Developer's sales team only, by physically visiting the project site and the authorised website of RERA. You are requested NOT to visit any unauthorized or unverified website/broker (online/offline) to receive any information about any projects of the Developer and/or its sister concerns.

**TOWER - 6C**  
**2 BHK UNIT PLAN (TYPE - 01)**



**TOWER - 6C**  
**2 BHK UNIT PLAN (TYPE - 02)**



Maha RERA No. P51700004574 for Runwal Eirene - Part 1. Available on Website: [www.maharera.mahaonline.gov.in](http://www.maharera.mahaonline.gov.in)



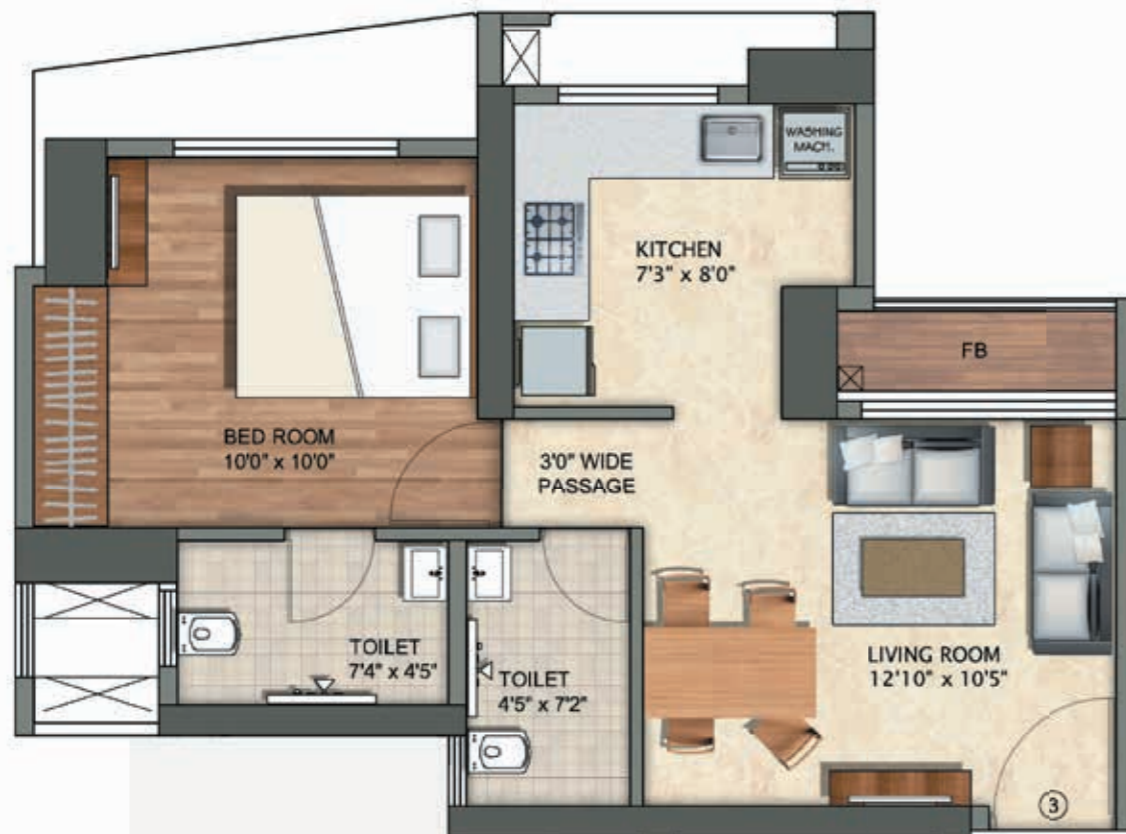
Disclaimer: The images and other details herein are only indicative. The Developer / Owner reserves the right to change any or all of these in the interest of the development, as per provision of law. Artist's Impressions are used to illustrate amenities, specifications, images and other details. Tolerance of +/- 3% is possible in the unit areas on account of design and construction variances. All brands stated are subject to final decision of the project architect. This electronic/printed material does not constitute an offer and/or contract of any type between the Developer/Owner and the recipient. No booking or allotment shall be deemed to have been made on the basis of this electronic/printed material. Any Purchaser / Lessee of this development shall be governed by the terms and conditions of the agreement for sale/lease entered into between the parties, and no details mentioned in this electronic / printed material shall in any way govern such transactions unless as may be otherwise expressly provided in the agreement for sale/lease by the Developer/Owner. The Developer/Owner does not warrant or assume any liability or responsibility for the accuracy or completeness of any information contained herein. Project presently financed by Aditya Birla Finance Limited (ABFL) & Aditya Birla Housing Finance Limited (ABHFL) and NOC / permission of Aditya Birla Finance Limited (ABFL) & Aditya Birla Housing Finance Limited (ABHFL) will be obtained for sale of property, if required. This electronic/printed material has been created keeping in mind the provisions of the Real Estate (Regulation and Development) Act, 2016 (RERA) applicable for projects in Maharashtra. You are required to verify all the details, including area, amenities, services, terms of sales and payments and other relevant terms independently with the Developer's sales team only, by physically visiting the project site and the authorised website of RERA. You are requested NOT to visit any unauthorized or unverified website/broker (online/offline) to receive any information about any projects of the Developer and/or its sister concerns.

Maha RERA No. P51700004574 for Runwal Eirene - Part 1. Available on Website: [www.maharera.mahaonline.gov.in](http://www.maharera.mahaonline.gov.in)



Disclaimer: The images and other details herein are only indicative. The Developer / Owner reserves the right to change any or all of these in the interest of the development, as per provision of law. Artist's Impressions are used to illustrate amenities, specifications, images and other details. Tolerance of +/- 3% is possible in the unit areas on account of design and construction variances. All brands stated are subject to final decision of the project architect. This electronic/printed material does not constitute an offer and/or contract of any type between the Developer/Owner and the recipient. No booking or allotment shall be deemed to have been made on the basis of this electronic/printed material. Any Purchaser / Lessee of this development shall be governed by the terms and conditions of the agreement for sale/lease entered into between the parties, and no details mentioned in this electronic / printed material shall in any way govern such transactions unless as may be otherwise expressly provided in the agreement for sale/lease by the Developer/Owner. The Developer/Owner does not warrant or assume any liability or responsibility for the accuracy or completeness of any information contained herein. Project presently financed by Aditya Birla Finance Limited (ABFL) & Aditya Birla Housing Finance Limited (ABHFL) and NOC / permission of Aditya Birla Finance Limited (ABFL) & Aditya Birla Housing Finance Limited (ABHFL) will be obtained for sale of property, if required. This electronic/printed material has been created keeping in mind the provisions of the Real Estate (Regulation and Development) Act, 2016 (RERA) applicable for projects in Maharashtra. You are required to verify all the details, including area, amenities, services, terms of sales and payments and other relevant terms independently with the Developer's sales team only, by physically visiting the project site and the authorised website of RERA. You are requested NOT to visit any unauthorized or unverified website/broker (online/offline) to receive any information about any projects of the Developer and/or its sister concerns.

**TOWER - 6C**  
**1 BHK UNIT PLAN (TYPE - 03)**



**TOWER - 6C**  
**1 BHK UNIT PLAN (TYPE - 04)**



Maha RERA No. P51700004574 for Runwal Eirene - Part 1. Available on Website: [www.maharera.mahaonline.gov.in](http://www.maharera.mahaonline.gov.in)



Disclaimer: The images and other details herein are only indicative. The Developer / Owner reserves the right to change any or all of these in the interest of the development, as per provision of law. Artist's Impressions are used to illustrate amenities, specifications, images and other details. Tolerance of +/- 3% is possible in the unit areas on account of design and construction variances. All brands stated are subject to final decision of the project architect. This electronic/printed material does not constitute an offer and/or contract of any type between the Developer/Owner and the recipient. No booking or allotment shall be deemed to have been made on the basis of this electronic/printed material. Any Purchaser / Lessee of this development shall be governed by the terms and conditions of the agreement for sale/lease entered into between the parties, and no details mentioned in this electronic / printed material shall in any way govern such transactions unless as may be otherwise expressly provided in the agreement for sale/lease by the Developer/Owner. The Developer/Owner does not warrant or assume any liability or responsibility for the accuracy or completeness of any information contained herein. Project presently financed by Aditya Birla Finance Limited (ABFL) & Aditya Birla Housing Finance Limited (ABHFL) and NOC / permission of Aditya Birla Finance Limited (ABFL) & Aditya Birla Housing Finance Limited (ABHFL) will be obtained for sale of property, if required. This electronic/printed material has been created keeping in mind the provisions of the Real Estate (Regulation and Development) Act, 2016 (RERA) applicable for projects in Maharashtra. You are required to verify all the details, including area, amenities, services, terms of sales and payments and other relevant terms independently with the Developer's sales team only, by physically visiting the project site and the authorised website of RERA. You are requested NOT to visit any unauthorized or unverified website/broker (online/offline) to receive any information about any projects of the Developer and/or its sister concerns.

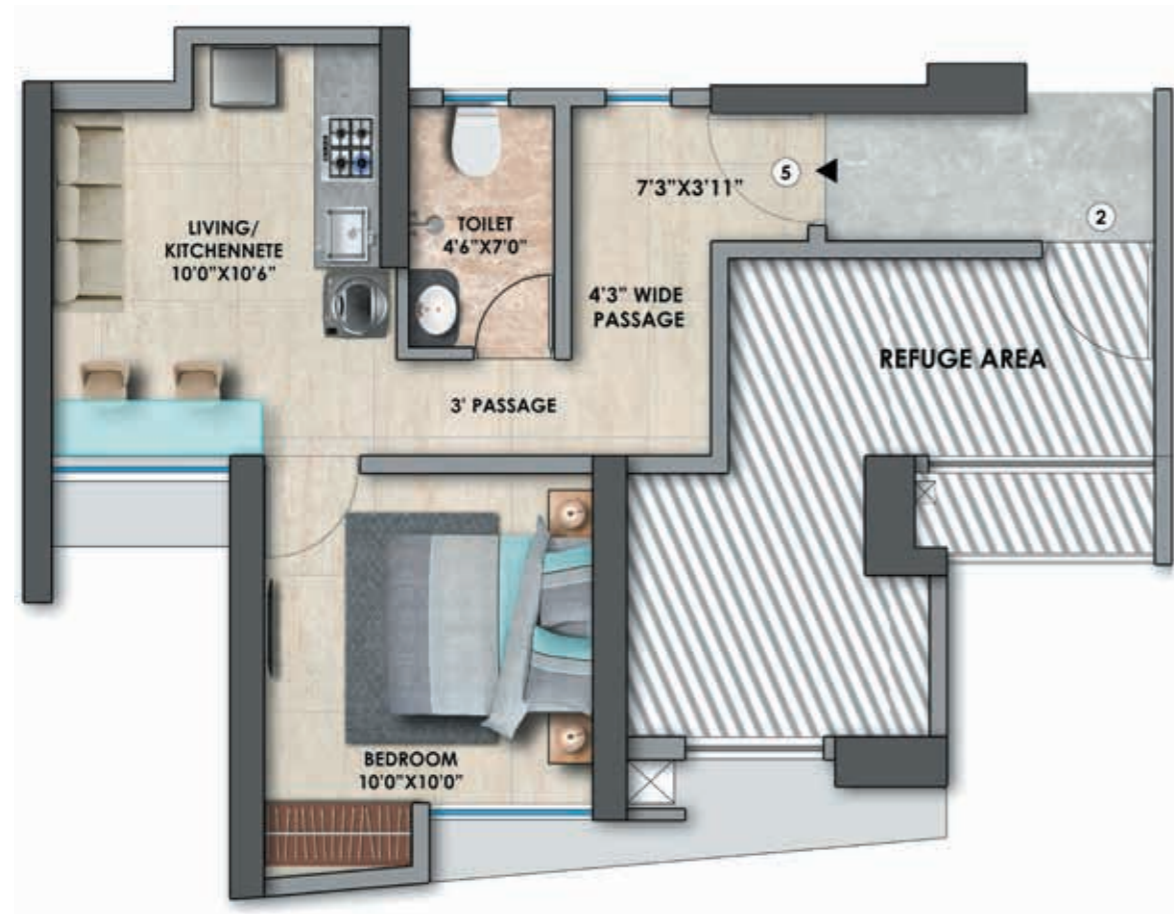
Maha RERA No. P51700004574 for Runwal Eirene - Part 1. Available on Website: [www.maharera.mahaonline.gov.in](http://www.maharera.mahaonline.gov.in)



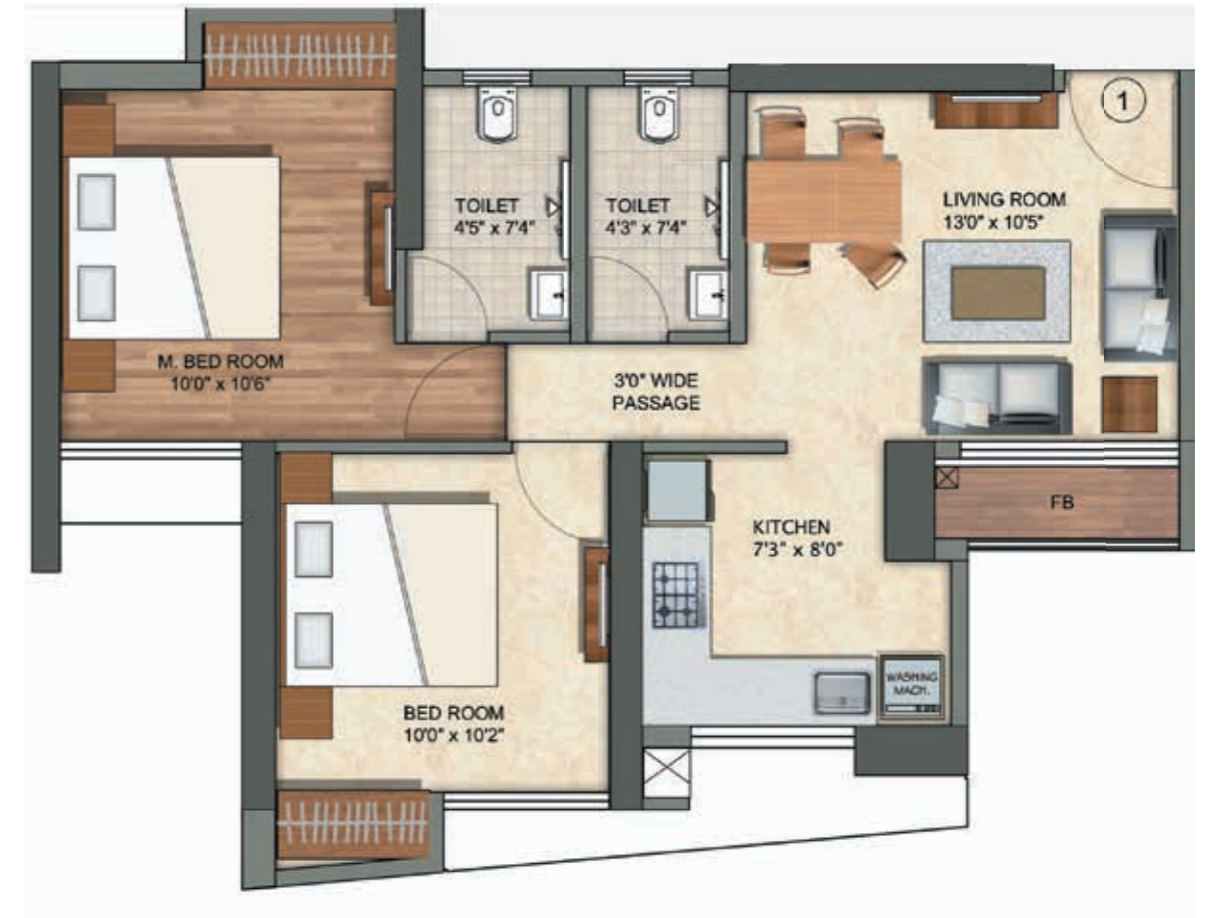
Disclaimer: The images and other details herein are only indicative. The Developer / Owner reserves the right to change any or all of these in the interest of the development, as per provision of law. Artist's Impressions are used to illustrate amenities, specifications, images and other details. Tolerance of +/- 3% is possible in the unit areas on account of design and construction variances. All brands stated are subject to final decision of the project architect. This electronic/printed material does not constitute an offer and/or contract of any type between the Developer/Owner and the recipient. No booking or allotment shall be deemed to have been made on the basis of this electronic/printed material. Any Purchaser / Lessee of this development shall be governed by the terms and conditions of the agreement for sale/lease entered into between the parties, and no details mentioned in this electronic / printed material shall in any way govern such transactions unless as may be otherwise expressly provided in the agreement for sale/lease by the Developer/Owner. The Developer/Owner does not warrant or assume any liability or responsibility for the accuracy or completeness of any information contained herein. Project presently financed by Aditya Birla Finance Limited (ABFL) & Aditya Birla Housing Finance Limited (ABHFL) and NOC / permission of Aditya Birla Finance Limited (ABFL) & Aditya Birla Housing Finance Limited (ABHFL) will be obtained for sale of property, if required. This electronic/printed material has been created keeping in mind the provisions of the Real Estate (Regulation and Development) Act, 2016 (RERA) applicable for projects in Maharashtra. You are required to verify all the details, including area, amenities, services, terms of sales and payments and other relevant terms independently with the Developer's sales team only, by physically visiting the project site and the authorised website of RERA. You are requested NOT to visit any unauthorized or unverified website/broker (online/offline) to receive any information about any projects of the Developer and/or its sister concerns.



**TOWER - 6C**  
**1 BHK UNIT PLAN (TYPE - 05)**



**TOWER - 6D**  
**2 BHK UNIT PLAN (TYPE - 01)**



Maha RERA No. P51700004574 for Runwal Eirene - Part 1. Available on Website: [www.maharera.mahaonline.gov.in](http://www.maharera.mahaonline.gov.in)



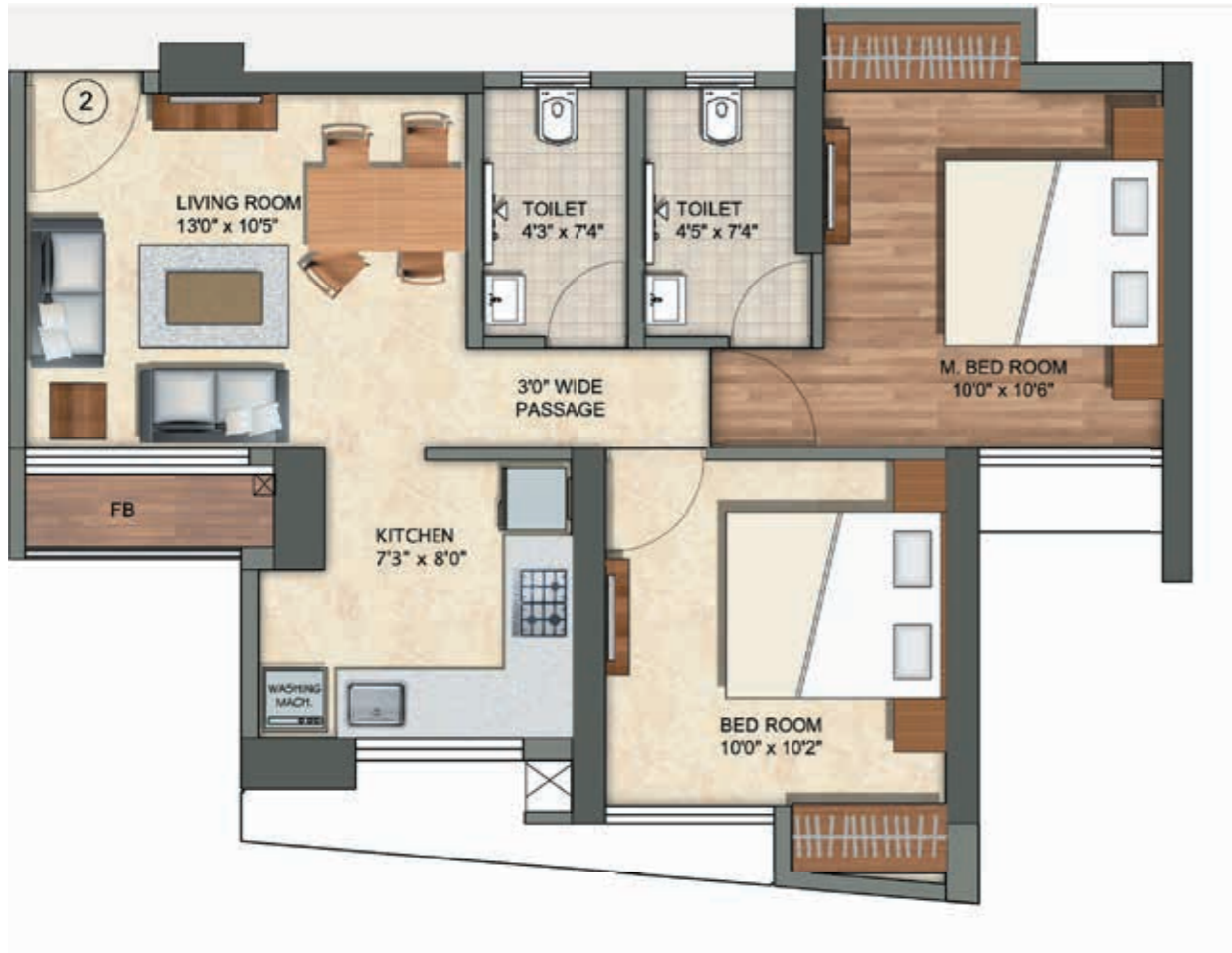
Disclaimer: The images and other details herein are only indicative. The Developer / Owner reserves the right to change any or all of these in the interest of the development, as per provision of law. Artist's Impressions are used to illustrate amenities, specifications, images and other details. Tolerance of +/- 3% is possible in the unit areas on account of design and construction variances. All brands stated are subject to final decision of the project architect. This electronic/printed material does not constitute an offer and/or contract of any type between the Developer/Owner and the recipient. No booking or allotment shall be deemed to have been made on the basis of this electronic/printed material. Any Purchaser / Lessee of this development shall be governed by the terms and conditions of the agreement for sale/lease entered into between the parties, and no details mentioned in this electronic / printed material shall in any way govern such transactions unless as may be otherwise expressly provided in the agreement for sale/lease by the Developer/Owner. The Developer/Owner does not warrant or assume any liability or responsibility for the accuracy or completeness of any information contained herein. Project presently financed by Aditya Birla Finance Limited (ABFL) & Aditya Birla Housing Finance Limited (ABHFL) and NOC / permission of Aditya Birla Finance Limited (ABFL) & Aditya Birla Housing Finance Limited (ABHFL) will be obtained for sale of property, if required. This electronic/printed material has been created keeping in mind the provisions of the Real Estate (Regulation and Development) Act, 2016 (RERA) applicable for projects in Maharashtra. You are required to verify all the details, including area, amenities, services, terms of sales and payments and other relevant terms independently with the Developer's sales team only, by physically visiting the project site and the authorised website of RERA. You are requested NOT to visit any unauthorized or unverified website/broker (online/offline) to receive any information about any projects of the Developer and/or its sister concerns.

Maha RERA No. P51700004574 for Runwal Eirene - Part 1. Available on Website: [www.maharera.mahaonline.gov.in](http://www.maharera.mahaonline.gov.in)

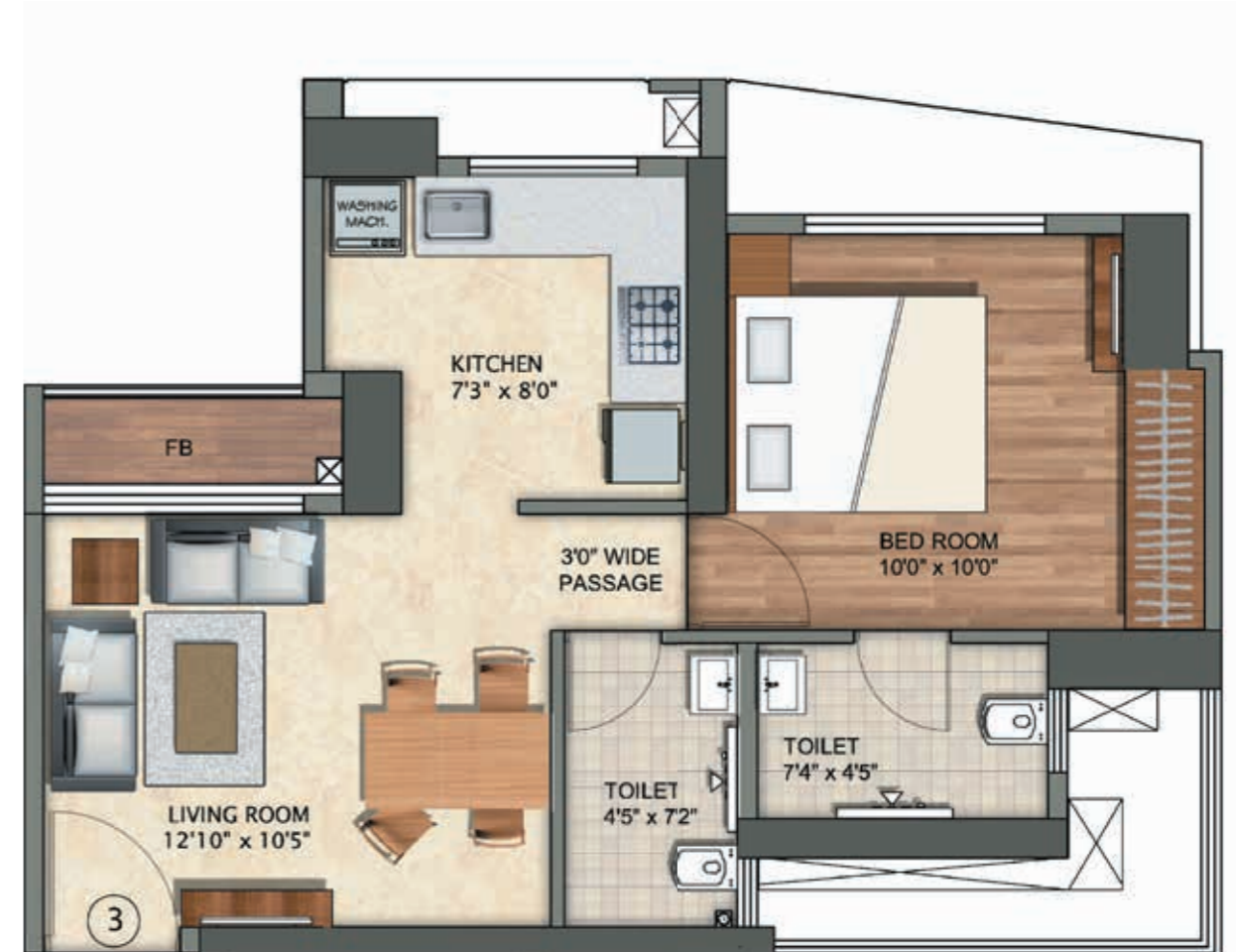


Disclaimer: The images and other details herein are only indicative. The Developer / Owner reserves the right to change any or all of these in the interest of the development, as per provision of law. Artist's Impressions are used to illustrate amenities, specifications, images and other details. Tolerance of +/- 3% is possible in the unit areas on account of design and construction variances. All brands stated are subject to final decision of the project architect. This electronic/printed material does not constitute an offer and/or contract of any type between the Developer/Owner and the recipient. No booking or allotment shall be deemed to have been made on the basis of this electronic/printed material. Any Purchaser / Lessee of this development shall be governed by the terms and conditions of the agreement for sale/lease entered into between the parties, and no details mentioned in this electronic / printed material shall in any way govern such transactions unless as may be otherwise expressly provided in the agreement for sale/lease by the Developer/Owner. The Developer/Owner does not warrant or assume any liability or responsibility for the accuracy or completeness of any information contained herein. Project presently financed by Aditya Birla Finance Limited (ABFL) & Aditya Birla Housing Finance Limited (ABHFL) and NOC / permission of Aditya Birla Finance Limited (ABFL) & Aditya Birla Housing Finance Limited (ABHFL) will be obtained for sale of property, if required. This electronic/printed material has been created keeping in mind the provisions of the Real Estate (Regulation and Development) Act, 2016 (RERA) applicable for projects in Maharashtra. You are required to verify all the details, including area, amenities, services, terms of sales and payments and other relevant terms independently with the Developer's sales team only, by physically visiting the project site and the authorised website of RERA. You are requested NOT to visit any unauthorized or unverified website/broker (online/offline) to receive any information about any projects of the Developer and/or its sister concerns.

**TOWER - 6D**  
**2 BHK UNIT PLAN (TYPE - 02)**



**TOWER - 6D**  
**1 BHK UNIT PLAN (TYPE - 03)**



Maha RERA No. P51700004574 for Runwal Eirene - Part 1. Available on Website: [www.maharera.mahaonline.gov.in](http://www.maharera.mahaonline.gov.in)



Disclaimer: The images and other details herein are only indicative. The Developer / Owner reserves the right to change any or all of these in the interest of the development, as per provision of law. Artist's Impressions are used to illustrate amenities, specifications, images and other details. Tolerance of +/- 3% is possible in the unit areas on account of design and construction variances. All brands stated are subject to final decision of the project architect. This electronic/printed material does not constitute an offer and/or contract of any type between the Developer/Owner and the recipient. No booking or allotment shall be deemed to have been made on the basis of this electronic/printed material. Any Purchaser / Lessee of this development shall be governed by the terms and conditions of the agreement for sale/lease entered into between the parties, and no details mentioned in this electronic / printed material shall in any way govern such transactions unless as may be otherwise expressly provided in the agreement for sale/lease by the Developer/Owner. The Developer/Owner does not warrant or assume any liability or responsibility for the accuracy or completeness of any information contained herein. Project presently financed by Aditya Birla Finance Limited (ABFL) & Aditya Birla Housing Finance Limited (ABHFL) and NOC / permission of Aditya Birla Finance Limited (ABFL) & Aditya Birla Housing Finance Limited (ABHFL) will be obtained for sale of property, if required. This electronic/printed material has been created keeping in mind the provisions of the Real Estate (Regulation and Development) Act, 2016 (RERA) applicable for projects in Maharashtra. You are required to verify all the details, including area, amenities, services, terms of sales and payments and other relevant terms independently with the Developer's sales team only, by physically visiting the project site and the authorised website of RERA. You are requested NOT to visit any unauthorized or unverified website/broker (online/offline) to receive any information about any projects of the Developer and/or its sister concerns.

Maha RERA No. P51700004574 for Runwal Eirene - Part 1. Available on Website: [www.maharera.mahaonline.gov.in](http://www.maharera.mahaonline.gov.in)

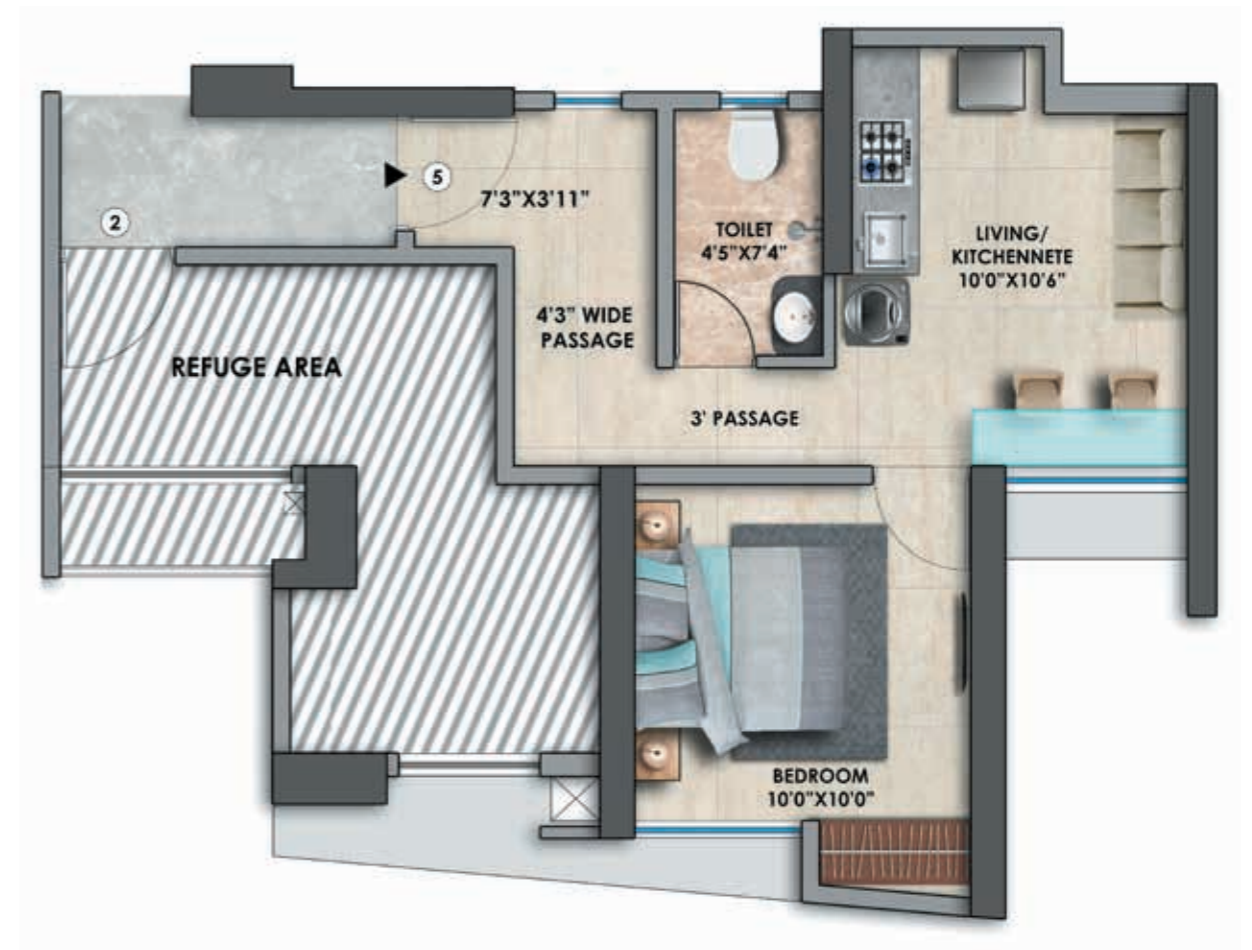


Disclaimer: The images and other details herein are only indicative. The Developer / Owner reserves the right to change any or all of these in the interest of the development, as per provision of law. Artist's Impressions are used to illustrate amenities, specifications, images and other details. Tolerance of +/- 3% is possible in the unit areas on account of design and construction variances. All brands stated are subject to final decision of the project architect. This electronic/printed material does not constitute an offer and/or contract of any type between the Developer/Owner and the recipient. No booking or allotment shall be deemed to have been made on the basis of this electronic/printed material. Any Purchaser / Lessee of this development shall be governed by the terms and conditions of the agreement for sale/lease entered into between the parties, and no details mentioned in this electronic / printed material shall in any way govern such transactions unless as may be otherwise expressly provided in the agreement for sale/lease by the Developer/Owner. The Developer/Owner does not warrant or assume any liability or responsibility for the accuracy or completeness of any information contained herein. Project presently financed by Aditya Birla Finance Limited (ABFL) & Aditya Birla Housing Finance Limited (ABHFL) and NOC / permission of Aditya Birla Finance Limited (ABFL) & Aditya Birla Housing Finance Limited (ABHFL) will be obtained for sale of property, if required. This electronic/printed material has been created keeping in mind the provisions of the Real Estate (Regulation and Development) Act, 2016 (RERA) applicable for projects in Maharashtra. You are required to verify all the details, including area, amenities, services, terms of sales and payments and other relevant terms independently with the Developer's sales team only, by physically visiting the project site and the authorised website of RERA. You are requested NOT to visit any unauthorized or unverified website/broker (online/offline) to receive any information about any projects of the Developer and/or its sister concerns.

**TOWER - 6D**  
**2 BHK UNIT PLAN (TYPE - 04)**



**TOWER - 6D**  
**1 BHK UNIT PLAN (TYPE - 05)**



Maha RERA No. P51700004574 for Runwal Eirene - Part 1. Available on Website: [www.maharera.mahaonline.gov.in](http://www.maharera.mahaonline.gov.in)



Disclaimer: The images and other details herein are only indicative. The Developer / Owner reserves the right to change any or all of these in the interest of the development, as per provision of law. Artist's Impressions are used to illustrate amenities, specifications, images and other details. Tolerance of +/- 3% is possible in the unit areas on account of design and construction variances. All brands stated are subject to final decision of the project architect. This electronic/printed material does not constitute an offer and/or contract of any type between the Developer/Owner and the recipient. No booking or allotment shall be deemed to have been made on the basis of this electronic/printed material. Any Purchaser / Lessee of this development shall be governed by the terms and conditions of the agreement for sale/lease entered into between the parties, and no details mentioned in this electronic / printed material shall in any way govern such transactions unless as may be otherwise expressly provided in the agreement for sale/lease by the Developer/Owner. The Developer/Owner does not warrant or assume any liability or responsibility for the accuracy or completeness of any information contained herein. Project presently financed by Aditya Birla Finance Limited (ABFL) & Aditya Birla Housing Finance Limited (ABHFL) and NOC / permission of Aditya Birla Finance Limited (ABFL) & Aditya Birla Housing Finance Limited (ABHFL) will be obtained for sale of property, if required. This electronic/printed material has been created keeping in mind the provisions of the Real Estate (Regulation and Development) Act, 2016 (RERA) applicable for projects in Maharashtra. You are required to verify all the details, including area, amenities, services, terms of sales and payments and other relevant terms independently with the Developer's sales team only, by physically visiting the project site and the authorised website of RERA. You are requested NOT to visit any unauthorized or unverified website/broker (online/offline) to receive any information about any projects of the Developer and/or its sister concerns.

Maha RERA No. P51700004574 for Runwal Eirene - Part 1. Available on Website: [www.maharera.mahaonline.gov.in](http://www.maharera.mahaonline.gov.in)



Disclaimer: The images and other details herein are only indicative. The Developer / Owner reserves the right to change any or all of these in the interest of the development, as per provision of law. Artist's Impressions are used to illustrate amenities, specifications, images and other details. Tolerance of +/- 3% is possible in the unit areas on account of design and construction variances. All brands stated are subject to final decision of the project architect. This electronic/printed material does not constitute an offer and/or contract of any type between the Developer/Owner and the recipient. No booking or allotment shall be deemed to have been made on the basis of this electronic/printed material. Any Purchaser / Lessee of this development shall be governed by the terms and conditions of the agreement for sale/lease entered into between the parties, and no details mentioned in this electronic / printed material shall in any way govern such transactions unless as may be otherwise expressly provided in the agreement for sale/lease by the Developer/Owner. The Developer/Owner does not warrant or assume any liability or responsibility for the accuracy or completeness of any information contained herein. Project presently financed by Aditya Birla Finance Limited (ABFL) & Aditya Birla Housing Finance Limited (ABHFL) and NOC / permission of Aditya Birla Finance Limited (ABFL) & Aditya Birla Housing Finance Limited (ABHFL) will be obtained for sale of property, if required. This electronic/printed material has been created keeping in mind the provisions of the Real Estate (Regulation and Development) Act, 2016 (RERA) applicable for projects in Maharashtra. You are required to verify all the details, including area, amenities, services, terms of sales and payments and other relevant terms independently with the Developer's sales team only, by physically visiting the project site and the authorised website of RERA. You are requested NOT to visit any unauthorized or unverified website/broker (online/offline) to receive any information about any projects of the Developer and/or its sister concerns.



🌿 LAUNCHING 🌿

## READY TO MOVE IN 1 & 2 BHK GARDEN RESIDNCES

Make green living a way of life with our exclusive garden apartments. Get your very own private patch where you can grow your favourite flowers, fruits, vegetables or ornamental plants. Live the most relaxing and immersive experience of owning a garden. With Runwal it's all possible!

STOCK IMAGE

# RUNWAL Legacy

42+ 

PROJECTS DELIVERED  
24 PROJECTS UNDER  
CONSTRUCTION

35+ 

AWARDS  
& ACCOLADES

REALTY PLUS EXCELLENCE AWARD (WEST),  
2016 | ULTRA LUXURY RESIDENTIAL PROJECT, 2020 |  
BEST REAL ESTATE COMPANY OF THE YEAR, 2021

35k+ 

HAPPY FAMILIES  
HAVE CHOSEN THEIR DREAM HOME AT  
RUNWAL GROUP

45+ 

YEARS OF LEGACY  
PIONEERS IN ORGANIZED RETAIL &  
RESIDENTIAL REAL ESTATE