

EVERYBODY DREAMS.  
ONLY A FEW LIVE THEIRS.

**RUNWAL**  
**ELEGANTE**

LUXURY RESIDENCES

LOKHANDWALA,  
ANDHERI (W)



Stock image used for representation purpose only

*Some go for walks in the park.*

**FEW TAKE A STROLL  
AMIDST THE CLOUDS.**



*Some travel great distances  
to watch the perfect sunset.*

**FEW SIMPLY  
WALK UP TO  
THEIR DECKS.**



Stock image used for representation purpose only

*Some wade through traffic to reach their clubs.*

**FEW TAKE THE ELEVATOR DOWN  
TO THEIR VERY OWN.**



*Some travel far  
to have a great time.*

**FEW STAY  
CONNECTED  
TO ALL THAT  
THEY LOVE.**



Artistic Impression

P R E S E N T I N G

# RUNWAL ELEGANTE

L U X U R Y R E S I D E N C E S

*Runwal Elegante is a testimony of the high life, with residences that are a class apart.  
It offers luxury residences nestled in the enviable location of Lokhandwala, Andheri West.  
Introducing, the first ever rooftop deck - The Galileo Deck in India that connects the 3 towers 400  
feet above the sea level. Along with ultra - luxurious lifestyle amenities and services,  
we're serving supreme comfort to you on a platter.  
Come, live your dream.*

P R E S E N T I N G I N D I A ' S F I R S T

# GALILEO DECK

*Crowning the skyline of Lokhandwala, 400 ft above the sea level is India's first ever  
Roof Deck - The Galileo Deck. Jog or Stroll, gaze or stargaze,  
you have your very own space high up in the sky!*

*Take in a great sunset, take in the breeze, and you can even have your very own  
rooftop party here.*

*You're literally experiencing the HIGH LIFE!*





Artistic Impression



Artistic Impression

P R E S E N T I N G

# THE LIFESTYLE AMENITIES LEVEL

*Stroll along the expansive lifestyle amenity level and get a view of the horizon like nowhere else or pick a cosy corner at the reading lounge to spend your time.*

*Take a dip in the scintillating swimming pool or lounge away the evening at Club Estella.*

*Runwal Elegante pampers you like no other!*



Stock image used for representation purpose only

## DISCOVER THE HIGHLIFE.

*Enter the world of luxury. Drive your way up to the highlife at Runwal Elegante.*



Stock image used for representation purpose only

## GRANDIOSE LOBBY.

*Tell a story of perfection. Starting with the double-height entrance and elevator lobby.*



Artistic Impression

# LUXURY PROVIDES EVERY AMENITY

*{1} Clubhouse {2} Pavilion {3} Swimming pool {4} Kids' pool  
{5} Café space {6} Poolside deck {7} Seating area along the pool {8} Walking track  
{9} Lawns {10} Reading lounge {11} Tranquil seating space {12} Seniors' lounge  
{13} Open multi-sports court {14} Covered play space {15} Yoga pavilion {16} Skating rink  
{17} Box cricket {18} Half basketball court {19} Kids' play area {20} Party space {21} Kids-friendly flooring*



Artistic Impression



# ALL THE LUXURIES CLUBBED UNDER ONE ROOF

*Our luxurious Clubhouse gives you more than you can imagine!  
With state-of-the-art amenities, you'll never spend a day bored,  
ever again.*

- *Badminton / Multi-purpose court*
  - *Squash court* • *Gymnasium*
  - *Steam room* • *Green terrace*
  - *AV room* • *Lounge*



Stock images used for representation purpose only

## FUNSPACES - INTERACTIVE ZONES SPECIALLY DESIGNED FOR KIDS AND TEENS.

*Half basket ball court | Skating rink | Reading lounge | Kids pool | Box cricket | Covered play area | AV room & many more.*



Stock images used for representation purpose only

# THE BUZZING NEIGHBOURHOOD

*Lokhandwala, Andheri West boasts of a glitzy and glamorous lifestyle.*

*The buzzing neighbourhood is home to the best in shopping, entertainment, fine dining, party hangouts and reputed educational institutions. With the best of music and Bollywood in the nearby vicinity, the place is a preferred address in Mumbai.*

## ***SOCIAL INFRASTRUCTURE***

*Western Express Highway – 3.4 Kms*

*International Airport – 8 Kms*

*Domestic Airport – 8.8 Kms*

## ***EDUCATIONAL INSTITUTIONS***

*Ryan Global School – 900 Mtrs*

*CP Goenka International School – 1.2 Kms*

*Oberoi International School – 4.5 Kms*

*Jamnabai Narsee School – 4.5 Kms*

## ***SHOPPING & ENTERTAINMENT***

*Infiniti Mall – 300 Mtrs*

*Citi Mall – 700 Mtrs*

*Fun Republic – 1 Km*

## ***HEALTH CARE***

*Kokilaben Dhirubhai Ambani Hospital – 1.9 Kms*

*Criti Care Hospital – 3.6 Kms*





# LUXURY IS IN THE DETAILS

## COMMON AREA FINISHES:

- *Grand entrance lobby finished in Italian Marble with false ceiling*
- *Elegantly designed lift lobbies*
- *Security camera coverage in common areas i.e. main lobby, stilt and parking areas*
- *Multi-level parking*
- *Professionally managed security*
- *Fire protection system*
- *D.G. backup for common areas and elevators*
- *High-speed elevator with auto rescue device*

## RESIDENCE FINISHES:

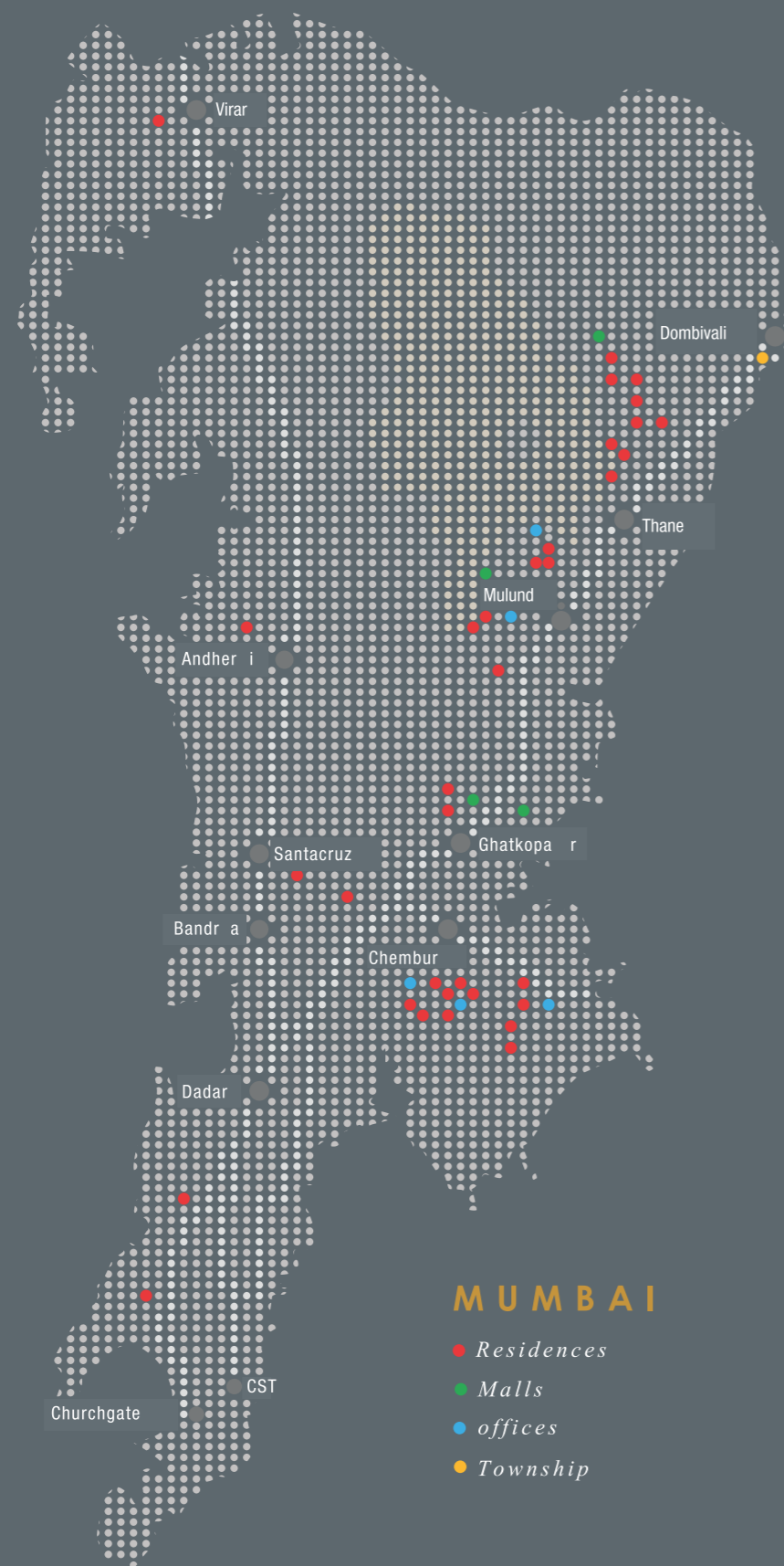
- *Marble flooring in living room & vitrified tiles in bedrooms*
- *Provision of air-conditioning*
- *Toughened glass & stainless steel railing*
- *System windows of reputed brand*
- *Granite kitchen platform, 2 feet height tile dado for service counter*
- *Stainless steel sink*
- *Combination of veneer & laminated door shutter with premium fittings*
- *Vitrified tile dado in bathrooms*
- *Premium bathroom fittings, fixtures and accessories*
- *Water heater*
- *Provision of exhaust fan in all toilets*
- *High-quality branded electrical fittings: Schneider Opal / Schneider Zencilo*
- *Home automation for select rooms*
- *Intercom connection in every residence with VDP*

# LUXURY NEVER CEASES TO AMAZE









## RUNWAL DEVELOPERS

*Established in 1978, the Runwal Developers is one of Mumbai's premier real estate developers, operating in the residential, commercial and organised retail verticals.*

*With a robust track record of 51 delivered projects, with 20,000 families living happily, the Group has continuously striven to keep the customer as a focal point in the designing, planning and construction of all its projects.*

*Today, the Group's steadfast focus on quality has led it to become an industry leader and a market-driven construction company, renowned for trust and quality, along with on-time delivery.*

## ONGOING PROJECTS

- *Runwal Anthurium*
- *Eirene*
- *Runwal Garden City - Dahlia*
- *Runwal Elegante*
- *MyCity, Dombivli*
- *The Residence*
- *Nirvana*
- *Runwal Pearl*
- *Runwal Elina*
- *Runwal Serene*
- *The Reserve*
- *Runwal Infinity*

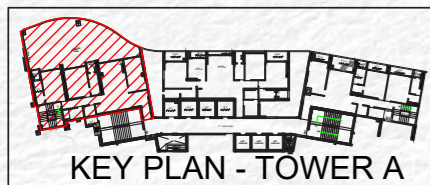
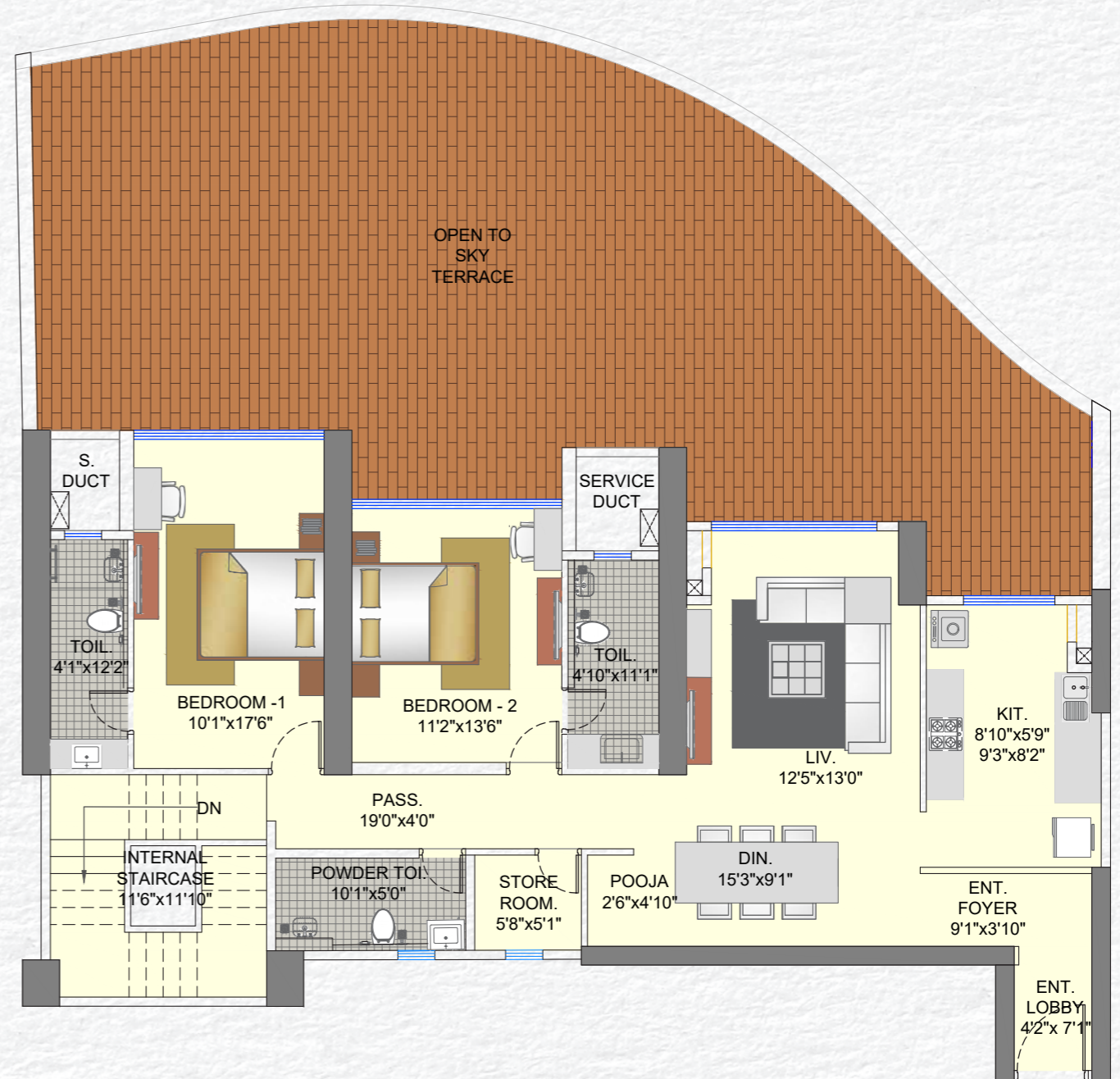
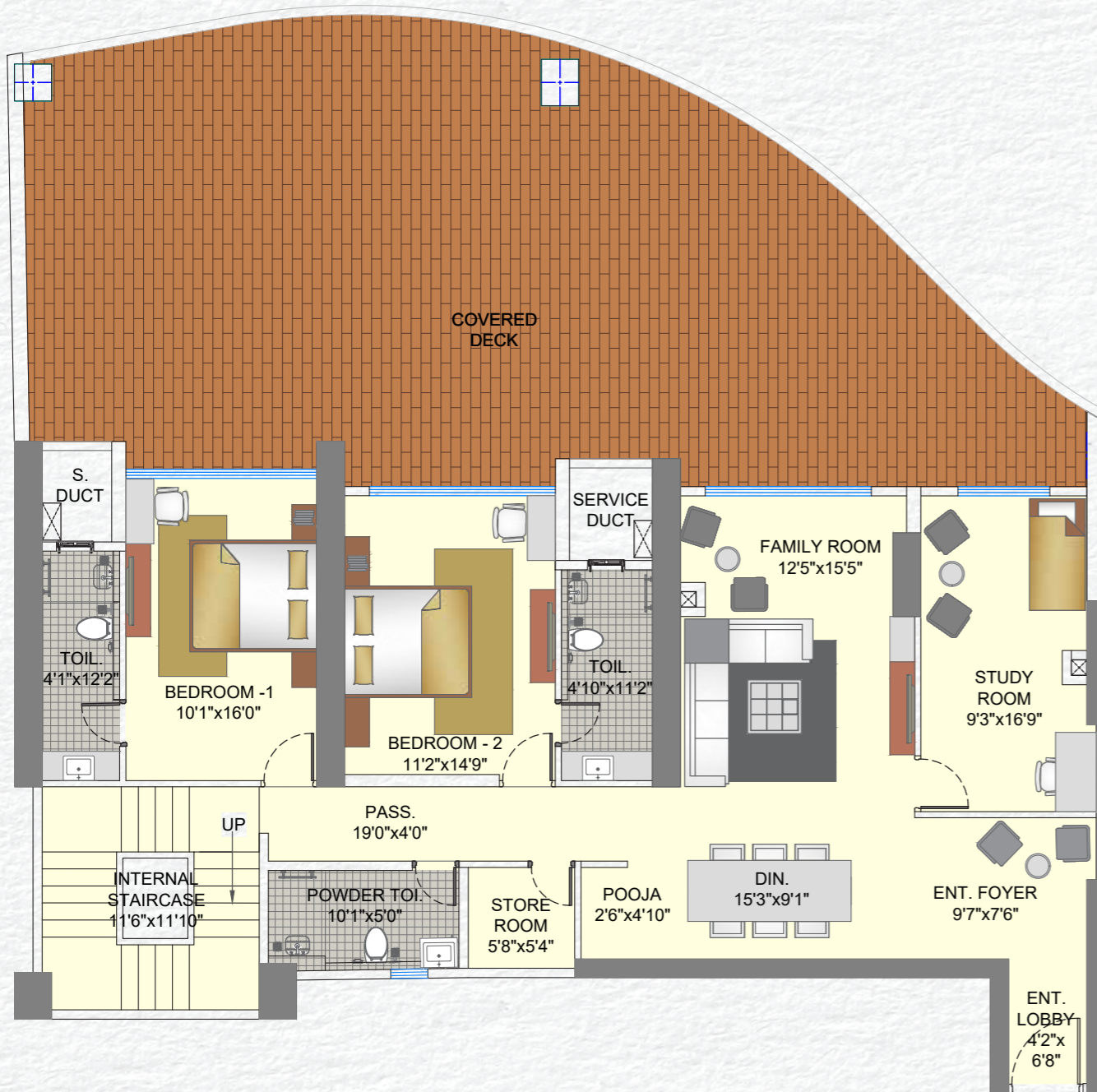
## MALLS

- *R City Mall, Ghatkopar*
- *R Mall, Mulund (W)*
- *R Mall, Thane*
- *R Odeon, Ghatkopar (E)*

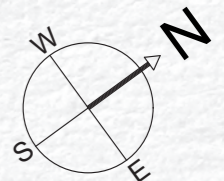
## OFFICES

- *R Square*
- *R City Offices*

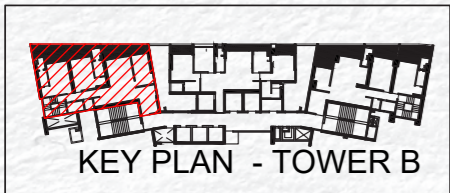
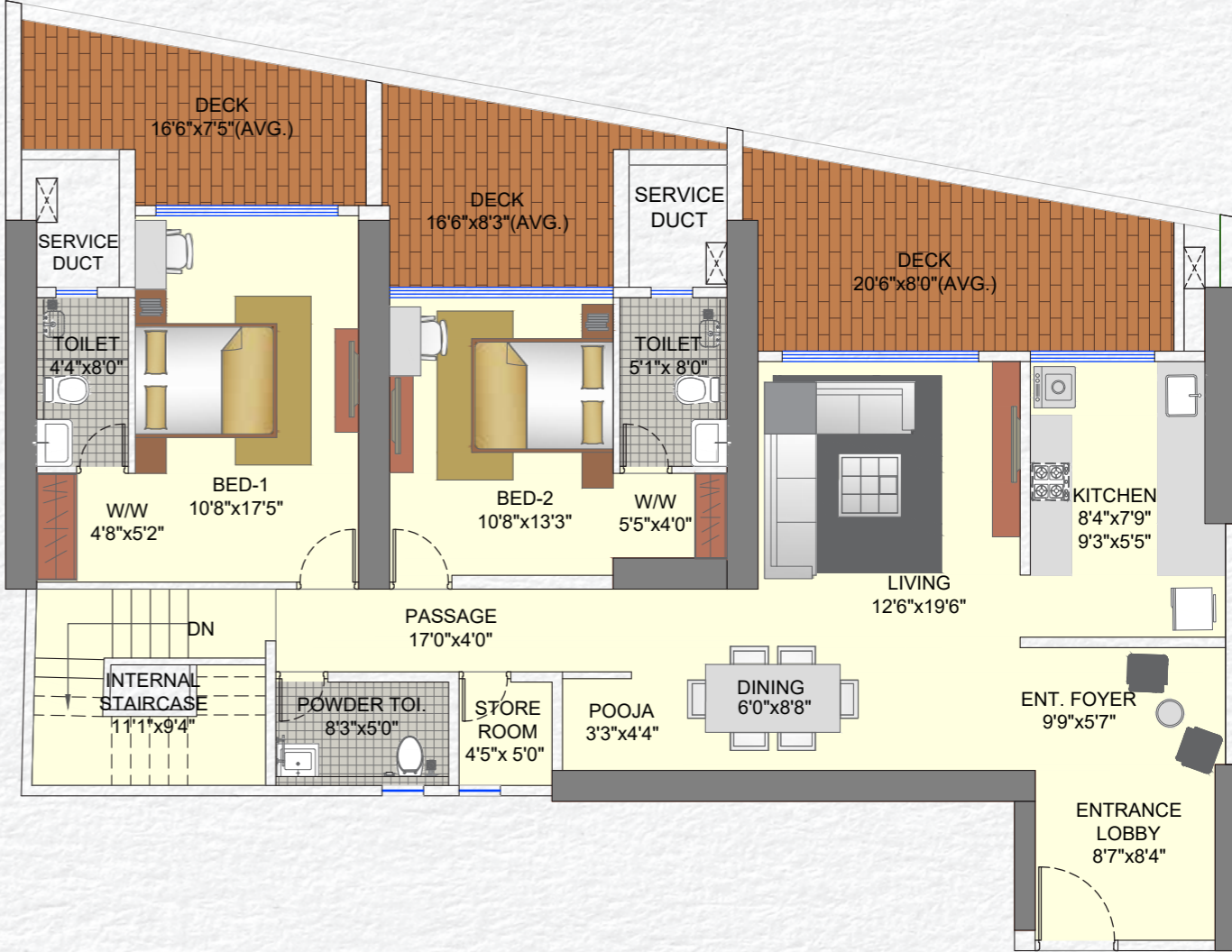
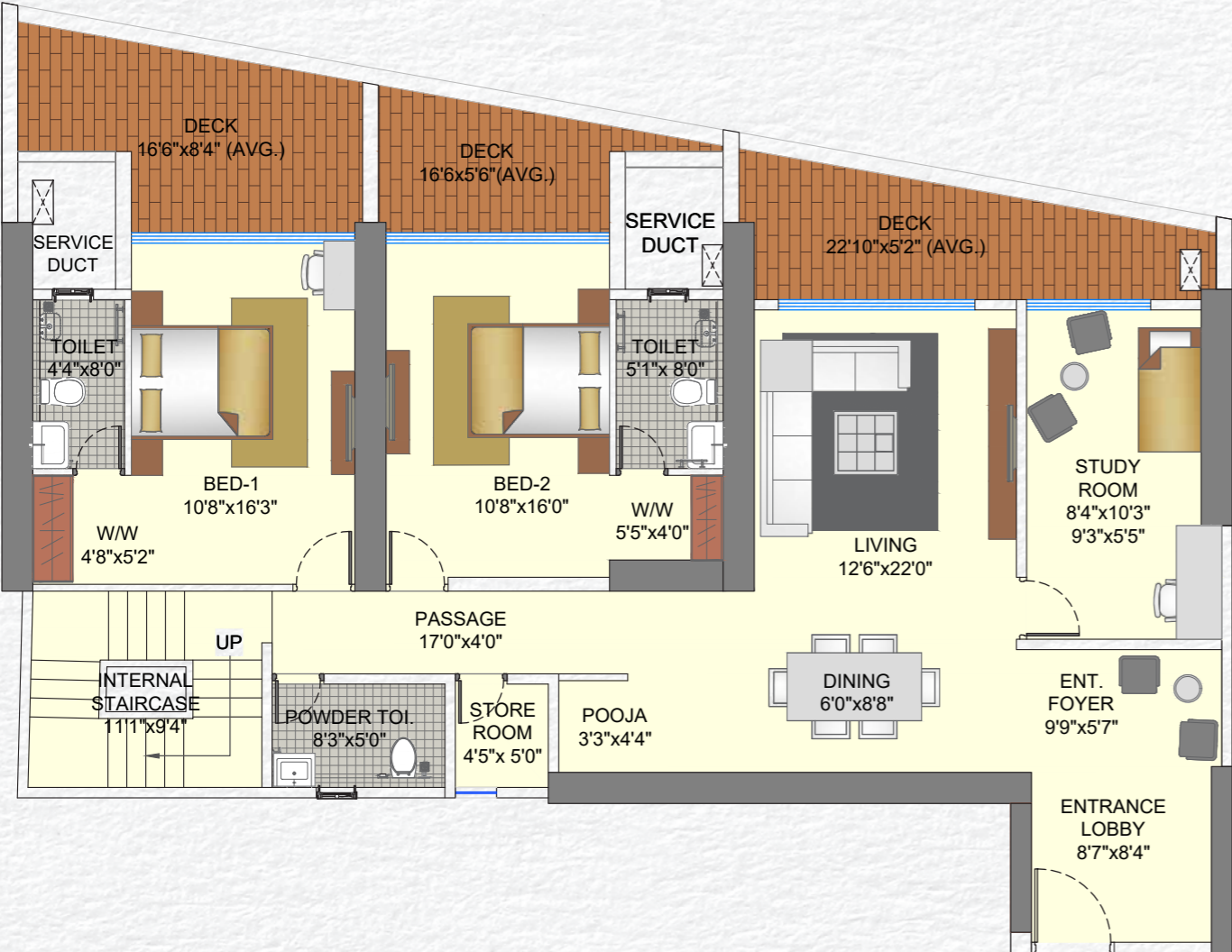
# Tower Elan (A) - 5 BHK Unit - P6-1



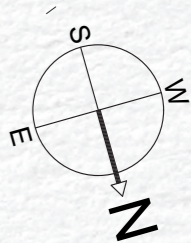
RERA CARPET	BALCONY	TOTAL
2753 sq.ft.	2184 sq.ft.	4937 sq.ft.



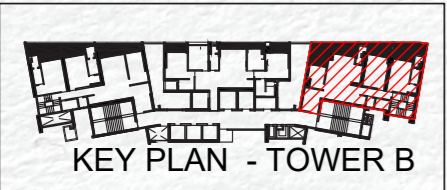
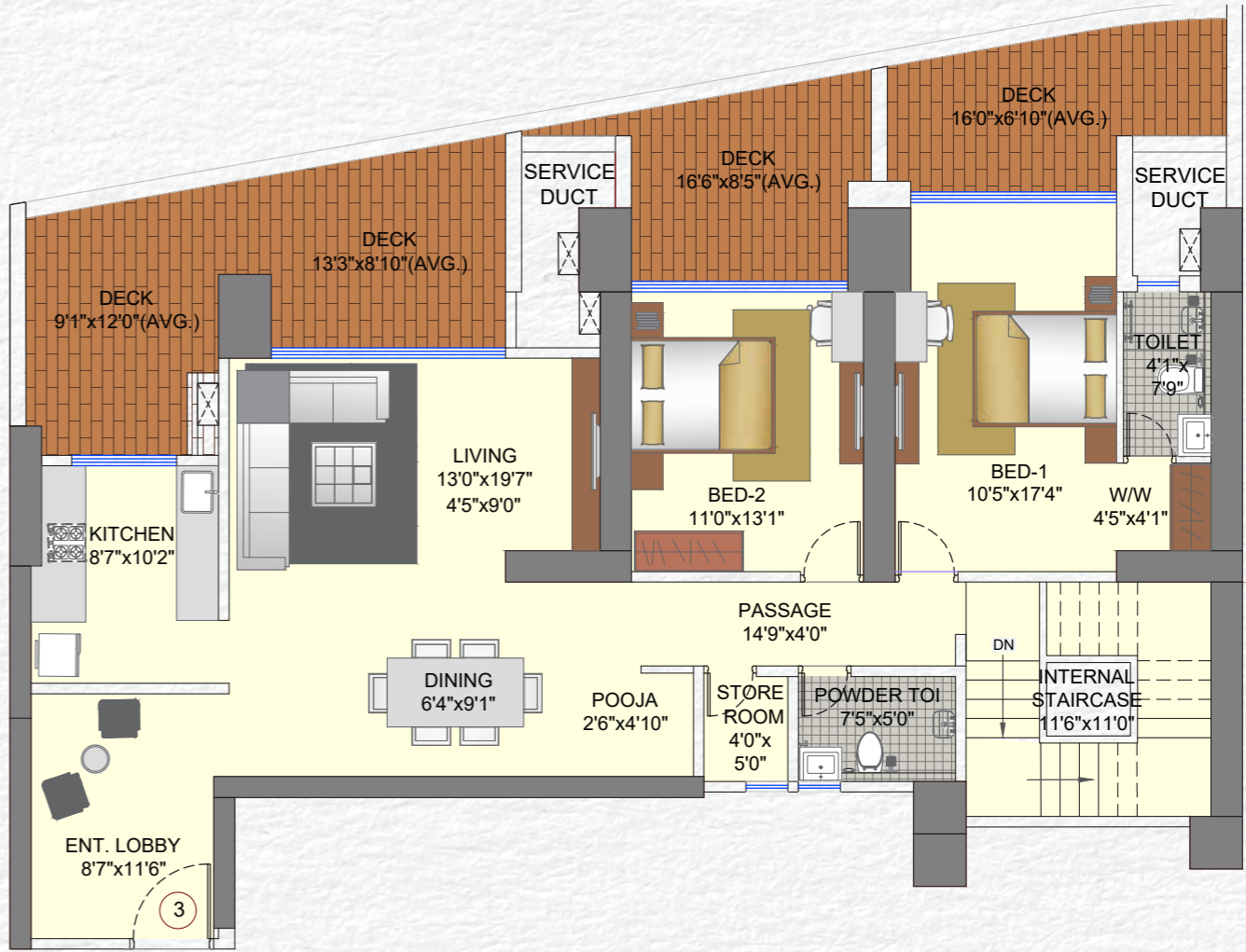
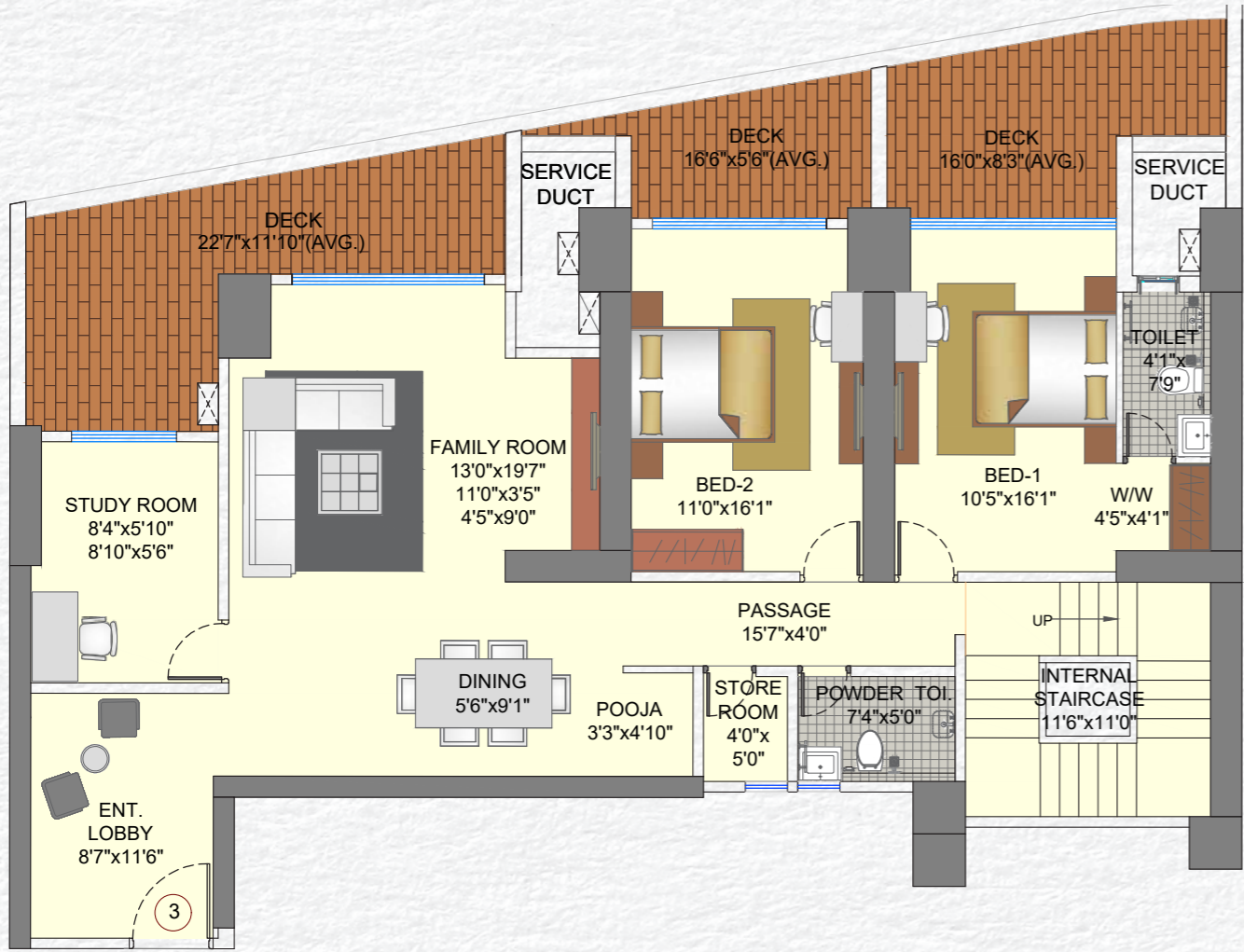
# Tower Evok (B) - 5 BHK Unit - P6-1



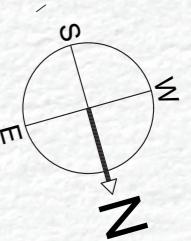
RERA CARPET	BALCONY	TOTAL
2818 sq.ft.	680 sq.ft.	3498 sq.ft.



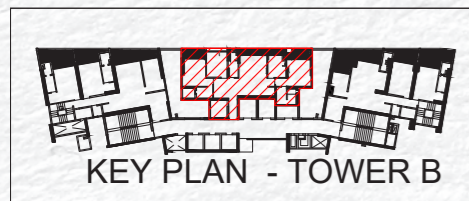
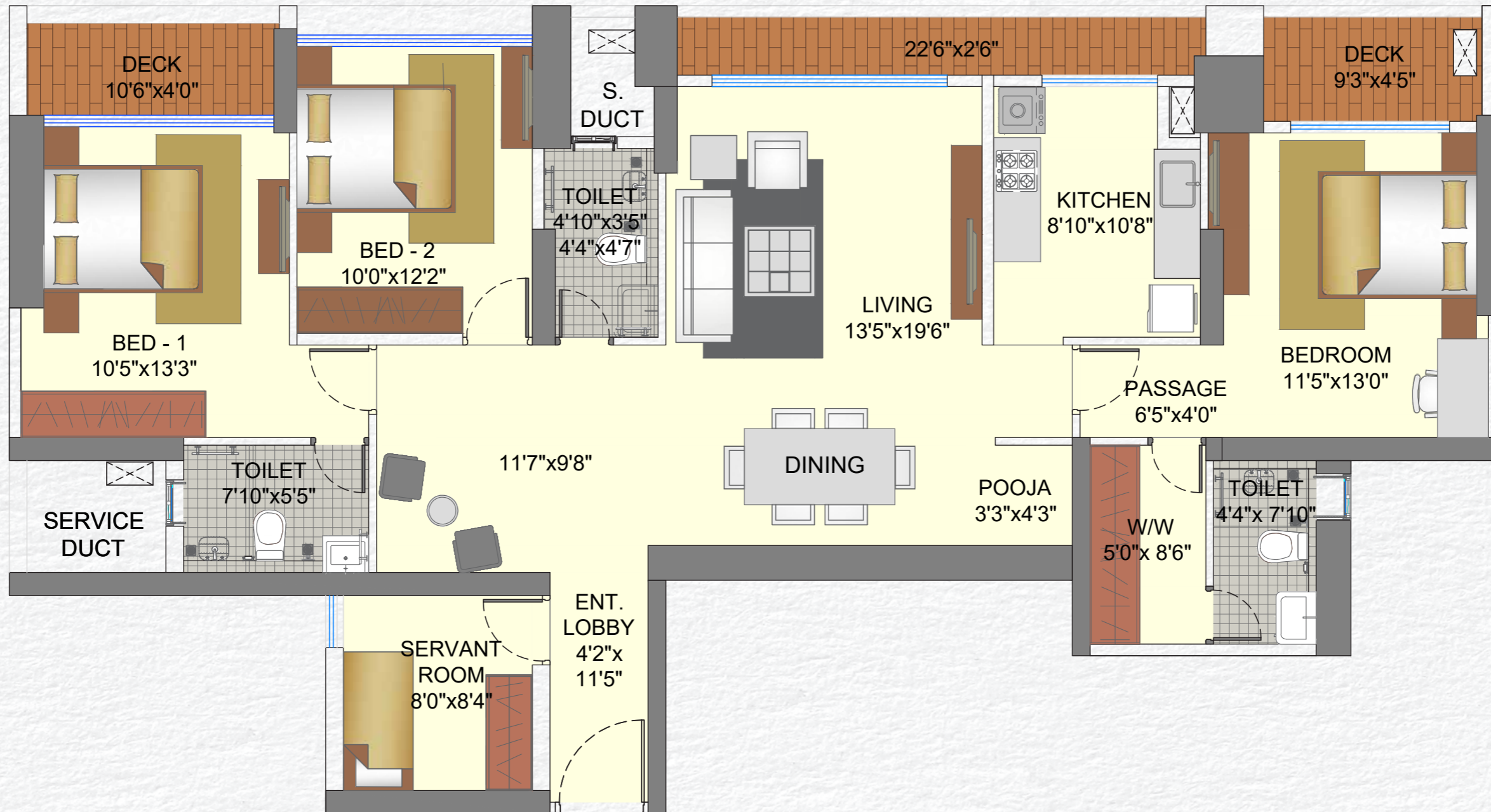
# Tower Evok (B) - 5 BHK Unit - P6-3



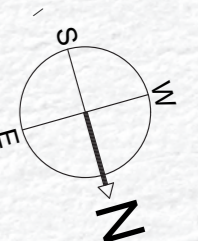
RERA CARPET	BALCONY	TOTAL
2625 sq.ft.	770 sq.ft.	3395 sq.ft.



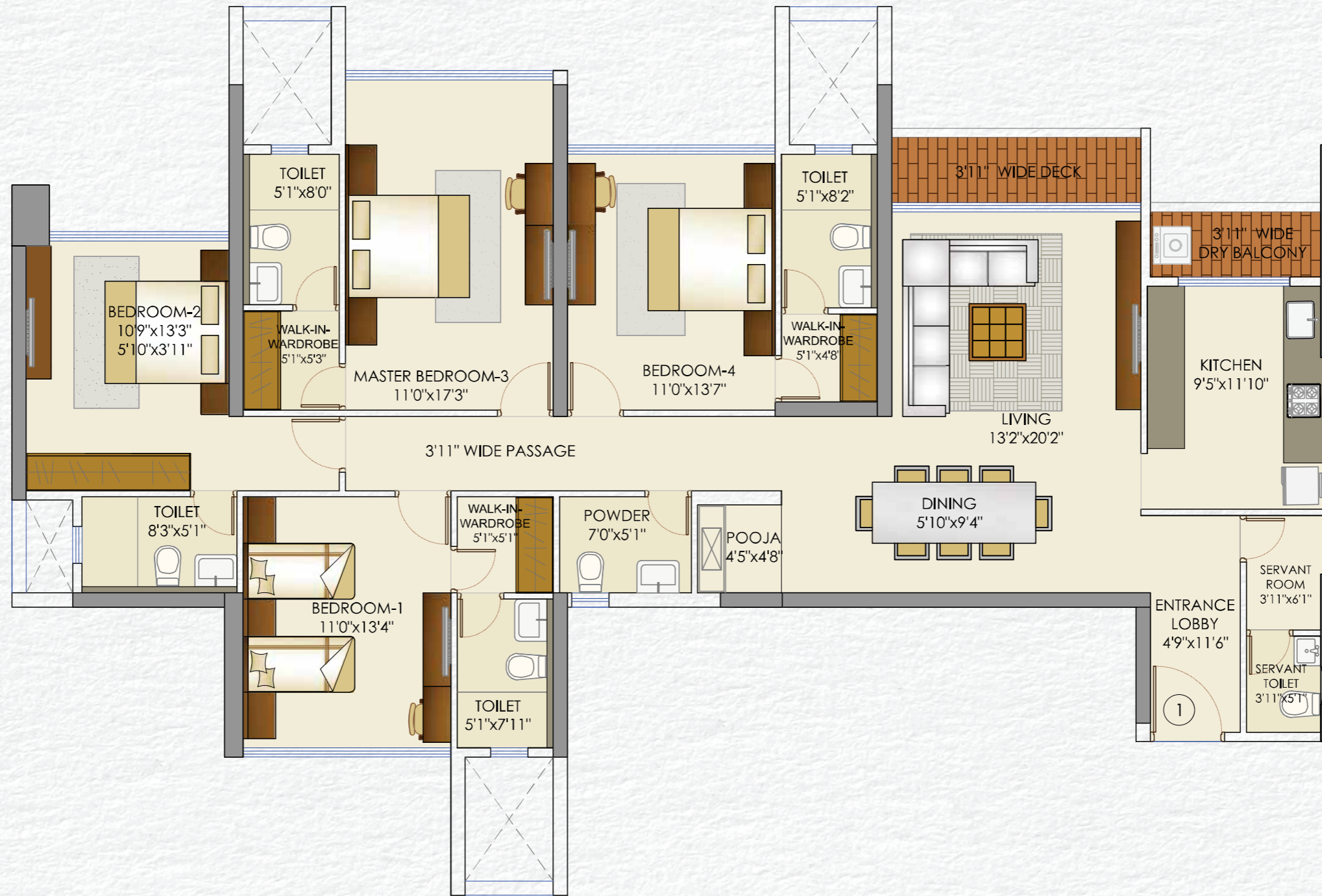
# Tower Evok (B) - 3.5 BHK Unit - P5-2



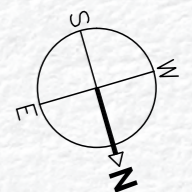
RERA CARPET	BALCONY	TOTAL
1315 sq.ft.	142 sq.ft.	1457 sq.ft.



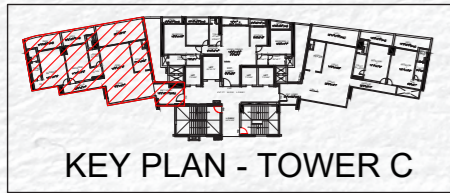
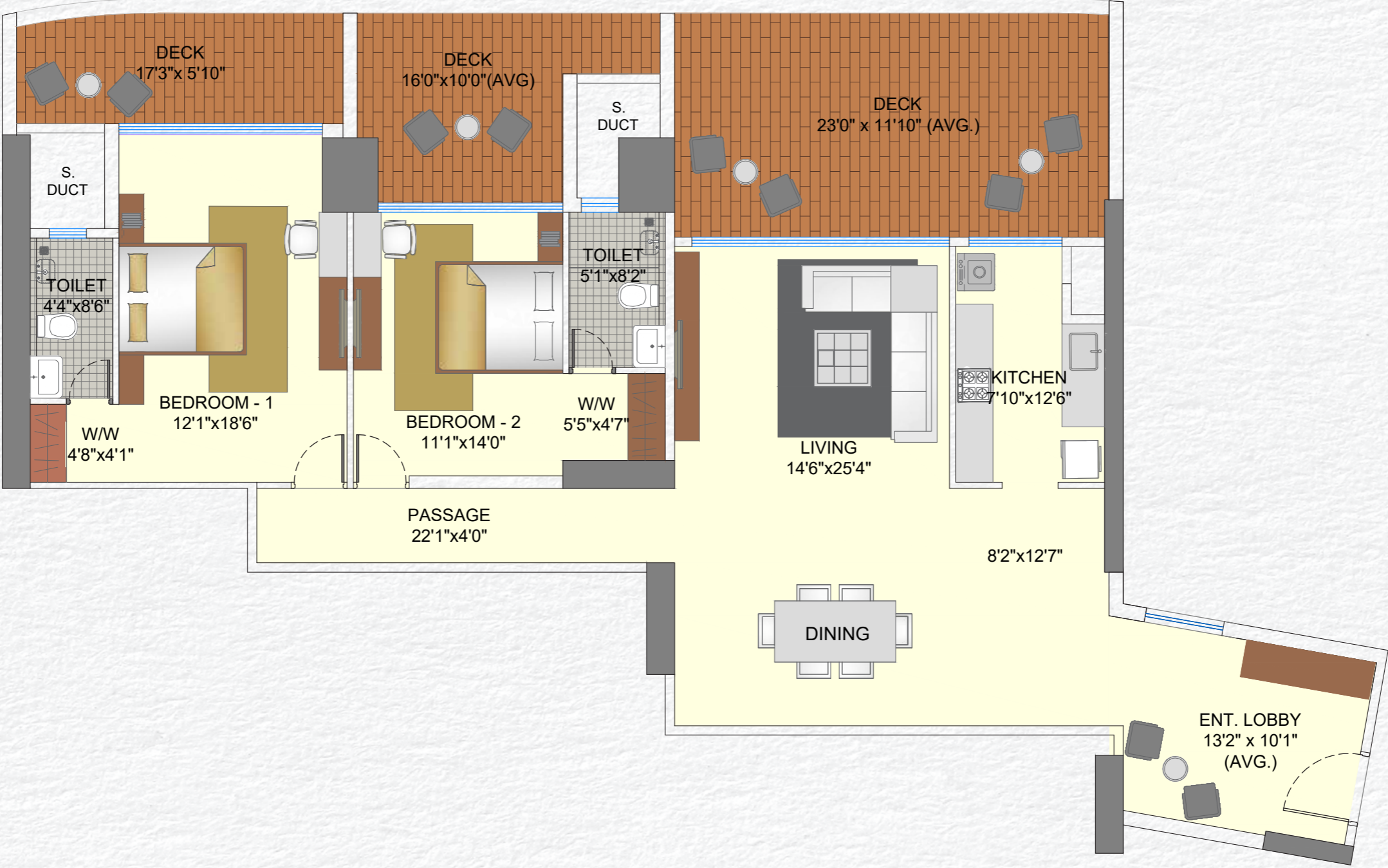
# Tower Evok (B) - 4 BHK Unit - 301



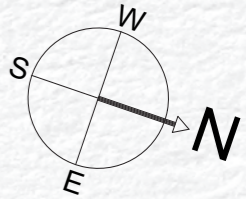
RERA CARPET	BALCONY	TOTAL
1658 sq.ft.	NA	1658 sq.ft.



# Tower Elite (C) - 2 BHK Unit - P6-1

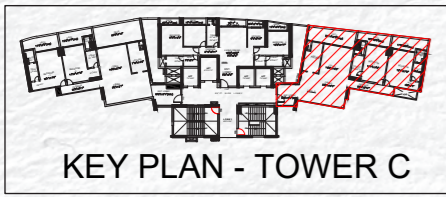
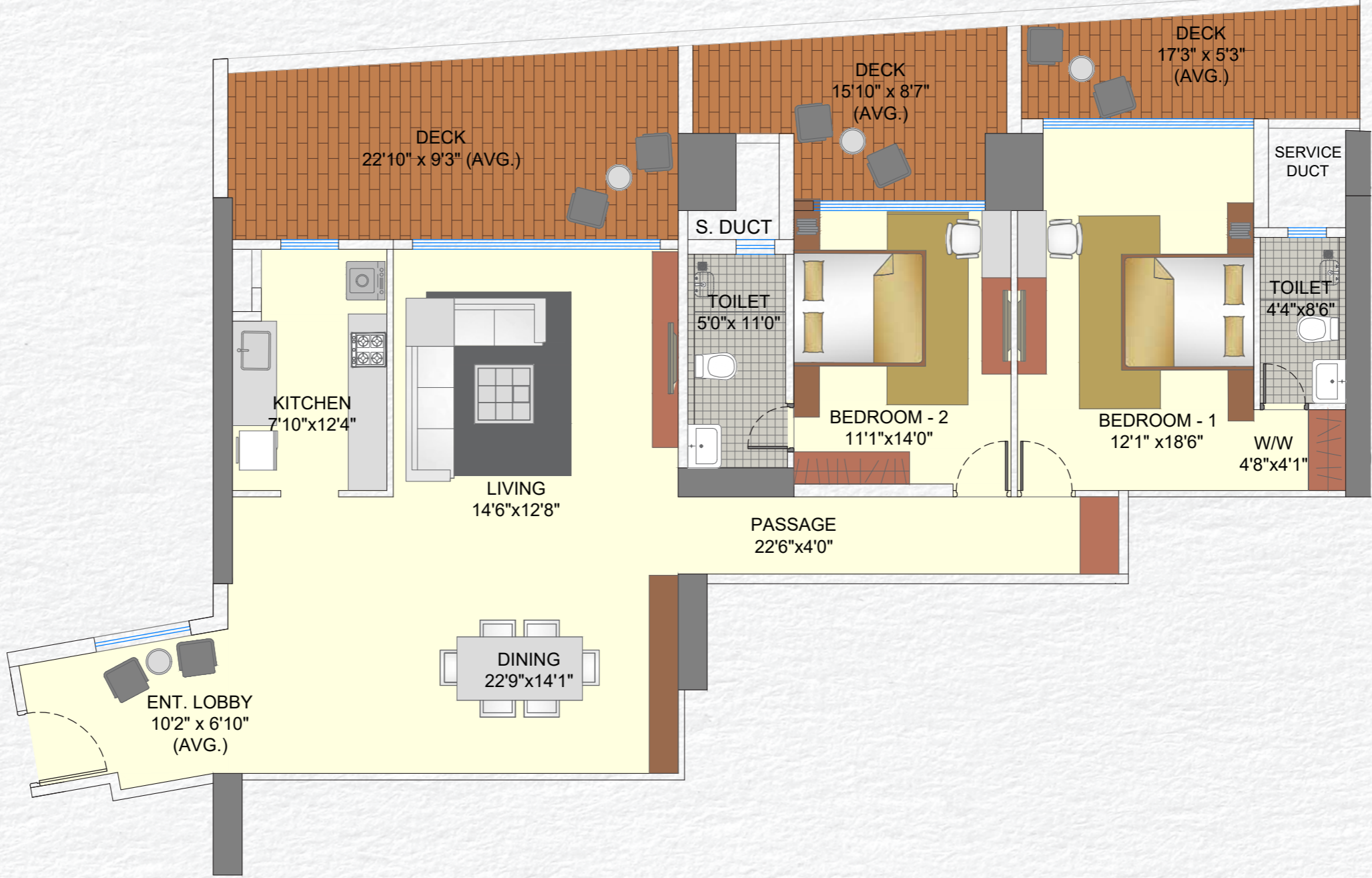


RERA CARPET	BALCONY	TOTAL
1364 sq.ft.	491 sq.ft.	1855 sq.ft.

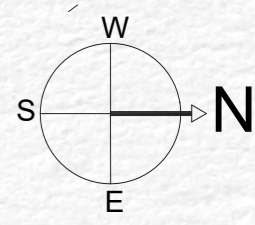




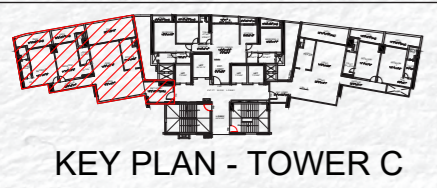
# Tower Elite (C) - 2 BHK Unit - P6-3



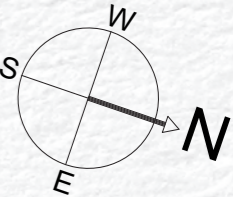
RERA CARPET	BALCONY	TOTAL
1323 sq.ft.	414 sq.ft.	1737 sq.ft.



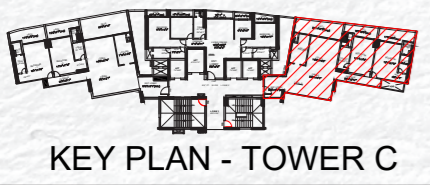
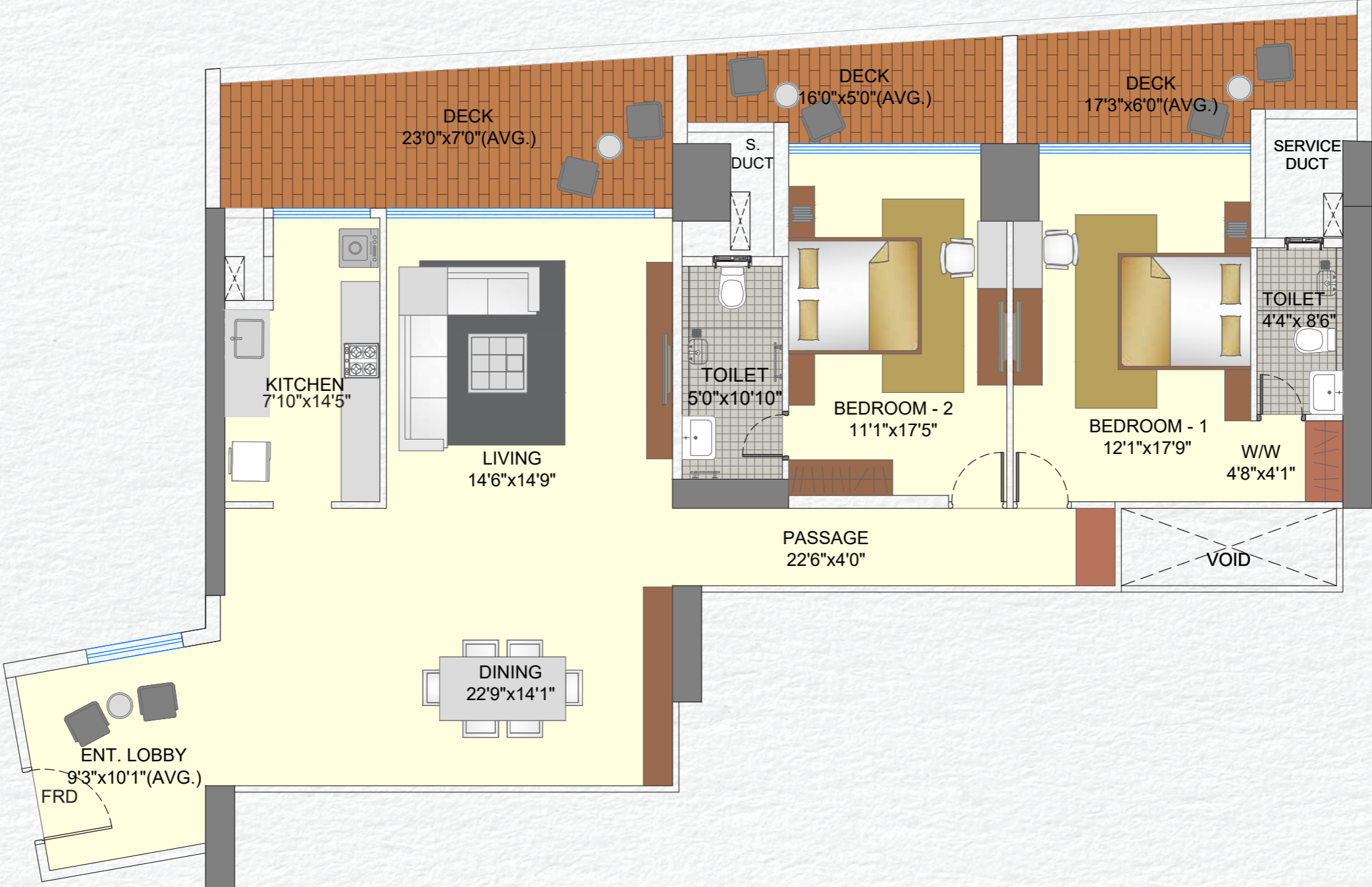
# Tower Elite (C) - 2 BHK Unit - P5-1



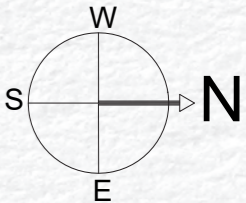
RERA CARPET	BALCONY	TOTAL
1435 sq.ft.	417 sq.ft.	1852 sq.ft.



# Tower Elite (C) - 2 BHK Unit - P5-3



RERA CARPET	BALCONY	TOTAL
1421 sq.ft.	330 sq.ft.	1751 sq.ft.





Site Address: Runwal Elegante, Behind Infiniti Mall, Lokhandwala, Andheri (W) Mumbai, Maharashtra - 400 058.

MahaRERA Registration No. P51800003620 of Elan - Tower A is available on website : <https://maharera.mahaonline.gov.in/>

The images and other details herein are only indicative. The Developer / Owner reserves the right to change any or all of these in the interest of the development, as per provision of law. Artist's impressions are used to illustrate amenities, specifications, images and other details. Tolerance of +/- 3% is possible in the unit areas on account of design and construction variances. All brands stated are subject to final decision of the project architect. This electronic / printed material does not constitute an offer and/or contract of any type between the Developer / Owner and the recipient. No booking or allotment shall be deemed to have been made on the basis of this electronic / printed material. Any Purchaser / Lessee of this development shall be governed by the terms and conditions of the agreement for sale / lease entered into between the parties, and no details mentioned in this electronic / printed material shall in any way govern such transactions unless as may be otherwise expressly provided in the agreement for sale/lease by the Developer / Owner. The Developer / Owner does not warrant or assume any liability or responsibility for the accuracy or completeness of any information contained herein. Project presently financed by Aditya Birla Finance Ltd and Aditya Birla Housing Finance Ltd. and NOC / permission of Aditya Birla Finance Ltd and Aditya Birla Housing Finance Ltd. will be obtained for sale of property, if required. This electronic / printed material has been created keeping in mind the provisions of the Real Estate (Regulation and Development) Act, 2016 (RERA) applicable for projects in Maharashtra. You are required to verify all the details, including area, amenities, services, terms of sales and payments and other relevant terms independently with the Developer sales team only, by physically visiting the project site and the authorised website of RERA. You are requested NOT to visit any unauthorized or unverified website/broker (online / offline) to receive any information about any projects of the Developer and/or its sister concerns.